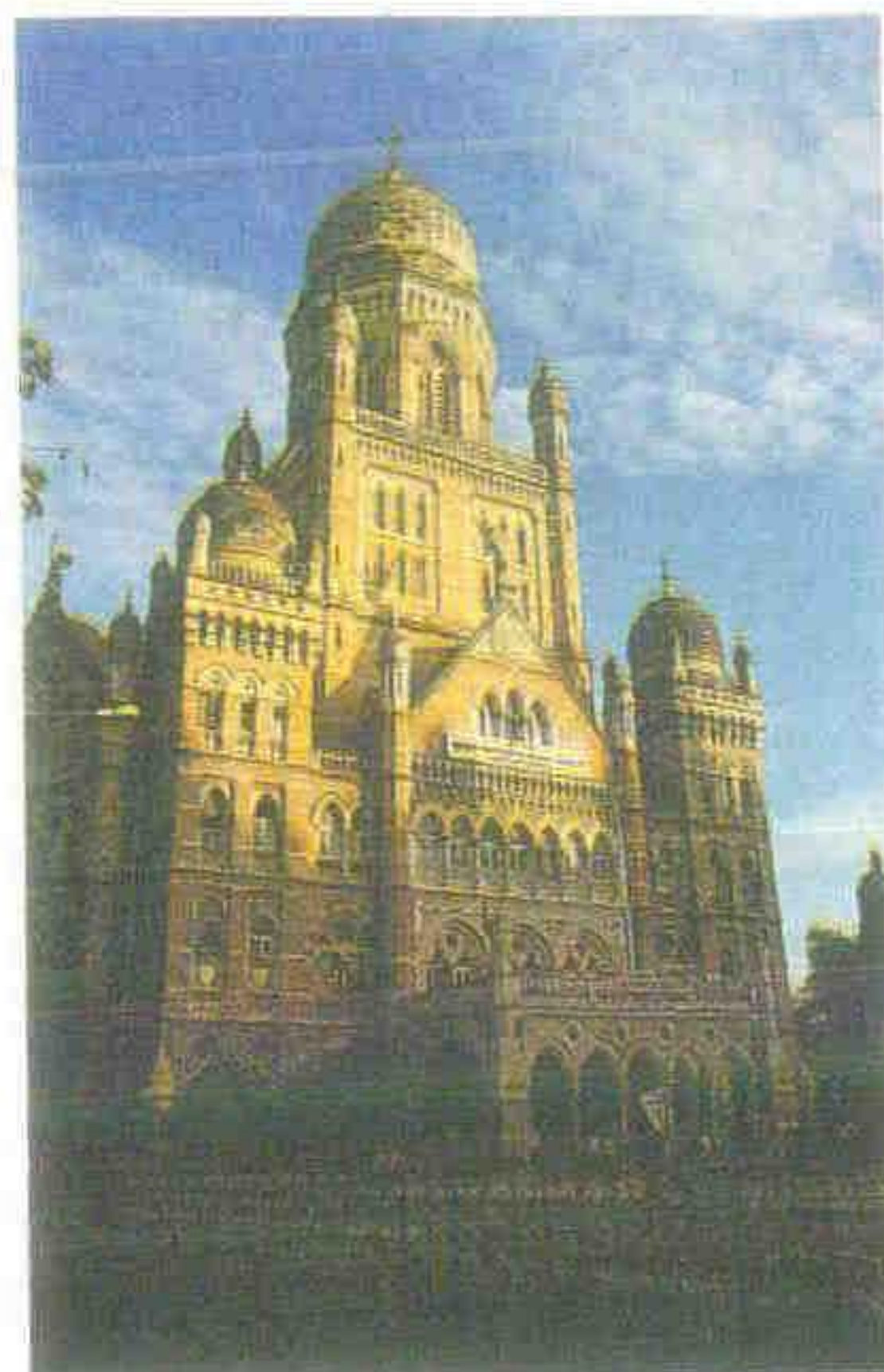




MUNICIPAL
CORPORATION OF
GREATER BOMBAY



know your ward development plan 'T' WARD



FOREWORD

The Municipal Corporation of Greater Bombay is an autonomous Body, established under the provisions of Bombay Municipal Corporation Act, 1888 to administer the civic affairs of the Bombay City. The Municipal Commissioner is the Chief Executive Head of this Body and is responsible for providing and maintaining civic services in the city.

As per the provisions of Bombay Town Planning Act, 1954, it was necessary for the Municipal Corporation to prepare a Development Plan for Greater Bombay area. Such a plan was, therefore, prepared which came into force in 1965. This Development Plan was for a period of twenty years i.e. 1961 to 1981. This Development Plan however, was not effective as it did not involve any public participation and rolled entirely on the Municipal Corporation to generate resources to meet the cost of acquisition of land, removal of encumbrances and development of the amenities. Moreover, there was no specific provisions available to raise the funds solely for the purpose of implementation of the Development Plan.

Keeping in view of the weaknesses of the First Development Plan, the Municipal Corporation has now revised the said Development Plan. The Revised Development Plan has already come into force and is effective upto year 2001. This plan involves public participation and there are such provisions in the said Development Plan and the Development Control Regulations, 1991, sanctioned alongwith the said plan that it would be possible now for the Municipal Corporation to implement the said plan with out such financial liability.

It is felt that the citizens should be made aware of the broad outline of the Development Plan and the Development Control Regulations, 1991, so that they would be able to understand and participate more effectively in the implementation of the said Development Plan.

For the sake of convenience and to make it more effective, it is proposed to prepare a booklet 'Know Your Ward Development Plan' for each municipal administrative ward and print it for the benefit of general public.

We have great pleasure to publish the booklet in this series titled 'Know Your Development Plan for 'T' Ward'. We are sure that it will help citizen to understand the basic characteristics of 'T' Ward', the amenities already existing in the Ward and the amenities proposed to be developed in the Revised sanctioned Development Plan. It is hoped that the citizens would make full use of this booklet and help the Municipal Corporation in implementing the Development Plan for betterment of this great metropolis.

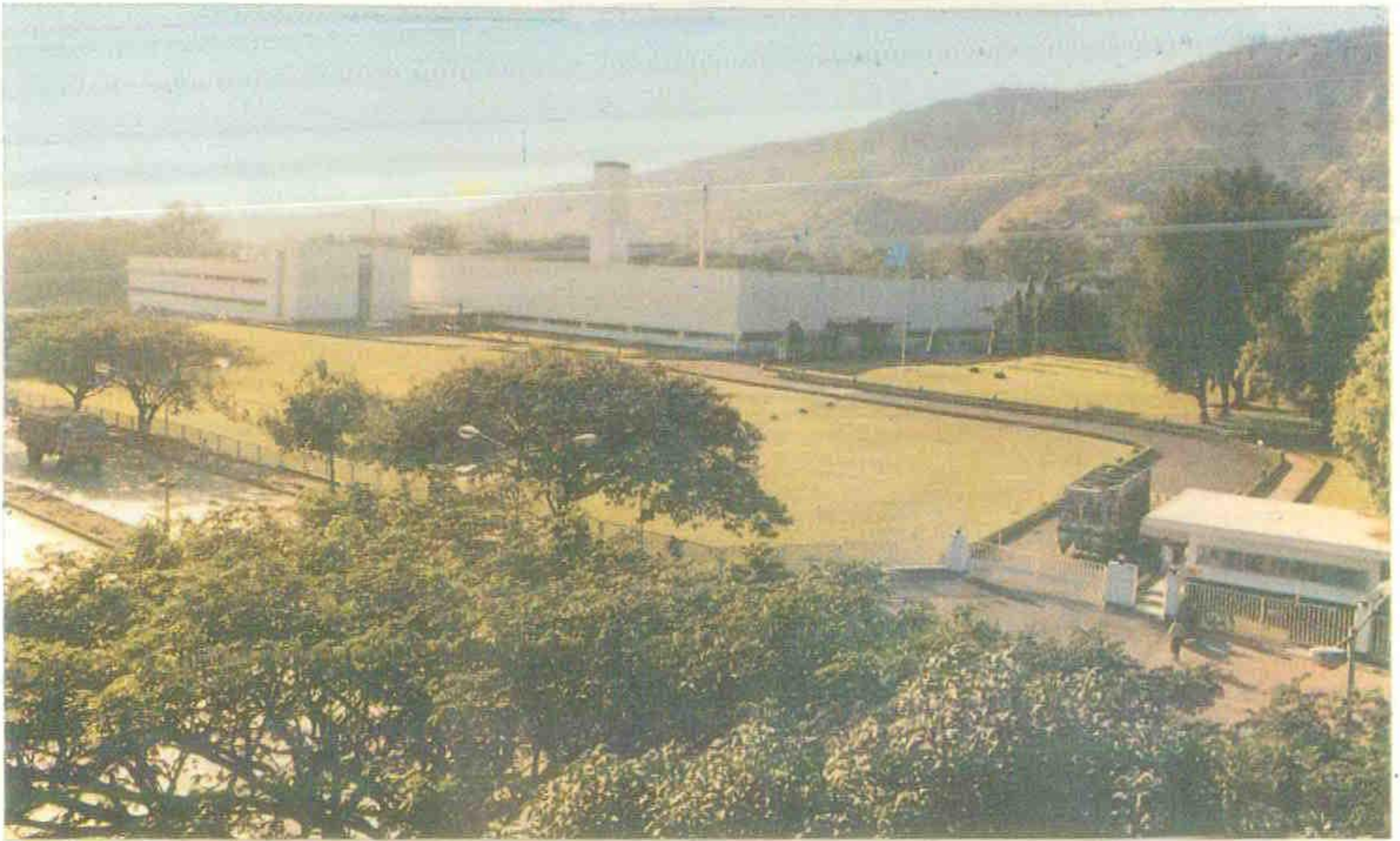
V.N. ZURALE
CH.E. (D.P.)

A.N. KALE
DIR. (E. S. & P.)

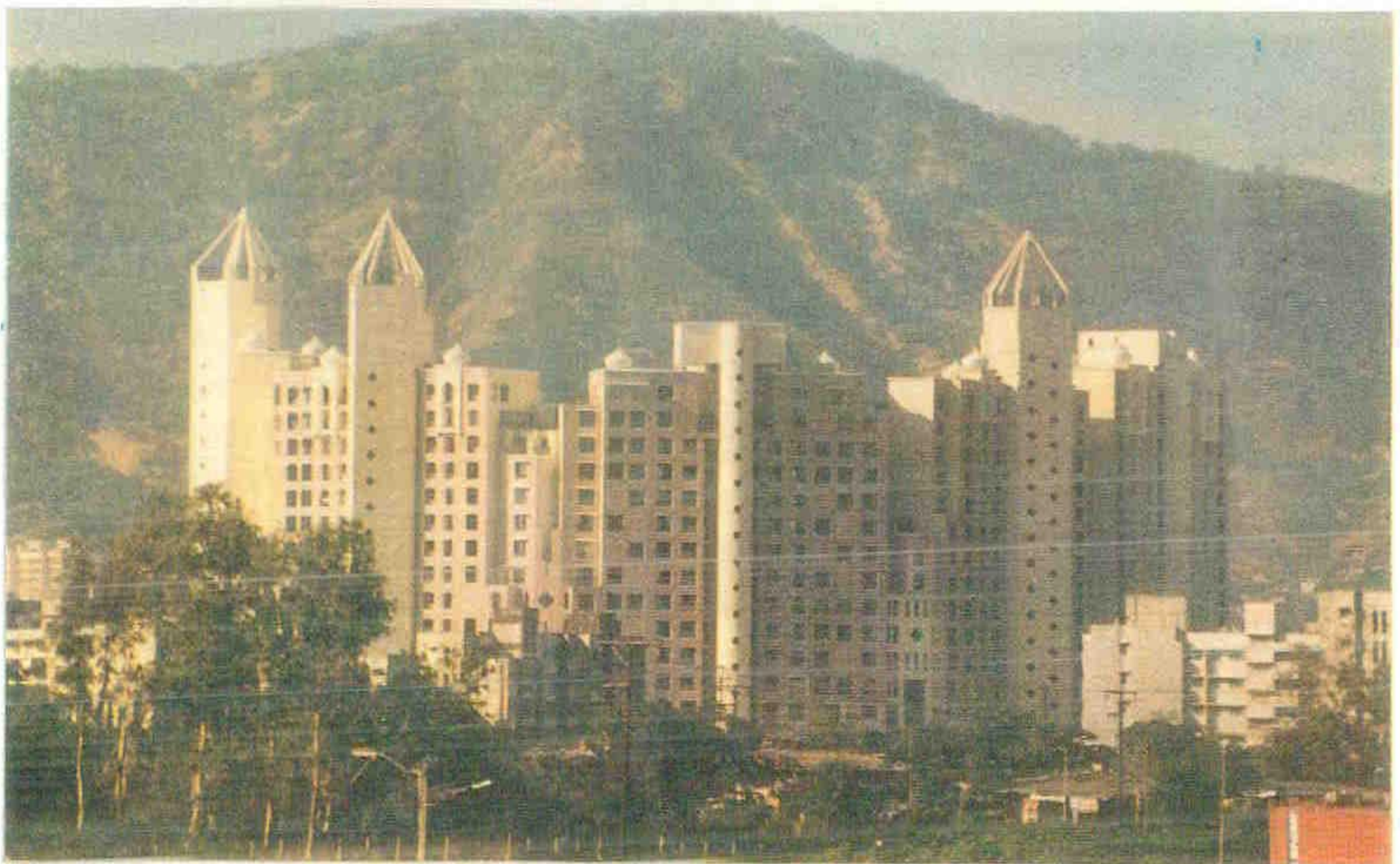
SUDHA BHAVE
ADDL. MUN. COMMISSIONER

S. G. KALE
MUNICIPAL COMMISSIONER

JOHNSON AND JOHNSON LTD. - MULUND WEST



KONARK INDRAPRASTHA - MULUND WEST



KNOW YOUR WARD

'T' WARD

DEVELOPMENT PLAN

1. BACKGROUND :

Three and half centuries ago, Bombay was a group of seven tiny islands predominantly inhabited by Kolis and the main trades were fishing, agriculture and coconut plantation etc. In 1667, these island were taken on lease by the East India Company, for the purpose of trade and commerce. They established a port, being the most suitable location and the same was constructed where the Gateway of India stands today. This started the development of Bombay City, which has now grown into metropolis.

Earlier the limit of Municipal Corporation was confined to City area only. The Suburban areas which are now comprise of L, M, N, H and K Wards were merged and brought within the jurisdiction of the Corporation in the year 1950, whereas the extended suburb areas comprising of N, T, P and R Wards were merged within the Corporation limit in the year 1957. With the passage of time with all around development of the area within the jurisdiction of the Corporation now called as Greater Bombay has grown into the Great Metropolis with the population of around 1 crore.

The City has been divided into administrative wards for the purpose of Local administration. With the passage of time larger wards were subsequently sub-divided and today are 23 administrative wards for the purpose of local administration. The 'T' ward is the north-eastern most ward of the suburbs. It measures about 45.42 sq.kms. in area. It is bounded by the Thane Creek on the east, by old Iana Pipeline, catchment area of Vihar & Powai on the west, by Goregaon-Mulund Link Road on the south and by Bombay Municipal Corporation limit on the north side. As per census of 1991, population of 'T' ward is 2,88,067.

2. CHARACTERISTICS :

The entire area of T-ward has been developed beautifully with broad roads, beautiful buildings and large open play grounds and gardens. The entire T-ward is bifurcated in two parts by Central Rly. line and known as Mulund (East) and Mulund (West). Entire Mulund (East) is developed with only residential development and the Mulund (West) area is mostly developed with residential development and certain area with industrial activities. Large pharماسitical companies like Jonson & Jonson, Burrough Well Come, Hoechst, etc are situated along Lal Bahadur Shastri

Marg, Further towards west of these companies lie the big hills creating catchment area of Tulsi Lake. Due to sea on east and hills on west, the entire T-ward is having beautiful scenery compared with other wards in suburbs.

2.1. The road network of T-ward is very nicely developed and most of the roads are crossing each other at an angle of 90°. The ward office of T-ward is situated at the junction of five such roads known as 'Pach Rasta'. Two major arterial roads namely 'Lal Bahadur Shastri Marg' on west and 'Eastern Express Highway' on east carry most of the traffic load of T-ward. Both these roads are having heavy vehicular traffic due to check posts on northern limits of wards through which heavy vehicles carrying goods pass out of Bombay limit. The entire length of L.B.S. Marg passing through T-ward is concretised giving maximum relief to vehicular traffic on this road. A new bridge over C.Rly is under construction which will help in smooth flow of traffic from Mulund west to east. Further, 'T' Ward is likely to be connected to New Bombay by way of proposed 'Airoli Bridge' over the creek.

2.2. T-ward, being northern most Limit of Greater Bombay and having most of the vacant land, the same is now developing with large township and skyscrapers buildings. Bombay Municipal Corporation has already developed one

air-conditioned Drama Theater and Sports Complex with Swimming Pool on Purshotam Kheraj Road, Mulund (W).

2.3. Two large residential layouts namely 'Devidayal Layout' in Mulund (West) and 'Gavde Venze Scheme' in the Mulund (East) are most prominently developed layouts in T-wards.

3. DEVELOPMENT PLAN - 1967

As per the provisions of the Bombay Town Planning Act 1954, the development plan of Greater Bombay was first prepared by the Municipal Corporation for the areas within their jurisdiction. The development plans of various wards were sanctioned by the Government from 1965 to 1967. Accordingly, the development plan of T-Ward was sanctioned in the year 1965. The development plan included zoning for ready residential, commercial, industrial and no development zone. It also includes reservations for various public amenities and utilities. It also included a proper net work of proposed roads.

3.1. Due to financial stringency and various other constraints, the development plan of 1967 could be implemented to a very small extent by the Municipal Corporation. As a result only very few reservations could be developed in this Ward.

4. REVISED DEVELOPMENT PLAN - 1991.

After sanctioning of the early development plan there were number of changes in policies which were taken into account while preparing the development plan. Further in the meantime, the M.R. & T.P. Act came into force replacing Bombay Town Planning Act, 1954, which also provides for appointment of a Regional Authority. The Govt., therefore, appointed Bombay Metropolitan Regional Development Authority to look after the development of various areas surrounding Bombay and also lay down policies and guidelines for development within City of Bombay.

Taking into consideration these changed and being obligatory function under the M.R. & T.P. Act, the development plan of Greater Bombay has been revised, which has been sanctioned by the Government from time to time in the recent past. The sanctioned revised Development Plan of T-ward, has come into force from 1st June, 1993.

4.1. The State Government has also sanctioned the Development Control Regulations, 1991 and the same have come into force from 25.3.1991.

4.2. The list of existing amenities and sites reserved for proposed amenities is given in Appendix I. This is a summary statement which includes the number of existing and proposed amenities and the corresponding area in Square meters. Further the entire 'T' ward is having 16.47%, 0.25%, 4.48% and 78.8% of area in Residential, Commercial, Industrial and No Development Zone respectively. Thus major portion of the ward is situated in No Development Zone.

5. IMPLEMENTATION OF REVISED DEVELOPMENT PLAN - 1991 :

The revised Development Plan, 1991 is for a period of 20 years from 1981 to 2001. Due to several difficulties, the plan could to be sanctioned only in 1993 and as such, the time available for implementation is about 7 years from now. The Municipal Corporation is the implementing authority and it will be necessary for the Municipal Corporation to prepare a phase-wise programme to develop the amenities shown in the development plan within a span of 7 years.

6. MECHANISM FOR DEVELOPMENT :

The proposed amenities can be developed in the following manner.

6.1. The Municipal Corporation can acquire the plot under the provisions of the M.R. & T.P. Act, remove the encumbrances thereon by rehabilitating the authorised occupants elsewhere and developing the amenity as per the requirement of the Local population. The Corporation has to incur the cost of acquisition, rehabilitation and development. This was the basic principle adopted for implementation of the Development Plan sanctioned in 1967. As the Municipal Corporation could not provide adequate financial resources, the amenities could not be developed to the desired extent. In order to facilitate development of various public amenities and facilities specific provisions have been made in D.C. Regulations which will speed up the development of such reserved sites for the specific purposes without incurring any expenditure by the Corporation and will minimise acquisition procedure which is costly and time consuming.

6.2. Under the Regulation No. 9, a list of public amenities has been given which can be developed by the owner and handed over to the Municipal Corporation or other Appropriate Authorities as the case may be, free of cost. The owner can then develop the plot for the permissible users in the zone, to its fullest extent (treating the amenity free of F.S.I.). Thus, the Municipal

Corporation or the Appropriate Authority will get the constructed amenity without incurring any expenditure. The said regulation also empower the Municipal Corporation to hand over the constructed amenity to any registered institution or trust for operation and maintenance. Due to this regulation, many reservations such as shopping centre, retail market, parking lot, dispensary, health/welfare centre, maternity home, municipal chowky, general hospital, library etc. will be available to Corporation for benefit of public at large.

6.3. An important provision has been made under the D.C. Regulation No. 34 for grant of "Transferable Development Rights" (TDR). Under this provision, if the owner removes the encumbrances on the plot under reservation, levels the plot under reference, puts a compound wall with a gate and hands it over to the Municipal Corporation or the State Government as the case may be, free of cost, he is entitled to get the development rights in the form of full F.S.I. of the plot handed over, to be used elsewhere. For the purpose of utilization of the transferable F.S.I., the Greater Bombay area is divided into 2 zones i.e. Receiving Zone and Non-Receiving Zone. As such, transferable F.S.I., can be used only in the receiving zone. The entire city and the area between the S.V.

Road and Western Express Highway in the Western Suburbs and area between Lal Bahadur Shastri Marg and Central Railway Main Line in the Eastern Suburbs have been placed in the non-receiving zone. The transferable F.S.I., therefore, will not be allowed to be used in these areas. This provision will enable the Municipal Corporation / State Government to take over plots free of cost, for which the benefit of D.C. Regulation No. 9, (accommodation reservation) is not available.

6.3.1. The D.C. Regulation No. 34 also allows the owner to hand over the plot as specified above alongwith the constructed amenity thereat, as per the requirements of the concerned authority. Under such circumstances, the owner is entitled to have further additional F.S.I. (Transferable) equivalent to the built-up area of the amenity constructed. This Regulation No. 34 not only provides for taking over the reserved plot free of cost but also enables the concerned authority to get the amenity constructed thereon, free of cost.

6.3.2. As far as T-ward is concerned, the same being the northeast ward of eastern suburbs, the provision of T.D.R. to be used in maximum. Further, T-ward, being developing ward, it is very likely that may of the reservation will be developed and will come in Municipal possession by way of T.D.R.

6.4. As regards sites reserved for public housing/high density housing, D.C. Regulation No. 9 allows the reservations to be developed by the owner subject to certain conditions. The most important condition being that 10% of the tenements of 180 sq.ft. carpet area to be handed over to the Municipal Corporation for accommodating the project affected people who are required to be shifted due to the development of reservation, including widening of roads etc. The owner however, is entitled to get the construction cost of each tenement plus 15% profit thereon. Public Housing reservations in the Ward could be developed by taking advantage of this provision.

7. AUTHORITIES RESPONSIBLE FOR IMPLEMENTATION :

Since the revised Development Plan is required to be implemented within a span of 7 years, it is necessary that the proper phase-wise programme is prepared taking into consideration the priorities of the Local population. It is therefore, advisable that the entire Ward is divided into suitable sectors and the priorities are fixed for development of amenities therein. Based on these sectorwise priorities, a final priority list for the entire ward can be prepared. Since the preparation of priority list is directly related to the Local needs, the W.Os/Zonal D.M.Cs should prepare

such a priority list in consultation with sectional heads in the ward and the local councillors, elected representatives and Local Community.

7.1. The Office of the Ch. Eng. (Development Plan) will prepare yearwise priority for availing T.D.R. and publish the same for the benefit of owners of the reserved plots (such publication of yearly priority list of availing T.D.R. is obligatory under the provision of D.C. Regulation No. 34).

7.2. It will also be necessary to take timely steps to develop the plots made available under the T.D.R. facility or to put to use the constructed amenity either under T.D.R. facility or under accommodation reservation. The zonal D.M.C., W.O. and the Local Councillors will have to take a lead and play a constructive role in fuller implementation of the Development Plan of the Ward thereby making available amenities and facilities to the residents of the locality.

APPENDIX - I

'T' WARD

LIST OF PROPOSED / EXISTING RESERVATIONS FOR PUBLIC PURPOSE
IN THE REVISED DEVELOPMENT PLAN — (1981-2001)

Sr. No.	Village	C.T.S. No. S. No.	Tikka No.	Revised D.P. Sheet No.	Location	Area in Sq. mt. mts.	Purpose of reservation	Existing Proposed	REMARKS
1	2	3	4	5	6	7	8	9	10
1. OPEN SPACE									
A. RECREATION GROUND									
1.	Nahur	5 (pt)	5	E-6	Mulund Colony Road	7292	Recreation Ground	Existing	Designation of R.G. changed to that of Garden and included in the list of Garden (T-47)
2.	Mulund	478 (pt), 479, 400 pt	57, 58	E-6	Johnson & Johnson compound	27030	Recreation Ground	Proposed	
3.	Mulund	197 (pt)	44, 57	E-6	Junction of Mulund colony Road and 27.40 m D.P. road	4255	Recreation Ground	Proposed	
4.	Nahur	422 (pt)	11	E-6	Within Mulund Colony Layout	3066	Recreation Ground	Proposed	
5.	Nahur	422 (pt)	6	E-6	Within Mulund Colony Layout	3399	Recreation Ground	Proposed	
6.	Mulund	370 (pt)	56	E-6	With Mulund colony layout	2600	Recreation Ground	Proposed	
7.	Mulund	106 (pt), 1 (pt), S. No. 380 (pt)	43	E-6	North of Mulund colony	9103	Recreation Ground	Proposed	

APPENDIX - I (Cont.)

'T' WARD

Sr. No.	Village	C.T.S. No. S. No.	Tikka No.	Revised D.P. Sheet No.	Location	Area in Sq. mt. mts.	Purpose of reservation	Existing Proposed	REMARKS
1	2	3	4	5	6	7	8	9	10
8.	Nahur & Mulund	568 (pt), 573 pt, 574 (pt, 576 pt) 115 pt, 1452, 1483 pt, 1480 pt, 1484 1441 pt, 1483 pt 1451 pt	26 & 27 of Nahur 96 & 97 of Mulund	E-6 E-6	Housing Goshala Road & S.L. Road	51266	Recreation Ground	Proposed	Part of reservation adm. 1546 sq. m. is deleted
9.	Nahur	755	48, 49	E-6	D.D.U Road	18578	Recreation Ground	Proposed	
10.	Nahur	550 pt, 570 pt	15, 16, 25, 26, 35	E-6	Junction of P.K. Rd. & Nahur Road	2500	Recreation Ground	Proposed	Partly deleted & included in R-zone (T-129)
11.	Nahur	554 (pt)	23	E-6	Opposite to Scovil Duncan	1886	Recreation Ground	Proposed	
12.	Nahur	710 pt, 711 pt, 712 pt, 713, 714, 722 pt, 716 pt, 724 (pt)	32, 33	E-6 & E-10	South of 18.30 m. D.P. Road & east of Raja Industrial Estate	23038	Recreation Ground	Proposed	
13.	Mulund & Nahur	1318 pt 6954	145	E-11	South of Pumping Station	11946	Recreation Ground	Proposed	
14.	Mulund	145 pt, 177, 174 pt, 176 pt, 173 pt, 178 pt, 179 pt	91, 92, 78, 79	E-7	West of Ooctroi Naka (E)	17300	Recreation Ground	Proposed	Entire reservation is deleted (T-84)

APPENDIX - I (Cont.)

'T' WARD

Sr. No.	Village	C.T.S. No. S. No.	Tikka No.	Revised D.P. Sheet No.	Location	Area in Sq. mt. mts.	Purpose of reservation	Existing Proposed	REMARKS
1	2	3	4	5	6	7	8	9	10
15.	Mulund	115 pt, & Khadi	91, 92, 78, 79	E-7	West of E.E. Highway	30473	Recreation Compound	Proposed	Party deleted & changed to BSES Sub-Station, included in Sr. No. 15 A (T-92)
16.	Mulund	18 pt	19	E-3	Ganesh Four Mill compound	7000	Recreation Ground	Proposed	
17.	Mulund	3 pt	13	E-3	Abutting Pipe Line near Police Station reservation	4000	Recreation Ground	Proposed	
18.	Mulund	624 (pt)	27	E-6	Opp. to Kelkar Cc. Balrajeshwari Road	5139	Recreation Ground	Proposed	
19.	Mulund	34 pt, 30 pt, 32 pt	33, 34	E-6	Near Cemetery reservation Mulund Colony	4205	Recreation Ground	Proposed	
20.	Mulund	32 pt.	34, 35	E-6	West of E.S.I. Hosp. touching Tansa Pipe Line	8971	Recreation Ground	Proposed	Part reservation acm. @ 9245 sq. m. changed to that of Cultural Centre & given Sr. No. 268-A (T-41)

APPENDIX - I (Cont.)

'T' WARD

Sr. No.	Village	C.T.S. No. S. No.	Tikka No.	Revised D.P. Sheet No.	Location	Area in Sq. mt. mts.	Purpose of reservation	Existing Proposed	REMARKS
1	2	3	4	5	6	7	8	9	10
21.	Nahur	569 (pt)	19	E-6	Opp. to Hoechst Res.	5760	Recreation Ground	Proposed	Part reservation is deleted party changed to B.B.D. & given site No. 337-A, remaining is retained (T-22)
22	Nahur	833 (pt)	20, 21	E-6	Between Mulund Colony Road & Tansa Pipe Line	17556	Recreation Ground	Proposed	
23.	Nahur	260 (pt)	4, 5, 10	E-6	East of Shastri Nagar & Touching Duck Line	11522	Recreation Ground	Proposed	600 sq. m. are deleted & merged in site No. 93 (T-21)
24.	Mulund	34 (pt)	34	E-6	West of Cemetery reservation	5600	Recreation Ground	Proposed	
25.	Nahur	5 (pt)	5	E-6	North west of existing Municipal School Mulund Colony	5314	Recreation Ground	Proposed	Part reservation is deleted & remaining is HDH & included in list of PH/HDH

APPENDIX - I (Cont.)

T' WARD

Sr. No.	Village	C.T.S. No. S. No.	Tikka No.	Revised D.P. Sheet No.	Location	Area in Sq. mt. mts.	Purpose of reservation	Existing Proposed	REMARKS
1	2	3	4	5	6	7	8	9	10
26.	Mulund	197 (pt)	57	E-6	Near Block No. 120 (Hindustan Chowk)	300	Recreation Ground	Proposed	
27.	Mulund	885 pt, 886	36, 46	E-6	Gabrial Compound	16720	Recreation Ground	Proposed	
28.	Nahur	549	14	E-6	Near Deep Mandir Cinema	3147	Recreation Ground	Proposed	
29.	Mulund	661 (pt)	40	E-7	A.C.C. Co. Road	6576	Recreation Ground	Proposed	
30.	Mulund	661 (pt)	50	E-7	A.C.C. Co. Road Opp. to residential bldg.	3035	Recreation Ground	Proposed	
31.	Mulund	676 pt, 677 pt, 678	62, 63	E-7	Behind City Survey Office	3735	Recreation Ground	Proposed	Partly deleted & remaining is changed to that of PH/ HDH & included in list of PH/HDH giving site No. 31-A
32.	Mulund	661 pt, 730 pt, 723 pt, 715 pt, 714 pt, 763 pt	30, 39	E-7	A.C.C. Company Road in front of Globe Auto Co.	14872	Recreation Ground	Proposed	
33.	Nahur	713 pt, 719 pt, 720 pt, 722 pt, 729, 725 pt, 715 pt,	32, 33 34	E-10	Opposite Hoechst Company	13933	Recreation Ground	Proposed	

APPENDIX - I (Cont.)

'T' WARD

Sr. No.	Village	C.T.S. No. S. No.	Tikka No.	Revised D.P. Sheet No.	Location	Area in Sq. mt. mts.	Purpose of reservation	Existing Proposed	REMARKS
1	2	3	4	5	6	7	8	9	10
34.	Nahur	550 & 570 pt	15, 16, 25, 26, 35	E-6	Jn. of P.K. Road & Nahur Road	2098	Recreation Ground	Proposed	
35.	Mulund	29, 30, 31, 32, 34 pt, 35, 36, 39 pt, 40 pt	65	E-7	Jn. of 12.20 m. D.P. roads near Mulund boundary (E)	2000	Recreation Ground	Proposed	Part reservation is deleted (T-83)
36.	Mulund	1290 pt, 1292 pt, 1294 pt	129, 130	E-11	North of proposed cemetery (East)	8698	Recreation Ground	Proposed	
37.	Mulund	1111 pt, 1112, 1113, 1114 pt, 1187, 1123 pt, 1088 pt,	119, 120, 128, 129	E-11	Touching 18.30 m. road off Mitha Nagar Road (E)	12445	Recreation Ground	Proposed	Reservation is changed to that of 2500 sq.m. for S S & 2000 for another P.G. & included in their respective lists (T-103)
38.	Mulund	891 pt	110	E-7	East of Technical Institute (E)	2108	Recreation Ground	Existing	Retain. Layout open space (T-78)
39.	Mulund	1291, 1319 pt, 1318 pt	130, 136, 139	E-11	East of Proposed Cemetery (E)	22572	Recreation Ground	Proposed	

APPENDIX - I (Cont.)

Sr. No.	Village	C.T.S. No. S. No.	Tikka No.	Revised D.P. Sheet No.	Location	Area in Sq. mt. mts.	Purpose of reservation	Existing Proposed	REMARKS
1	2	3	4	5	6	7	8	9	10
40.	Mulund	1318 pt, 1300 pt, 1313 pt	137, 138, 145, 146	E-11	East of Pumping Station (East)	30785	Recreation Ground	Proposed	Area of reservation is increased, added from site No. 182, 115 (T-94 (iv))
41.	Mulund	1318 pt	146	E-11	Between E.E. Highway & Service Road (E)	10366	Recreation Ground	Proposed	
42.	Mulund	100 pt	93, 94	E-7	East of Eastern Express Highway	7588	Recreation Ground	Proposed	
43.	Mulund	101, 102	93, 80, 99 pt	E-7	East of Eastern Express Highway Near TG Reservation	15173	Recreation Ground	Proposed	
44.	Mulund	100 pt	68, 81	E-7	East of Highway	42990	Recreation Ground	Proposed	
45.	Mulund	132 pt.	106, 105	E-7	East of E.E. Highway	15173	Recreation Ground	Proposed	
46.	Mulund	1320 pt, 1321 pt, 114, 115, 116	122, 123	E-7 E-11	East of E.E. Highway	6264	Recreation Ground	Proposed	
B. MUNICIPAL PARK									
47.	Mulund	2 pt, 26 pt	16, 17	E-3	Forest Land near Duct Line, Mulund (W)	54247	Municipal Park	Proposed	
47 A.	Mulund	1320 (p)		E-7 E-11	East of E.E. Highway	100000	Municipal Park	Proposed	

APPENDIX - I (Cont.)

'T' WARD

Sr. No.	Village	C.T.S. No. S. No.	Tikka No.	Revised D.P. Sheet No.	Location	Area in Sq. mt. mts.	Purpose of reservation	Existing Proposed	REMARKS
1	2	3	4	5	6	7	8	9	10
47 B.	Mulund	1320 (p)		E-7, E-11	East of E.E. Highway (Bombay in	400000	Municipal Park (Bombay in Bonsai)	Proposed	T-108
47 C.	Mulund	Bombay in Bansai S. No. 351	106, 115, 116, 125, 128, 126, 134, 133, 143	E-7 E-11	In no Development Zone	16 Hect.	Bombay in Borisai	Proposed	New reservation (T-109)
I.C. PLAYGROUND									
48.	Nahur	535 & 541 pt	12	E-6	Off. Lal Bahadur Shastri Marg	305	Play Ground	Existing	
49.	Mulund	1132 pt, S. No. 1000 & 216	73, 86	E-6	Sonar Bangla	49270	Play Ground	Existing	
50.	Mulund	1067 & 1068 (pt)	60	E-6	North of Municipal Office	1728	Play Ground	Existing	
51.	Mulund	661/284	63, 64	E-7	A.C.C. Co. layout	2732	Play Ground	Existing	
52.	Mulund	661/285	63, 64	E-7	A.C.C. Co. layout	800	Play Ground	Existing	
53.	Mulund	661 pt	40	E-7	North of A.C.C. Co. Building	400	Play Ground	Existing	
54.	Nahur	1434 and 1435	27	E-7	Vithalbhai Patel Rd.	1899	Play Ground	Existing	
55.	Mulund	1286 pt, 1285 (pt)	98	E-6	Dr. Ambedkar Road	2060	Play Ground	Existing	
56.	Mulund	1177 & 1177/1	74, 87	E-6	Ram Ratan Trivedi Road	1226	Play Ground	Existing	

APPENDIX - I (Cont.)

'T' WARD

Sr. No.	Village	C.T.S. No. S. No.	Tikka No.	Revised D.P. Sheet No.	Location	Area in Sq. mt. mts.	Purpose of reservation	Existing Proposed	REMARKS
1	2	3	4	5	6	7	8	9	10
57.	Mulund	1328, 1329, 1333 & 1334	98	E-6	Jawaharlal Nehru Road	1848	Play Ground	Existing	
58.	Mulund	28 (pt)	26	E-6	Abutting Tansa Pipe Line	2022	Play Ground	Proposed	
59.	Mulund	24 pt, 25 pt	25	E-6	Abutting 13.42 m. wide D.P. Road	2229	Play Ground	Proposed	
60.	Nahur	422 pt.	6, 12	E-6	Within Mulund Colony Layout	1300	Play Ground	Proposed	
61.	Mulund	1111 pt., 1112 pt,	71, 84	E-6	Near P & T Colony	4050	Play Ground	Proposed	
62.	Mulund	1111 pt, 1115 pt, 1116 pt	72, 85	E-6	Near P & T Colony	51000	Play Ground	Proposed	
63.	Mulund	901, 902, 900, 903	46	E-6	Near Sonar Bangla Near M.T. Agarwal Hospital	5341	Play Ground	Proposed	Partly deleted & partly merged in site No. 247 (T-27 (ii))
64.	Mulund	1032 & 1033	53	E-6	Off Devidayal Road North of existing Play Ground	1099	Play Ground	Proposed	Partly Changed MP & merged in site No. 159 (T-27)
65.	Mulund	840 & 755	61	E-6	D.D. Upadhaya Marg Junction with Dr. R.P. Road	4236	Play Ground	Proposed	

APPENDIX - I (Cont.)

'T' WARD

Sr. No.	Village	C.T.S. No. S. No.	Tikka No.	Revised D.P. Sheet No.	Location	Area in Sq. mt. mts.	Purpose of reservation	Existing Proposed	REMARKS
1	2	3	4	5	6	7	8	9	10
66.	Mulund	1377, 1378, 1403, 1404, 1417, 1413 pt, 1419 pt, 1423 pt	97	E-6	V.P. Road	1150 <u>3360</u> 4510	Eye Hosp. Hospital	Proposed	Changed to that of Eye Hospital & included in list of Hospital giving site Nos. 66-A, 66-B, (T-84)
67.	Mulund	1351, 1352, 1355, 1356, 1357, 1358, 1388 pt, 1354 pt, 1356 p, 1339 pt, 1486 & 1370	98, 108	E-6	Jawaharlal Nehru Road	6195	Play Ground	Proposed	
68.	Nahur	573 pt, 574 pt	27	E-6	Voshala Road	2860	Play Ground	Proposed	
69.	Nahur	554 (pt)	23	E-6	Oop. to Bhandup Strel	836	Play Ground	Proposed	
70.	Nahur	709 pt. & 710 pt	33, 34	E-6	Touching 18. 30 m. D.P. roac West of LBS Marg	1806	Play Ground	Proposed	
71.	Nahur	550/22 (551 New)	35, 36	E-10	Touching St. Plus Rd.	3715	Play Ground	Proposed	
72.	Mulund	712 pt, 713 pt, 715 pt, 716, 564 pt, 202 pt, 303 pt, 1322 pt	101, 102, 111 & 112	E-7	Junction of Navghar Road & Service Road (E)	36620	Play Ground	Proposed	Part reservation is deleted (T-96)

APPENDIX - I (Cont.)

T' WARD

Sr. No.	Village	C.T.S. No. S. No.	Tikka No.	Revised D.P. Sheet No.	Location	Area in Sq. mt. mts.	Purpose of reservation	Existing Proposed	REMARKS
1	2	3	4	5	6	7	8	9	10
72 A.	Mulund	714 (p)	101, 102, 111 & 112	E-7	Junction of Navghar Road & service Road (E)	1680	Mulund Gymkhana	Existing	Please refer Sr. No. 72 (T-96)
73.	Mulund	681, 685 686	100	E-7	G.V. Scheme (East)	1365	Play Ground	Proposed	
74.	Mulund	1061 pt, 1026 pt, 1063 pt, 1066 pt, 1068 pt	128	E-11	Touching Mithaghar Road (E)	5508	Play Ground	Proposed	Part reservation is deleted (T-105)
75.	Mulund	1101, 1102, 1099 pt, 1027 pt, 1100 pt	119	E-11	Mithaghar Road	5260	Play Ground	Proposed	Changed to that of PH & included in list of PH (T-105)
76.	Mulund	1102 pt, 1107 pt, 1110 pt, 1111 pt,	119	E-11	Off Mithaghar Road touching 18.30 m. D.P. Road	2647	Play Ground	Proposed	Deleted and included in R-zone (T-103 (i))
77.	Mulund	1318 pt,	145, 153	E-11	South of Pumping station touching 27.40 m. D.P. Road	7900	Play Ground	Proposed	
78.	Mulund	144	78, 79, 91, 92	E-7	Near Octroi Naka	5574	Play Ground	Proposed	
79.	Mulund	144	78, 79, 91, 92	E-7	Near Octroi Naka	2194	Play Ground	Proposed	
80.	Mulund	144	78, 79, 91, 92	E-7	Near Octroi Naka	2415	Play Ground	Proposed	

APPENDIX - I (Cont.)

'T' WARD

Sr. No.	Village	C.T.S. No. S. No.	Tikka No.	Revised D.P. Sheet No.	Location	Area in Sq. mt. mts.	Purpose of reservation	Existing Proposed	REMARKS
1	2	3	4	5	6	7	8	9	10
81.	Mulund	1322 pt.	91	E-7	West of 60' (18.30 m) Service Road	2786	Play Ground	Proposed	
82.	Mulund	1322 pt.	102	E-7	West of 60' (18.30 m) Service Road	2601	Play Ground	Proposed	
83.	Mulund	1322 pt.	102	E-7	West of 60' (18.30 m) Service Road	1053	Play Ground	Proposed	
84.	Mulund	10 pt. & 18 pt.	19	E-3	Near Ganesh Mill Compound	3065	Play Ground	Proposed	Entire reservation is deleted and included in (I-3) zone (T-112)
85.	Mulund	631, 632, 635 pt.	13, 14, 19, 20	E-3	Kelkar Company Compound	16729	Play Ground	Proposed	Changed to Pvt. Garden and included in list of Garden (T-110))
86.	Mulund	18 pt, 19 pt, 2 pt.	17, 18	E-3	Touching 13.40 m. DP road near power line Product (West)	3780	Play Ground	Proposed	
87.	Mulund	29 pt., 34 pt.	34	E-6	North of Cemetery reservation	2508	Play Ground	Proposed	
88.	Mulund	32 pt.	44	E-6	Off 27.40 m. wide D.P. Road	2229	Play Ground	Proposed	

APPENDIX - I (Cont.)

Sr. No.	Village	C.T.S. No. S. No.	Tikka No.	Revised D.P. Sheet No.	Location	Area in Sq. mt. mts.	Purpose of reservation	Existing Proposed	REMARKS
1	2	3	4	5	6	7	8	9	10
89.	Mulund	32 (pt)	34, 35	E-6	Touching 27.4 m. wide D.P. Road	1533	Play Ground	Proposed	
90.	Nahur	469 pt.	9, 10, 20	E-6	West of Shastri Nagar	2842	Play Ground	Proposed	
91.	Nahur	833	20	E-6	East of Hoechst Residential Bldg.	2842	Play Ground	Proposed	
92.	Nahur	460 pt., 531 pt.	11	E-6	Touching road between Shastri Nagar & LBS Marg	3344	Play Ground	Proposed	
93.	Nahur	260 pt.	4, 10	E-6	East of Shastri Nagar	3108	Play Ground	Proposed	500 sq. m. area merged from site No. 23 (T-21)
94.	Mulund	852 pt.	38	E-6	D.D. Upadhaya Marg	3344	Play Ground	Proposed	
95.	Mulund	656, 660 pt., 657 pt., 658 pt.	39	E-7	S. Naidu Road	5970	Play Ground	Proposed	
96.	Mulund	725 pt., 726 pt., 727 pt., (723)	49	E-7	Off Sarojini Naidu	4273	Play Ground	Proposed	
97.	Mulund	676 pt.	63	E-7	Topiwalla College Compound	1280	Play Ground	Proposed	
98.	Mulund	676 pt.	49	E-7	Topiwalla College Compound	1300	Play Ground	Proposed	
99.	Nahur	550 pt.	36, 37	E-10	St. Pips School, Play Ground	4480	Play Ground	Proposed	Area merged from site No. 209 (T-18)

APPENDIX - I (Cont.)

'T' WARD

Sr. No.	Village	C.T.S. No. S. No.	Tikka No.	Revised D.P. Sheet No.	Location	Area in Sq. mt. mts.	Purpose of reservation	Ex sting Proposed	REMARKS
1	2	3	4	5	6	7	8	9	10
100.	Nahur	644 pt.	46, 47	E-10	North side of Nahur Village Road	4904	Play Ground	Proposed	
101.	Nahur	760, 761, 767 pt., 690, 691, 692 pt., 693 pt., 696 pt., 697 pt., 689 pt., 688 pt.	43, 44	E-10	At the Jn. of Link Road & P.M. Road	11323	Play Ground	Proposed	Partly deleted & included in I-3 zone
102.	Nahur	667, 664, 665, 669, 671	45, 53	E-10	Abutting Link Road	11295	Play Ground	Proposed	
103.	Nahur	603 pt., 604 pt.	38, 47	E-10	Infront of Mehul Cinema	9530	Play Ground	Proposed	
104.	Nahur	159, 160, 147, 145 pt., 157, 149 pt., 155 pt.	65	E-7	Jn. of 13.40 & 18.3 m. wide D.P. roads near Mulund boundary (E)	4000	Play Ground	Proposed	
105.	Nahur	175 (pt)	91	E-7	East of Gavanpada Village	1540	Play Ground	Proposed	Part reservation is deleted (T-49)
106.	Mulund	565, 566 pt., 567 pt., 562 pt.	101	E-7	Katchwalla Compound	1411	Play Ground	Proposed	Partly deleted & partly changed to that of R.G. (T-86)
107.	Mulund	698 pt., 699 pt.	100, 110	E-7	G.V. Scheme	1440	Play Ground	Proposed	
108.	Mulund	427, 428, 429, 430, 431	77	E-7	East of Gavanpada	2951	Play Ground	Proposed	Changed to PH/HDH & included in list

APPENDIX - I (Cont.)

Sr. No.	Village	C.T.S. No. S. No.	Tikka No.	Revised D.P. Sheet No.	Location	Area in Sq. mt. mts.	Purpose of reservation	Existing Proposed	REMARKS
1	2	3	4	5	6	7	8	9	10
109.	Mulund	525	89, 100	E-7	Lokmanya Tilak Road near Rly. Stn. (E)	968	Play Ground	Proposed	of PH/HDH (T-75) Deleted (T-75 m)
110.	Mulund	839, 849, 851, 852, 853, & 354 pt.	110	E-7	Off Lokmanya Tilak Road Extension	2773	Play Ground	Proposed	Deleted (T-75)
111.	Mulund	1129 pt., 1131 pt., 1249 pt.	120, 121	E-11	South West of Navgharpada Village	104	Play Ground	Proposed	Partly deleted and part reservation is changed to that of W.C. & included in list of W.C. (T-101 (i))
112.	Mulund	1289 pt., 1126 pt.,	129, 130	E-11	South of Navghar Pada Village	1575	Play Ground	Proposed	
113.	Mulund	1289 pt., 1126 pt.,	129, 130	E-11	South of Navghar Pada Village	1575	Play Ground	Proposed	
114.	Mulund	910, 911, 912 pt.	108, 109	E-6 & E-7	West of Technical Institute	14714	Play Ground	Proposed	Changed to that of Extn. to ITI & included in list of Tech. Institute (T-64)

APPENDIX - I (Cont.)

'T' WARD

Sr. No.	Village	C.T.S. No. S. No.	Tikka No.	Revised D.P. Sheet No.	Location	Area in Sq. mt. mts.	Purpose of reservation	Existing Proposed	REMARKS
1	2	3	4	5	6	7	8	9	10
115.	Mulund	1318 pt.	145	E-11	Touching service road & east of Pumping Station	3413	Play Ground	Proposed	Deleted & merged in site No. 40 (T-98 (v))
116.	Mulund	1314 pt., 1310 pt.	145	E-11	South east of Pumping Station	1951	Play Ground	Proposed	
117.	Mulund	1318 pt.	153	E-11	South east of Pumping Station	2972	Play Ground	Proposed	
118.	Mulund	693 pt.	100	E-7	G.V. Scheme (E)	440	Play Ground (Welfare Centre)	Proposed	Changed to that of W.C. & included in list of Welfare Centre.
119.	Mulund	100 pt.	93, 94	E-7	East of E.E. Highway	3906	Play Ground	Proposed	
120.	Mulund	100 pt.	93, 94, 104, 195	E-7	East of E.E. Highway	3906	Play Ground	Proposed	
121.	Mulund	87 pt.	67, 68	E-7	East of E.E. Highway	2200	Play Ground	Proposed	Part reservation from M F to that of P.G (T-27 (iii))
122.	Mulund	1321 pt.	105	E-7	East of E.E. Highway	2200	Play Ground	Proposed	
123.	Mulund	1320 pt.	114	E-7	East of E.E. Highway	2200	Play Ground	Proposed	
124.	Mulund	1320 pt.	112	E-7	East of E.E. Highway	2200	Play Ground	Proposed	
125.	Mulund	95 pt.	80	E-7	East of E.E. Highway	3000	Play Ground	Proposed	
126.	Mulund	1320 pt.	114	E-11	East of E.E. Highway	3000	Play Ground	Proposed	
127.	Mulund	1320 pt.	112	E-11	East of E.E. Highway	3000	Play Ground	Proposed	
159 A.	Mulund	1038 (Plot No.)	59	E-6	Near Aggarawal Hosp.	1699	Play Ground	Proposed	

APPENDIX - I (Cont.)

Sr. No.	Village	C.T.S. No. S. No.	Tikka No.	Revised D.P. Sheet No.	Location	Area in Sq. mt. mts.	Purpose of reservation	Existing Proposed	REMARKS
1	2	3	4	5	6	7	8	9	10
151 A.	Mulund	575 (p)	27	E-6	Goshala Foad	450	Play Ground	Proposed	Part reservation from Extn. to S S (T-44)
165 A.	Mulund	1084 (p), 1095 (p), 1096 (p), 1097 (p), 1111 (p), 1112 (p), 1093 (p)	119	E-11	Between Mithaghar & 18.30 m. Road	3200	Play Ground	Proposed	Please refer Sr. No. 165 T-99 (i)
37 A.	Mulund	1111 (p), 1112, 1113, 1114 (p), 1087, 1123 (p), 1088 (p)	119, 120, 128, 129	E-11	Touching 18.30 m. road off Mithaghar Road (E)	2500	Play Ground	Proposed	Please refer Sr. No. 37 T-103 (iii)
37 E.	Mulund	1111 (p), 1112, 1113, 1114 (p), 1087, 1123 (p), 1088 (p)	119, 120, 128, 129	E-11	Touching 18.30 m. road off Mithaghar Road (E)	2000	Play Ground	Proposed	Please refer Sr. No. 37 T-103 (iii)
192 A.	Mulund	1069	137	E-11	Near Private Primary School	2500	Play Ground	Proposed	New reservation (T-108)
127 A.	Nahur	795 (pt) 795/3		E-10	Railway Siding	8000	Play Ground	Proposed	New Reservation
165 A.	Mulund	1100 (pt), 1102 (pt), 1197 (pt), 1096 (pt), 1084 (pt), 1112 (pt) & 1111 (pt)	119	E-11	Between Mithaghar Road & 18.30 mt. wide D.P. Road	3200	Play Ground	Proposed	Please refer Sr. No. 165 T-99 (i)

APPENDIX - I (Cont.)

'T' WARD

Sr. No.	Village	C.T.S. No. S. No.	Tikka No.	Revised D.P. Sheet No.	Location	Area in Sq. mt. mts.	Purpose of reservation	Existing Proposed	REMARKS
1	2	3	4	5	6	7	8	9	10
	I (a) GARDEN								
128.	Mulund	859, 860	61, 48	E-6	At the junction of P.N. Road and Dr. Rajendra Prasad Rd.	2461	Garden	Existing	
129.	Mulund	1057	59	E-6	Lala Devidayal Road	5202	Garden	Existing	
130.	Mulund	1290 pt., 1291 pt., 1292 pt.	87, 89	E-6	S.L. Road & Dr. Ambedkar Road	2350	Garden	Existing	
131.	Mulund	469 pt. 470, 471	89, 76	E-7	Mahatma Phule Road (E)	4956	Garden	Existing	
132.	Mulund	469 pt., 474, 475, 476, 467, 468, 479	89, 76	E-7	Mahatma Phule Road	19160	Garden	Existing	
1	Nahur	5 (p)	5	E-6	Mulund Colony Road	7292	Garden	Existing	Please refer remarks at Sr. No. 1 (T-47)
133.	Mulund	571 pt.	44, 45, 57, 58	E-6	Mulund Colony Road Opp. Johnson Compd.	2786	Garden	Proposed	
134.	Mulund	571 pt.	45	E-6	Mulund Colony Road Opp. Johnson compound	2231.75	Garden	Proposed	Partly deleted (T-26)
135.	Nahur	214 pt.	11	E-6	Within Mulund Colony layout	483	Garden	Proposed	
136.	Mulund	378 pt., 838 & 840	100, 110	E-7	Off Lokmanya Tilak Road, Extention (E)	2775	Garden	Proposed	

APPENDIX - I (Cont.)

'T' WARD

Sr. No.	Village	C.T.S. No. S. No.	Tikka No.	Revised D.P. Sheet No.	Location	Area in Sq. mt. mts.	Purpose of reservation	Existing Proposed	REMARKS
1	2	3	4	5	6	7	8	9	10
137.	Mulund	2475 pt., 590 pt.	108, 38	E-6	Jawaharlal Nehru Rd near Ambika Nagar	3098	Garden	Proposed	Changed to that of PH / HDH & included in list of PH/HDH (T-37) Sr. No. 137-A Deleted
138.	Nahur	605 pt., 606 pt., 575 pt., 607 pt.	47	E-10	North side of Nahur Village Road	7918	Garden	Proposed	
139.	Mulund	1321 pt.	93	E-7	East of E.E. Highway	10656	Garden	Proposed	
140.	Mulund	120 (p), 123 (p), 119 (p)	79	E-7	East of E.E. Highway	3000	Garden	Proposed	
141.	Mulund	123 (p), 124 (p), 127 (p)	79	E-7	East of E.E. Highway	3000	Garden	Proposed	
1 A.	Nahur	5 (p)	5	E-6	Mulund Colony	7292	Garden	Existing	From Sr. No. 1 T-47
85.	Mulund	631, 632, 635 (p)	13, 14, 19, 20	E-3	Touching 13.40 m. wide D.P. road, near Power Line Product	3780	Garden	Proposed	Please refer Sr. No. 85 T-110
2. EDUCATION A. M P & P P									
1. MUNICIPAL PRIMARY SCHOOL									
142.	Mulund	642, 643, 644 (p), 640	21	E-3 & E-6	At Checknaka & LBS Marg	2044	Municipal Primary school	Existing	
143.	Nahur	257 (p), 5 (p)	5 & 6	E-6	Mulund Colony	5550	Municipal Primary school	Existing	

APPENDIX - I (Cont.)

'T' WARD

Sr. No.	Village	C.T.S. No. S. No.	Tikka No.	Revised D.P. Sheet No.	Location	Area in Sq. mt. mts.	Purpose of reservation	Existing Proposed	REMARKS
1	2	3	4	5	6	7	8	9	10
144.	Nahur	535 (p), 541 (p)	12	E-6	Off LBS Marg near Bhandup Steel Co.	868	Municipal Primary school	Existing	
145.	Mulund	15 (pt)	56	E-6	Hanuman Pada	1000	Municipal Primary school	Existing	
146.	Mulund	1490 (p)	23, 28	E-6	DD. Upadhaya Marg	6223	Municipal Primary school	Existing	
147.	Mulund	1480 (p)	85	E-6	Abutting P.K. Road Keshavpada	500	Municipal Primary school	Existing	
148.	Mulund	1132 (p), S. No. 1000 & 216	73	E-6	P.K. Road	5922	Municipal Primary school	Existing	
149.	Mulund	*288, 1289 & *287 (p)	87, 98	E-6	S.L. Road	2787	Municipal Primary school	Existing	
150.	Mulund	*176	74, 87	E-6	R.R. Road	1783	Municipal Primary school	Existing	
151.	Mulund	575 (p)	27	E-6	Gokhale Road	4900	Primary school	Existing	Part reservation is changed to P.G. & included in P.G. list giving site No. 151 A
152.	Nahur	555 pt., 604 pt., 648 (p)	46	E-10	Extension to Jawaharlal Nehru Road	780	Primary	Existing school	
153.	Mulund	403 (p), 446 (pt), 444 (p), 347 (p)	77, 90	E-7	Gavanpada Village (E)	591	Primary school	Existing	

APPENDIX - I (Cont.)

Sr. No.	Village	C.T.S. No. S. No.	Tikka No.	Revised D.P. Sheet No.	Location	Area in Sq. mt. mts.	Purpose of reservation	Existing Proposed	REMARKS
1	2	3	4	5	6	7	8	9	10
154.	Mulund	692, 693	100	E-7	G.V. Scheme (E)	1122	Municipal Primary school	Existing	
155.	Mulund	1268	121	E-11	Navghar Pada (E)	242	Municipal Primary school	Existing	
2. EDUCATION									
(a) M P AND P P									
156.	Mulund	25 (p)	25	E-6	Touching 13.42 m. 44' D.P. Road	2229	Municipal Primary school	Proposed	
157.	Mulund	22 (p)	26	E-6	Touching Tansa Pipe Line	2012	Municipal Primary school	Proposed	
158.	Mulund	1111 pt.	71, 84	E-6	Near P & T Colony	3720	Municipal Primary school	Proposed	
159.	Mulund	1011 & 1112	59	E-6	Near Aggarwal Hosp.	2187	Municipal Primary school	Proposed	Part reservation to P.G. & given site No. 127 A T-27
160.	Mulund	831 (p)	61, 62	E-6 & E-7	Dr. Rajendra Prasad Road	3952	Municipal Primary school	Proposed	
161.	Mulund	1420 & 1422	97	E-6	Vithalbhai Patel Road	1923	Municipal Primary school	Proposed	
162.	Nahur	710 pt., 712 pt.	33	E-6 &	Touching 18.30 m. D.P. Road near West of LBS Marg	1505	Municipal Primary school	Proposed	

APPENDIX - I (Cont.)

'T' WARD

Sr. No.	Village	C.T.S. No. S. No.	Tikka No.	Revised D.P. Sheet No.	Location	Area in Sq. mt. mts.	Purpose of reservation	Existing Proposed	REMARKS
1	2	3	4	5	6	7	8	9	10
163.	Nahur	550/22, 550/23	35, 36	E-10	St. Pips Road	3900	Municipal	Proposed	
164.	Mulund	1053 pt., 1063 pt., 1067 pt., 1068 pt.	128	E-11	Mithaghar Road (E)	5248	Municipal	Proposed	
165.	Mulund	1084 pt., 1095, 1096, 1097, 1100, 1111 pt., 1112 pt., 1093 pt.	119	E-11	Between Mithaghar Road & 18.30 m. Road	2500	Municipal	Proposed	Partly changed to that of P.G. & included in list of P.G. (T-99 (i))
166.	Mulund	1314 pt., 1318 pt.	145	E-11	Abutting 27.40 m. D.P. Road	1672	Municipal	Proposed	
167.	Mulund	144 pt.	78, 79, 91, 92	E-7	On the west of Export Office (E)	1950	Municipal	Proposed	
168.	Mulund	1322 pt.	102	E-7	West of 60' (18.30 m) Service Road	2415	Municipal	Proposed	Reserved for S Δ S & included in list of S Δ S (T-90 (1))
2 (a) M P AND P P									
169.	Mulund	624	20, 27	E-3 & E-6	Balrajeshwari Road	2229	Municipal	Proposed	
170.	Mulund	29 (p)	34	E-6	Touching 13.40 m. wide road near Duck Line	2368	Municipal	Proposed	
171.	Mulund	32 (p)	34, 35	E-6	Touching D.P. Road	2090	Municipal	Proposed	

APPENDIX - I (Cont.)

T WARD

Sr. No.	Village	C.T.S. No. S. No.	Tikka No.	Revised D.P. Sheet No.	Location	Area in Sq. mt. mts.	Purpose of reservation	Existing Proposed	REMARKS
1	2	3	4	5	6	7	8	9	10
172.	Natur	833 pt.	20	E-6	Touching Mulund Colony Road	1690	Municipal Primary school	Proposed	
173.	Natur	469 pt.	10, 20	E-6	West of Shastri Nagar	1690	Municipal Primary school	Proposed	
174.	Natur	5 (p), 257 (p)	5, 6	E-6	Mulund Colony		Municipal Primary School	Proposed	Changed to PH/HDH & included in list of PH/HDH (T/48 (v))
175.	Natur	260 pt.	11, 10, 4, 5	E-6	East of Shastri Nagar	1300	Municipal Primary school	Proposed	
176.	Mulund	725 pt, 728 pt, 739 pt., 731 pt.	49	E-7	Sarojini Naidu Road	3948	Municipal Primary school	Proposed	
177.	Mulund	145 pt., 147 pt.	78	E-7	Junction of 13.40 m. D.P. Road to 18.30 m. road near Mulund boundary (□)	2017	Municipal Primary school	Proposed	
178.	Mulund	162 pt., 187, 183, 189, 190, 191 pt., 175 pt.	91	E-7	East of Gavanpada Village (E)	1813	Municipal Primary school	Proposed	
179.	Mulund	712 pt., 564 pt., 565 pt., 567 pt.	101, 111	E-7	Katchawala compound	1850	Municipal Primary school	Proposed	Deleted T-86 (ii)
180.	Mulund	1269 & 1243 pt.	121	E-11	Navghar village around existing school (E)	5320	Municipal Primary	Proposed	Part reservation is deleted & included in R-zone (T-104)

APPENDIX - I (Cont.)

'T' WARD

Sr. No.	Village	C.T.S. No. S. No.	Tikka No.	Revised D.P. Sheet No.	Location	Area in Sq. mt. mts.	Purpose of reservation	Existing Proposed	REMARKS
1	2	3	4	5	6	7	8	9	10
181.	Mulund	1289 pt., 1293 pt., 1126 pt., 1127 pt.	120, 129	E-11	South of Navghar village (E)	2265	Municipal Primary school	Proposed	
182.	Mulund	1318 pt.	138, 146	E-11	Touching Service Road (E)	1672	Municipal Primary school	Proposed	Deleted & merged in site No. 40 (T/98 (v))
183.	Mulund	100 pt.	105, 94	E-7	East of E.E. Highway	3348	Municipal Primary school	Proposed	
184.	Mulund	87 pt., 86 pt.	67, 68	E-7	East of E.E. Highway	1800	Municipal Primary school	Proposed	
185.	Mulund	1321 pt.	105	E-7	East of E.E. Highway	1800	Municipal Primary school	Proposed	
186.	Mulund	1320 pt.	113, 114	E-7	East of E.E. Highway	1800	Municipal Primary school	Proposed	
187.	Mulund	1320 pt.	112	E-11	East of E.E. Highway	1800	Municipal Primary school	Proposed	
187 A.	Nahur	795/2, 795 (3), 795/5	55, 56	E-10	Mulund Goregaon Link Road Railway Siding Mulund (E)	4000	Municipal Primary school	Proposed	New Reservation
229.	Mulund	1322 pt.	91, 102	E-7	West of Service Road (18.30 m.)	2601	Municipal Primary school	Proposed	Please refer Sr. No. 229 T-90

APPENDIX - I (Cont.)

Sr. No.	Village	C.T.S. No. S. No.	Tikka No.	Revised D.P. Sheet No.	Location	Area in Sq. mt. mts.	Purpose of reservation	Existing Proposed	REMARKS
1	2	3	4	5	6	7	8	9	10
2. EDUCATION (a) Private Primary School									
188.	Mulund	661/285	64	E-7	A.C.C. Co.	223	Private Primary school	Existing	
189.	Mulund	522 (pt)	88	E-7	Lokmanya Tilak Road (East)	968	Private Primary school	Existing	
190.	Mulund	633	109	E-7	Near Technical Institute (E)		Private Primary school	Existing	Restricted on P. No. 15 P. No. 5 is designated as Private Hosp. & included in list of Private Hosp. T/93
191.	Mulund	763 pt., 1123 pt.	120	E-11	Thakur layout (E)	395	Private Primary school	Existing	
192.	Mulund	1053 pt., 1068 pt.	137	E-11	Off Mithagar Road (East)	2636	Private Primary school	Existing	
193.	Mulund	1323	98	E-6	Ambedkar Road	801	Private Primary school	Existing	
2 (b) Secondary School									
194.	Nahur	6 pt., 5 pt.	5	E-6	Mulund Colony Road	669	Secondary school	Existing	
195.	Nahur	422 pt.	5, 11	E-6	Mulund Colony Road	600	Secondary school	Existing	

APPENDIX - I (Cont.)

'T' WARD

Sr. No.	Village	C.T.S. No. S. No.	Tikka No.	Revised D.P. Sheet No.	Location	Area in Sq. mt. mts.	Purpose of reservation	Existing Proposed	REMARKS
1	2	3	4	5	6	7	8	9	10
193.	Mulund	275 pt., 1 pt.	56	E-6	Opp. Mulund Colony Road near Hanuman Pada	8620	Secondary school	Existing	
197.	Mulund	931	47, 48	E-6	Netaji Subhash Chandra Bose Road	892	Secondary school	Existing	
198.	Mulund	933 pt., 933/2pt.	47, 48 61	E-6	N.S. Bose Road	1783	Secondary school	Existing	
199.	Mulund	846 pt.	47	E-6	Dr. R.P. Road Jn. with N.S. Bose Road	3010	Secondary school	Existing	
200.	Mulund	1068/23 to 1068/30	60	E-6	South of Police Qrt.	603	Secondary school	Existing	
201.	Mulund	1078	60	E-6	Devidayal Road	1672	Secondary school	Existing	
202.	Mulund	1436 pt.	97	E-6	Vithalbhai Patel Road	3158	Secondary school	Existing	
203.	Mulund	1440/1, 1440 pt., 1140/2, 1451 pt.	97	E-6	Vithalbhai Patel Road	3158	Secondary school	Existing	
204.	Mulund	1293	87	E-6	Ambedkar Road	2508	Secondary school	Existing	
205.	Mulund	1279 & 1280	98	E-6	Off. Jawaharlal Nehru Road	1635	Secondary school	Existing	
206.	Mulund	1330	98	E-6	Off. Jawaharlal Nehru Road	2081	Secondary school	Existing	
207.	Mulund	1331 & 1332	98	E-6	Off. Jawaharlal Nehru Road	1839	Secondary school	Existing	

APPENDIX - I (Cont.)

Sr. No.	Village	C.T.S. No. S. No.	Tikka No.	Revised D.P. Sheet No.	Location	Area in Sq. mt. mts.	Purpose of reservation	Existing Proposed	REMARKS
1	2	3	4	5	6	7	8	9	10
208.	Mulund	1313 pt.	86	E-6	Ambedkar Road	425	Secondary school	Existing	
209.	Nahur	550/25 pt., 550/29 pt.	36	E-10	Nahur Road	8663	Secondary school	Existing	Partly deleted (T-18)
210.	Nahur	550/17, 550/18, 550/19 pt., 550/21 pt., 550/22 pt.	35	E-10	St. Pius Road	14072	Secondary school	Existing	
211.	Mulund	641 pt., 642, 642/1 to 642/5	99	E-7	Gokhale Road (E)	920	Secondary school	Existing	
212.	Mulund	633 pt.	99	E-7	Sant Tukaram Road (East)	1003	Secondary school	Existing	
213.	Mulund	823 & 824, 815 (p), 825 (p)	110	E-7	Navghar Road (E)	704	Secondary school	Existing	Partly deleted & included in R-zone (T-91)
214.	Nahur	5 (p)	5	E-6	West of existing Municipal Primary school	2000	Secondary school	Proposed	Changed to that of CH / HDH included in list of PH / HDH (T/43 (vi))
215.	Mulund	560 pt., 566 pt., 1418 pt.	16, 85	E-6	Keshavpada	6190	Secondary school	Proposed	
216.	Mulund	731, 732, 733, 734, 750	49	E-7	In between S.N. Rd. & DD V. Road		Secondary school	Proposed	Deleted and included in I-3 zone
217.	Mulund	1434 pt.	97	E-6	V.P. Road	200	Extn. to Secondary school	Proposed	

APPENDIX - I (Cont.)

'T' WARD

Sr. No.	Village	C.T.S. No. S. No.	Tikka No.	Revised D.P. Sheet No.	Location	Area in Sq. mt. mts.	Purpose of reservation	Existing Proposed	REMARKS
1	2	3	4	5	6	7	8	9	10
218.	Nahur	554 (pt)	23	E-6	Abutting LBS Marg Opp. Bhandup Steel	1505	Secondary school	Proposed	
219.	Mulund	144 pt.	78, 79, 91, 92	E-7	On the west side of Export Office (E)	2389	Secondary school	Proposed	
220.	Mulund	1107 pt., 1110 pt., 1111 pt., 1112 pt.	119	E-11	Off Mithaghar Road touching to Road (E)	2360 1830	Secondary school	Proposed	
221.	Mulund	1318 pt.	153	E-11	Abutting 27.40 m. wide D.P. Road	2657	Secondary school	Proposed	
222.	Mulund	202	102	E-7	Abutting 13.42 m. wide D.P. Road, north of Gavanpada village	2670	Secondary school	Proposed	
223.	Mulund	18 (pt) & 10 (pt)	13	E-3	Near Ganesh Flour Mill compound	3511	Secondary school	Proposed	Deleted & included in I-3 zone
224.	Mulund	19 (pt)	17	E-3	Touching 13.40 m. D.P. Road near Power Line Product	2836	Secondary school	Proposed	
225.	Mulund	32 pt.	33, 34	E-6	Off. 27.40m. D.P. Road	2090	Secondary school	Proposed	
226.	Nahur	560	11	E-6	Guru Govindsingh Rd Touching road between Shastri Nagar & LBS Marg	2842	Secondary school	Proposed	

APPENDIX - I (Cont.)

'T' WARD

Sr. No.	Village	C.T.S. No. S. No.	Tikka No.	Revised D.P. Sheet No.	Location	Area in Sq. mt. mts.	Purpose of reservation	Existing Proposed	REMARKS
1	2	3	4	5	6	7	8	9	10
227.	Mulund	S. No. 266 pt., 252 pt.	27	E-6	Abutting Pipe Line near Model Town	1392	Secondary school	Proposed	Re-located & 1208.1 Baul + up area for church T-20
228.	Mulund	150 pt., 151 pt., 152 pt., 153 pt., 412 pt., & 414	65	E-7	West of 60' (18.30m.) road (E), abutting (12.20m.) 40' road on the west	1800	Secondary school	Proposed	
229.	Mulund	1322 pt.	91, 102	E-7	West of 60' (18.30) Service Road (E)	2601	Secondary school Municipal Primary school	Proposed	Changed to that of M P & included in list of M P (T/90)
230.	Mulund	535 pt., 712 (pt)	111	E-7	Katchwalla compound	1950	Secondary school (PH/HDH)	Proposed	Changed to PH/HDH included in list of PH/HDH (T/86 (ii))
231.	Mulund	854 pt., 855 (pt), & 853 pt.	110	E-7	At the junction of extention of Lokmanya Tilak Road & proposed 13.40m. road (E)	2276	Secondary school	Proposed	
232.	Mulund	1130 pt., 1131 pt.	120	E-11	South of Navghar Village (E)	2231	Secondary school	Proposed	Changed to that of Library & included in list of Library (T/101 (ii))

APPENDIX - I (Cont.)

'T' WARD

Sr. No.	Village	C.T.S. No. S. No.	Tikka No.	Revised D.P. Sheet No.	Location	Area in Sq. mt. mts.	Purpose of reservation	Existing Proposed	REMARKS
1	2	3	4	5	6	7	8	9	10
233.	Mulund	1288 pt., 1289 pt., 1292 pt., 1263 pt.	130	E-11	South of Navghar Village (E)		Secondary school	Proposed	Deleted (T/112)
234.	Mulund	1318 pt.	146	E-11	Touching Service Rd Opp. to Cinema reservation	2369	Secondary school	Proposed	Deleted & kept in R zone is changed to PH & included in list of P.H. T/98 (vi)
235.	Mulund	1313	86	E-6	Ambedkar Road	450	Secondary school	Proposed	
236.	Mulund	100 pt	94, 104	E-7	East of E.E. Highway	3348	Secondary school	Proposed	
237.	Mulund	96 pt. 95	80	E-7	East of E.E. Highway	2500	Secondary school	Proposed	
238.	Mulund	1320 pt.	114	E-7	East of E.E. Highway	2500	Secondary school	Proposed	
239.	Mulund	1320 pt.	122	E-11	East of E.E. Highway	2500	Secondary school	Proposed	
280.	Mulund	713 (pt. 714, 1322 (p)	111	E-7	Jn. of Navghar Rd. & Service Road	2700	Secondary school	Proposed	Please refer Sr. No. 280 T/E7
168.	Mulund	1322 (p)	102	E-7	West of 60' Service Road	2415	Secondary school	Proposed	Please refer Sr. No. 168 T/93

APPENDIX - I (Cont.)
'T' WARD

Sr. No.	Village	C.T.S. No. S. No.	Tikka No.	Revised D.P. Sheet No.	Location	Area in Sq. mt. mts.	Purpose of reservation	Existing Proposed	REMARKS
1	2	3	4	5	6	7	8	9	10
37 (C).	Mulund	1111 (p), 1112, 1113, 1114 (p), 1087, 1123 (p), 1086 (p)	119, 120, 128, 129	E-11	Touching 18.30m. Road, Off Mithagar Rd (E)	200	Secondary school	Proposed	Please refer Sr. No. 37 T-103 (iii)
23 A.	Mulund				Railway Siding	4000	Secondary school	Proposed	T-11
239 A.	Nahur	795/3, 795/5	55, 56	E-10	Railway Siding	9000	Secondary school	Proposed	New reservation
2. (c) Colleges & Polytechnics									
240.	Mulund	676 pt.	63, 76	E-7	Off. S.N. Road	3340	College	Existing	
241.	Nahur	667 pt., 661 pt., 663, 664 pt., 665 pt., 668 pt., 669 pt., 662 pt.	45	E-10	Junction of Jawaharlal Nehru Road & Goregaon Road	8700	College	Proposed	Retain full
242.	Mulund	1073, 1298 pt.	128, 129	E-11	Govt. layout touching 27.40m road	10911	College	Proposed	
2 (d) Technical & Others Institutional									
243.	Mulund	CTS No. 910 pt., 892 pt., 891, 894 pt., 910, 911, 912 pt.	108 & 109	E-6 E-7	Mulund (E)	36445	Technical Institute	Existing	Please refer Sr. No. 114 (T-64)
244.	Mulund	910, 633 pt.	109	E-7	Mulund (E)	13443	Technical Institute	Proposed	

APPENDIX - I (Cont.)

'T' WARD

Sr. No.	Village	C.T.S. No. S. No.	Tikka No.	Revised D.P. Sheet No.	Location	Area in Sq. mt. mts.	Purpose of reservation	Existing Proposed	REMARKS
1	2	3	4	5	6	7	8	9	10
3 (a) General & Specific Hospital									
245.	Mulund	897, 1015, 1014	46, 59	E-6	Dr. R.P. Road	10032	Municipal Hospital	Existing	
246.	Mulund	506 pt., 507 pt.	89	E-7	Mahatma Phule Rd (E)	1741	Hospital	Existing	
247	Mulund	898, 399	45, 59	E-6	Dr. Rajendra Prasad Road	8233	Extn. to Hospital	Proposed	
248.	Mulund	477, 481, 485, 483, 484, 498, 495, 503, 482	90	E-7	Mahatma Phule Road (East)	5711	Extn. to Hospital	Proposed	A portion of the reservation on CTS No. 494 is deleted & placed in R-zone (T/91)
3 (a) General Hospitals & Specific Hospitals									
249.	Mulund	619 pt, 619, 610 pt., 616 pt., 617 pt.	35, 36, 45, & 46	E-6	Lal Bahadur Shastri Marg	59065	ESIC Hosp.	Existing	
250.	Mulund	1299, 1299/1, 1299/2	87	E-6	Ambedkar Road, G.V. Road	446	Pragati Hospital	Existing	
66 A.	Mulund	1417 & 1418 (pt)	97	E-6	V. P. Road	1150	Eye Hosp.	Proposed	From Sr. No. 66 (T/34)
66 B.	Mulund	1377, 1378, 1403, 1404, 1419, 1423, & 1418	97	E-6	V. P. Road	3360	Hospital	Proposed	From Sr. No. 66 (T/34)

APPENDIX - I (Cont.)

'T' WARD

Sr. No.	Village	C.T.S. No. S. No.	Tikka No.	Revised D.P. Sheet No.	Location	Area in Sq. mt. mis.	Purpose of reservation	Existing Proposed	REMARKS
1	2	3	4	5	6	7	8	9	10
190 A.	Mulund	Plot No. 5	109	E-7	Near Tech. Institute	Area to be work out	Pvt. Hospital	Existing	Please refer Sr. No. 190 (T-93)
3 (b) Maternity Home & Dispensary									
251.	Mulund	1135 & 1136	74	E-6	Mahatma Gandhi Rd.	3121	Maternity Home	Existing	
252.	Mulund	23	35	E-6	Touching Pipe Line	3200	Maternity Home & Dispensary	Proposed	
253.	Mulund	1320	113	E-7	East of E.E. Highway	3000	Maternity Home & Dispensary		
3 (c) Dispensary									
254.	Nahur	422 pt.	5	E-6	Mulund Colony	669	Dispensary	Existing	
255.	Mulund	1318	145	E-11	South of Pumping Station (E)	2972	Dispensary	Proposed	
256.	Mulund	1490 pt.	38	E-6	D.D. Upadhaya Marg	557	Dispensary	Proposed	
257.	Mulund	1402 pt., 1449 & 1483 pt.	107	E-6	Jn. of Kasturba Road & Nehru Road	650	Dispensary	Proposed	
258.	Mulund	1206	73	E-6	Jn. of Bhicraj & PK Road	700	Dispensary	Proposed	
259.	Mulund	1292 pt., 1294 pt.	129	E-11	North of Proposed Cemetery (E)	1000	Dispensary	Proposed	
260.	Mulund	100 pt.	93	E-7	East of E.E. Highway	668	Dispensary	Proposed	

APPENDIX - I (Cont.)

'T' WARD

Sr. No.	Village	C.T.S. No. S. No.	Tikka No.	Revised D.P. Sheet No.	Location	Area in Sq. mt. mts.	Purpose of reservation	Existing Proposed	REMARKS
1	2	3	4	5	6	7	8	9	10
4. MARKET									
Municipal Retail Market & Housing									
261.	Mulund	1180	75, 87, 88	E-6	M.G. Road	1560	Market & Housing	Existing	Changed to R.M. T-53
262.	Mulund	1154	75, 87, 88	E-7	M.G. Road	1447	Open Market	Existing	Open Market with existing Residential use of full permissible F.S.I. on upper floors T-65
263.	Mulund	1145 (pt), 1146 (pt)	75, 87, 88	E-7	M.G. Road	850	Municipal Market	Existing	Retained T-67
264.	Mulund	619	88	E-7	Gopal Krishna Gokhale Road (E)	465	Existing Municipal Market	Existing	Retained T-66
265.	Mulund	34 (pt)	34	E-6	Abutting 27.40 m. D.P. Road	3344	Market & Housing	Proposed	Changed to R.M. T-54
266.	Nahur	5 (pt)	5	E-6	West of existing Municipal Primary School	1922	Market & Housing	Proposed	Deleted & included in R-Zone
267.	Mulund	1109 (pt)	71	E-6	Devidayal Road	2687	Market & Housing	Proposed	Changed to R.M. T-43
268.	Nahur	550 pt., 598 pt., New 551 pt.	37	E-10	Jawaharlal Nehru Road	3567	R. M.	Proposed	Changed to Retail Market T-12

APPENDIX - I (Cont.)

'T' WARD

Sr. No.	Village	C.T.S. No. S. No.	Tikka No.	Revised D.P. Sheet No.	Location	Area in Sq. mt. mts.	Purpose of reservation	Existing Proposed	REMARKS
1	2	3	4	5	6	7	8	9	10
269.	Mulund	204 & 205 pt.	101, 102,	E-7	Abutting existing Cemetery near Gavanpada (E)	2600	R. M.	Proposed	Changed to R.M. T-71
270.	Mulund	619 pt., 320 (pt) 620/4 to 620/7, 621, 622	99	E-7	Near existing market at Mulund (E)	833	F. M.	Proposed	Changed to R.M. T-68
271.	Mulund	861, 863, 864, 865, 869 (pt), 1120 (pt), 1121 (pt)	120	E-11	Junction of Sant Tukaram Road & proposed 13.40 mt. D.P. Road (E)	3706	R. M.	Proposed	Changed to R.M. T-69
272.	Mulund	1300 (pt), 1313 (pt)	137, 145	E-11	East of Pumping Station (E)	2819	R. M.	Proposed	Changed P.H. & included in use of PH T-98 (VI)
273.	Mulund	1320 (pt)	113, 103	E-7	East of Eastern Express Highway	3000	R. M.	Proposed	Changed to R.M. T-70
370.	Mulund	1143/1 to 40	74, 87	E-6	Mahatma Gandhi Rd.	1709	R. M.	Proposed	Please refer Sr. No. 370 T-63
273 A.	Nahur	795/5	56, 55	E-10	Railway Siding Mulund Goregaon Link Road Mulund (E)	2000	Retail Market	Proposed	

APPENDIX - I (Cont.)

'T' WARD

Sr. No.	Village	C.T.S. No. S. No.	Tikka No.	Revised D.P. Sheet No.	Location	Area in Sq. mt. mts.	Purpose of reservation	Existing Proposed	REMARKS
1	2	3	4	5	6	7	8	9	10
5. LIBRARY									
274.	Mulund	839	61	E-6	Junction of Dr. Rajendra Prasad Road & P.K. Road	502	Library	Proposed	
282.	Mulund	1130 (pt), 1131 (pt)	120	E-11	South of Navghar Village	2231	Library	Proposed	Please refer to Sr. No. 232 T-101 ii)
6. WELFARE CENTRE									
275.	Mulund	631/286, 631/288	64	E-7	A.C.C. Co.	250	Welfare Centre	Existing	
276.	Mulund	436 (pt)	77	E-7	Near Govanpada Village	2102	Welfare Centre	Existing	
277.	Mulund	34 (pt)	34	E-6	Abutting 27.40 mt. D.P. Road	2090	Welfare Centre	Proposed	
278.	Mulund	478	57	E-6	Near Johnson & Johnson Compound	1206	Welfare Centre	Proposed	
279.	Mulund & Nahur	1115 (pt), 568 (pt)	96 of Mulund 15 of Nahur	E-6	Keshavpada	6380	Welfare Centre	Proposed	
280.	Mulund	714, 1322 (pt), 713 (pt)	111	E-7	Junction of Javghar Road & Service Road (E)	2700	Welfare Centre	Proposed	Changed to that of S S & included in list of S A S

APPENDIX - I (Cont.)

'T' WARD

Sr. No.	Village	C.T.S. No. S. No.	Tikka No.	Revised D.P. Sheet No.	Location	Area in Sq. mt. mts.	Purpose of reservation	Existing Proposed	REMARKS
1	2	3	4	5	6	7	8	9	10
281.	Mulund	1020, 1026, 1051 (pt)	119	E-10 E-11	Mithaghar Road (East)	4180	Welfare Centre	Proposed	
282.	Nahur	465 (pt)	20	E-6	East of Hoechest Co.	500	Welfare Centre	Proposed	Partly deleted T-23
283.	Mulund	676 (pt)	63, 76	E-7	Topiwalla College Compound (E)	1010	Welfare Centre	Proposed	
284.	Nahur	603 pt., 597 pt.	37, 38	E-10	Behind Mehul Cinema	1328	Welfare Centre	Proposed	
285.	Mulund	45 (pt), 46 (pt)	65	E-7	On the junction of 12.50m. & 13.30m. Roads near Mulund bounary (E)	1543	Welfare Centre & Dispensary	Proposed	
286.	Mulund	100 (pt)	93 (p)	E-7	East of E.E. Highway	836	Welfare Centre	Proposed	
118.	Mulund	690 (p)	100	E-7	G.V. Scheme	440	Welfare Centre	Proposed	Please refer Sr. No. 118 (T-80)
111.	Mulund	1129 (p), 1131 (p), 1143 (p)	120, 121	E-11	South west of Navgharpada Village	104	Welfare Centre	Proposed	Please refer Sr. No. 111 T-101 (i)
286 A.	Mulund	795 (pt)		E-10	Railway Siding	1000	Welfare Centre	Proposed	New reservation T-11

APPENDIX - I (Cont.)

'T' WARD

Sr. No.	Village	C.T.S. No. S. No.	Tikka No.	Revised D.P. Sheet No.	Location	Area in Sq. mt. mts.	Purpose of reservation	Existing Proposed	REMARKS
1	2	3	4	5	6	7	8	9	10
CULTURAL CENTRE									
20 A.	Mulund	32 (p)	34, 35	E-6	West of ESI Hosp. touching Tansa Pipe Line	9240	Cultural	Proposed	Please refer remarks & Sr. No. 20 (T-41)
102 A.	Nahur	683 (pt)	44	E-10	Near junction of Goregaon Mulund Link Road & 18.30m wide D.P. Road	1750	Community Hall & Health Centre	Proposed	New reservation
7. FIRE BRIGADES									
287	Mulund	1109 (pt), 1110 (pt)	101, 102, 90, 91	E-6	Devidayal Road	8707	Fire Brigade	Existing	
188.	Mulund	1322 (pt)	102	E-7	Junction of D.P. roads & west of E.E. Highway	5526	Fire Brigade & Staff Quarters	Proposed	
8. CEMETERIES & CREMATION GROUND									
289.	Mulund	842 (pt)	48, 61	E-6	Dr. R.P. Road	4362	Cemetery	Existing	
290.	Mulund	741 & 742 (pt)	39	E-7	Behind Globe Auto Sarojini Naidu Road	4148	Burial Ground	Existing	Area to be corrected as per site conditions (T-40 (ii))
291.	Mulund	492 (pt), 563 (pt)	101, 102	E-7	South of Gavanpada Village (E)	2292	Cemetery	Existing	

APPENDIX - I (Cont.)

T WARD

Sr. No.	Village	C.T.S. No. S. No.	Tikka No.	Revised D.P. Sheet No.	Location	Area in Sq. mt. mts.	Purpose of reservation	Existing Proposed	REMARKS
1	2	3	4	5	6	7	8	9	10
292.	Mulund	122 & 125 (pt)	99, 80	E-7	Near Octroi Office east of E. E. Highway (E)	1756	Cemetery	Existing	
293.	Mulund	39 (p), & 32 (p)	33, 34	E-6	Touching Duck Line	11147	Cemetery	Proposed	
294.	Mulund	842 (p), 844 (p), 852 (p)	48, 61	E-7	Dr. Rajendra Prasad Road	1000	Extn. to Cemetery	Proposed	
295.	Mulund	1291 (p), 1319 (p)	129, 138	E-11	Abutting Service road near pumping station	40280	Cemetery	Proposed	
296.	Mulund	563 (p)	101	E-7	Touching existing cemetery (E)	322	Cemetery	Proposed	
297.	Mulund	121 (p), 120 (p), 123 (p), 124 (p), 127 (p), 126 (p), 125 (p), 1118 (p), 122 (p), 119 (p)	79	E-7	East of E.E. Highway south of Octroi Naka	3800	Cemetery	Proposed	
298.	9. (a.) Municipal Housing Mulund	1111 (pt)	71, 72 84, 85	E-6	North of P&T Colony	40685	Municipal Housing (PH/HDH)	Proposed	Changed to PH/HDH & included in list of PH/HDH

APPENDIX - I (Cont.)
'T' WARD

Sr. No.	Village	C.T.S. No. S. No.	Tikka No.	Revised D.P. Sheet No.	Location	Area in Sq. mt. mts.	Purpose of reservation	Existing Proposed	REMARKS
1	2	3	4	5	6	7	8	9	10
299.	Mulund	861 (p), 1114 (p), 1115 (p), 1120 (p), 1121 (p), 1123 (p)	120	E-11	Abutting proposed extension to Sant Ramdas Road	2893	Municipal Housing (PH/HDH)	Proposed	Changed to that of PH / HDH & included in list of PH/HDH (T-100)
300.	Mulund	907 & 908 (p)	46, 47	E-6	Dr. Rajendra Prasad Road	3120	Municipal Housing	Proposed	DELETED (T-43)
301.	Mulund	665, 667, 669, 670	79, 100	E-7	Touching Lokmanya Tilak Road & Gokhale Road	11432	Municipal Housing (FH/HDH)	Proposed	The reservation changed to PH/HDH & included in PH/HDH list (T-94)
302.	Mulund	100 p., 1321 (p)	80, 81, 93, 94, 104, 105	E-7	East of E.E. Highway (E)	182530	Municipal Housing	Proposed	Pleaser refer Corrigendum
303.	9. (b.) Housing for Dishoused Nahur	469 (p)	19, 29	E-6	Touching Goregaon Mulund Link Road & Mulund colony Road (W)	14880	Housing for Dishoused	Proposed	
304.	Mulund	447 & 448	61, 66, 99, 100	E-11	Touching Goregaon Mulund Link Road (E)	18109	Housing for Dishoused	Proposed	Changed to that of Public Housing T-98 (viii)

APPENDIX - I (Cont.)

'T' WARD

Sr. No.	Village	C.T.S. No. S. No.	Tikka No.	Revised D.P. Sheet No.	Location	Area in Sq. mt. mts.	Purpose of reservation	Existing Proposed	REMARKS
1	2	3	4	5	6	7	8	9	10
	9. (C.) Public Housing								
305.	Mulund	1111 (pt)	71	E-6	South of existing Fire Station (E)	6211	Housing (Retained)	Proposed	
306.	Mulund	892, 893, 894, 891, 899, 898, 890, 895, 896, 1020, 1019, 1018, 1017, 1016, 1021, 1022, 1023, 1024, 1025, 1026, 1027, 1028, 1029, 1030, 1031, 1046, 1047, 1048, 1049, 1050, 1051, 1052, 1054, 1055, 1056, 1109, 1106, 1104, 1103, 1102, 1101, 1100, 1099, 1098, 1097	45, 46, 58, 49	E-6	North of Devidayal Road	64056	Housing (Retained)	Proposed	
307.	Mulund	1322	102, 112	E-7	West of E.E. Highway	20824	Housing (Retained)	Proposed	
308.	Mulund	902 (p), 903 (p), 905 (p)	46, 47	E-6	Dr. Rajendra Prasad Road	2554	Housing (Retained)	Proposed	
309.	Nahur & Mulund	568 (p), 573 (p), 562 (p), 566 (p), 569 (p), 570 (p)	26, 25, 37	E-10, E-6	Between Nahur Road & P.K. Road	74198	Housing (Retained)	Proposed	

APPENDIX - I (Cont.)

'T' WARD

Sr. No.	Village	C.T.S. No. S. No.	Tikka No.	Revised D.P. Sheet No.	Location	Area in Sq. mt. mts.	Purpose of reservation	Existing Proposed	REMARKS
1	2	3	4	5	6	7	8	9	10
310.	Mulund	693 (p), 676 (p), 694 (p), 696 (p), 697 (p), 706, 707, 709, 713, 711 712 (p), 713 (p)	62	E-7	Sarojini Naidu Road	14872	Housing	Proposed	
311.	Mulund	755 (p), 759 (p), 831 (p)	61, 62	E-6, & E-7	Dr. Rajendra Prasad Road near (Sweeper Colony (W)	17806	Housing	Proposed	
312.	Mulund	202, 203 (p), 207 (p), 180, 179, 346, 240 (p), 241 (p), 204 (p), 205 (p), 206 (p), 243 (p), 346 (p), 492 (p), 347 (p), 345 (p), 365 (p), 404 (p), 348 (p), 304 (p), 254 (p), 255 (p), 256 (p), 257 (p), 258 (p)	90, 91, 101, 102	E-7	West side of E.E. Highway (E)	65858	Housing	Proposed	
313.	Nahur	422 (p)	5, 6, 11	E-6	Touching Mulund Colony Road	2731 (669 D+ 600 S S)	Housing	Proposed	PH-2731 Retained part reservation is changed to existing Disp. 669 sq.m.

APPENDIX - I (Cont.)

'T' WARD

Sr. No.	Village	C.T.S. No. S. No	Tikka No.	Revised D.P. Sheet No.	Location	Area in Sq. mt. mts.	Purpose of reservation	Existing Proposed	REMARKS
1	2	3	4	5	6	7	8	9	10
									included in list of Disp. Giving No.154 600 sq.m. to S S included in list of existing S S Giving No.195 (T-48)
314.	Nahur	422 (p)	5, 6, 11	E-6	Touching Mulund Colony Road	2273	Housing	Proposed	Part reservation to Public Hall, included in Sr. No. 314 A T-48
137 A.	Nahur	2475 (p), 540 (f)	108, 38	E-6	Jawaharlal Nehru Nagar, near Ambika Nagar	3098	PH/HDH	Proposed	From Sr. No. 137 T-37
	PUBLIC HOUSING								
25A.	Nahur	5 (p)	5	E-6	North west of existing M P	2066	PH/HDH	Proposed	T-4E (iv) Please refer Sr. No. 25
174.	Mulund	5 (p), 257 (p)	5, 6	E-6	Mulund Colony	1500	PH/HDH	Proposed	T-48 (v) Please refer Sr. No. 174

APPENDIX - I (Cont.)

T WARD

Sr. No.	Village	C.T.S. No. S. No.	Tikka No.	Revised D.P. Sheet No.	Location	Area in Sq. mt. mts.	Purpose of reservation	Existing Proposed	REMARKS
1	2	3	4	5	6	7	8	9	10
214.	Nahur	531 (pt), 535, 536, 537, 538, 539, 540	5	E-6	West of Existing M P	2000	PH/HDH	Proposed	T/48 (vi) Please refer Sr. No. 214
314 A.	Nahur	541 & 542		E-6	Between Tansa Pipe Line of LBS Marg	21227	PH/HDH	Proposed	T-51, New reservation
298.	Mulund	1111 (pt)	72, 71 84, 85	E-6	North of P & T Colony	40685	PH/HDH	Proposed	T/57 (ii) Municipal Housing, reservation changed to that of PH / HDH (Please refer Sr. No. 298
31 A.	Mulund	678 (p), 677 (p), 678, 678 (*)	62, 63	E-7	Behind City Survey Office	2420	PH/HDH	Proposed	T/61 Please refer Sr. No. 31
301.	Mulund	665, 667, 669, 670	99, 100	E-7	Touching Lokmanya Tilak Road & Gokhale Road	11432	PH/HDH	Proposed	Please refer Sr. No. 301 (T/94)
108.	Mulund	427, 428, 429, 430 & 431	77	E-7	East of Gavanpada Village & Near W.C.	2951	PH/HDH	Proposed	Please refer Sr. No. 108 T/74
230.	Mulund	765 (p), 712 (p)	111	E-7	Kanchawaki Compound (E)	1950	PH/HDH	Proposed	Please refer Sr. No. 230 (T/86)

APPENDIX - I (Cont.)

'T' WARD

Sr. No.	Village	C.T.S. No. S. No.	Tikka No.	Revised D.P. Sheet No.	Location	Area in Sq. mt. mts.	Purpose of reservation	Existing Proposed	REMARKS
1	2	3	4	5	6	7	8	9	10
234.	Mulund	1318 (c)	146	E-11	Touching Service road, Opp. to Cinema reservation	2369	P.H.	Proposed	Please refer Sr. No. 234 (T/98 (vi))
	9 (d.) Public Housing								
272.	Mulund	1300 (p), 1313 (p)	137, 145	E-11	East of Pumping Station	2819	Public Housing	Proposed	Please refer Sr. No. 271 (T/98 (vi))
304.	Mulund	447, 448	61, 66, 99, 100	E-11, & E-10	Touching Goregaon Mulund Link Road	18109	Public Housing	Proposed	Please refer Sr. No. 304, T/98 (viii)
75.	Mulund	1101, 1102, 1199 (p), 1097 (p), 1100	119	E-11	Mithaghar Road	5260	Public Housing	Proposed	Please refer Sr. No. 65 (T/49) (ii)
299.	Mulund	861 (pt), 1114 (pt), 1115 (pt), 1120 (pt), 1121 (pt), 1123 (pt)	120	E-11	Abutting Proposed Extn. to Sant Ramdas Road	2898	Public Housing	Proposed	Please refer Sr. No. 299 (T/100)
315.	Mulund	983	47, 60	E-6	Mahatma Gandhi Road	14364	Police Housing	Proposed	

APPENDIX - I (Cont.)

'T' WARD

Sr. No.	Village	C.T.S. No. S. No.	Tikka No.	Revised D.P. Sheet No.	Location	Area in Sq. mt. mts.	Purpose of reservation	Existing Proposed	REMARKS
1	2	3	4	5	6	7	8	9	10
9. (E.) Other Housing									
Govt. Housing, Police Housing, Court Housing									
Dhobi Housing, Telephone Housing									
316.	Nahur	550 pt., 563, 565 pt., 549 pt., 568 pt., 564 pt.	14, 15	E-6	Touching Nahur road west of Sport Complex	31953	Post & Telegraph Housing	Proposed	
317.	Nahur	550 pt., 562 pt., 565 pt., 560 pt., 561 pt.	14, 15, 25	E-6	Touching P.K. Road	48456	Post & Telegraph Housing	Proposed	
10 (a.) Water Works									
318.	Mulund	636 & 606 (pt)	14, 20	E-3	Behind Kelkar Co.	7394	Municipal Chlorination Plant (Effluent Treatment Plant)	Existing	Deleted & shown as existing influent Treatment Plant of the company (T/11)
10. (b.) Drainage Purification Works									
319.	Mulund Nahur Bhandup	S. No. 63 S. No. 157 S. No. 351	E-11 & E-14		East of E.E. Highway	650000	Sewerage Treatment Works.	Proposed	

APPENDIX - I (Cont.)

'T' WARD

Sr. No.	Village	C.T.S. No. S. No.	Tikka No.	Revised D.P. Sheet No.	Location	Area in Sq. mt. mts.	Purpose of reservation	Existing Proposed	REMARKS
1	2	3	4	5	6	7	8	9	10
10. B. (d) Drainage Pumping Station									
320.	Mulund	1302, 1305, 1308, 1309, 1310, 1311 & 1312	137, 145	E-11	Abutting 90' road (East)	20658	Pumping Station	Existing	
321.	Mulund	1303 & 1304	137, 145	E-11	Touching existing Pumping Station Mulund (E)	14700	Extension to Pumping Station	Proposed	
10. (c) Conservancy Chowkies / Ward Chowkies									
322.	Mulund	626 (pt)	19	E-3	Balrajeshwar Road	1226	Municipal Chowky	Proposed	
323.	Mulund	676 (pt)	76	E-7	Near Topiwalla College	400	Municipal Chowky	Proposed	
324.	Mulund	1292 (p), 1293 (p), 1294 (p)	129	E-11	North of proposed Cemetery (E)	500	Municipal Chowky	Proposed	
10 D. (B) SUB-STATION									
325.	Mulund	489, 1316 (p), 1318 (p)	153, 154	E-11	Touching Goregaon Mulund Link Road & Express Highway	38000	Maharashtra State Electricity Board Sub-Stn. & Quarters	Proposed	
326.	Mulund	1320 (p)	112	E-7	East of E.E. Highway	850 Sq.M.	Electric Sub-Stn. & Receiving Station	Proposed	

APPENDIX - I (Cont.)

'T' WARD

Sr. No.	Village	C.T.S. No. S. No.	Tikka No.	Revised D.P. Sheet No.	Location	Area in Sq. mt. mts.	Purpose of reservation	Existing Proposed	REMARKS
1	2	3	4	5	6	7	8	9	10
13 A.	Mulund	115 (p)	91, 92	E-7	East of E.E. Highway	2500	Electric Sub-Stn.	Proposed	Please refer remarks at Sr. No. 15 (T/90)
	10. E. (a) Post Office								
327.	Nahur	422 (p)	6	E-6	Off Mulund Colony Road	334	Post Office	Proposed	
328.	Mulund	1320 (p)	113, 103	E-7	East of E.E. Highway	500	Post Office	Proposed	
	10. E. (b) Telephone Exchange								
329.	Nahur	574 (p)	27	E-6	S.L. Road	3142	Telephone Exchange	Proposed	Changed to that of Telephone Service Centre
330.	Nahur	562, 550, 563	15, 25	E-6	Post & Telegraph Layout, Nahur	4087	Telephone Exchange	Proposed	
	10. F. Police Station								
331.	Mulund	934	41	E-6	Netaji Subhash Chandra Bose Road	3009	Police Station	Existing	
332.	Mulund	8 (p)	13	E-3	Abutting 27.40 m. D.P. Road Municipal Limit	1570	Police Station	Proposed	

APPENDIX - I (Cont.)

T WARD

Sr. No.	Village	C.T.S. No. S. No.	Tikka No.	Revised D.P. Sheet No.	Location	Area in Sq. mt. mts.	Purpose of reservation	Existing Proposed	REMARKS
1	2	3	4	5	6	7	8	9	10
333.	Nahur	555 (p)	47	E-10	North side of Nahur Village Road	566	Police Station	Proposed	
334.	Mulund	1320 (p)	113	E-7	East of E. E. Highway	500	Police Station	Proposed	
11. COMMUNICATION (c) B.E.S.T.									
335.	Mulund	649 (p)	30	E-6 & E-7	Check Naka LBS Marg	3678	BEST Bus Depot	Existing	
336	Mulund	1111 pt., 1113 pt.	71, 72	E-6	South of Devidayal Road	27512	BEST Bus Depot Staff Quarters	Proposed	Out of and adm. @ 33000 sq. m. the 5483 sq.m land is celeted & included in R-zone (T-57 (I-a)
338 A.	Mulund	S. No. 351	163 & 170	E-11	Import Yard Municipal Park	10000	Import Yard	Proposed	New reserva- tion (T-107)
338.	Mulund	S. No. 351	163 & 170	E-11	Import Yard Municipal Park	25000	Export Yard	Proposed	New reserva- tion (T-107)
337.	Nahur		19, 20, 21	E-6	Touching Mulund colony road near Shastri Nagar	5000	Bus Stn. Bus Depot	Proposed	Please refer site No. 21

APPENDIX - I (Cont.)

'T' WARD

Sr. No.	Village	C.T.S. No. S. No.	Tikka No.	Revised D.P. Sheet No.	Location	Area in Sq. mt. mts.	Purpose of reservation	Existing Proposed	REMARKS
1	2	3	4	5	6	7	8	9	10
338.	Mulund	1318 (p)	167, 168, 160, 161	E-11	Touching Goregaon Mulund Link Road	30000	BEST Bus Depot & Bus Stn.	Proposed	
339.	Mulund	661/2, 742 (p)	29, 30	E-6	Jn. of D.E. Upadhaya road and Globe Auto Roads	5868	BEST Bus Depot	Proposed	
340.	Mulund	1320 (p)	103	E-7	East of E. E. Highway	1500	BEST Bus Station	Proposed	
302 A.	Mulund	1320 (p)	103	E-7	East of E. E. Highway	40000	BEST Hsg.	Proposed	Corregendum
341.	Mulund	11 (d) Goods Truck Terminal 635 (p), 8 (p)	13	E-3	Touching Tansa Pipe Line at Thana Mulund boundary on West	6178	Truck Terminus	Proposed	
342.	Mulund	6 (p), & 7 (p)	13	E-3	Abutting 27.40 m. Road at Mulund Thane bouncary	9475	Truck Terminus	Proposed	
343.	Mulund	11 (g) Transport Garage 852 (p)	38	E-6	Devidayal Upadhaya Marg	6387	Transport Garage	Proposed	

APPENDIX - I (Cont.)

'T' WARD

Sr No.	Village	C.T.S. No. S. No.	Tikka No.	Revised D.P. Sheet No.	Location	Area in Sq. mt. mts.	Purpose of reservation	Existing Proposed	REMARKS
1	2	3	4	5	6	7	8	9	10
344.	Mulund	117, 115, 118, 119, 107, 106, 104, 103, 132 (p), 105 (p), 112 (p), 111 (p), 110, 109, 108, 114 (p)	79, 92 93	E-7	East of E.E. Highway	37428	Transport Garage	Proposed	
	12 (a) Municipal Office / Stores								
345	Mulund	1122, 1123, 1124 & 1125	60, 61	E-6	Devidayal Road	6758	Municipal Ward Office	Existing	
346.	Mulund	1127	73, 74	E-6	Devidayal Road	1881	Extension to Ward Office	Proposed	T/3-
347.	Mulund	852 (p)	38	E-6	D.D. Upadhaya Marg	5573	Central Store	Proposed	
	12 (b) Govt. Office								
348	Mulund	676 (p), 676/3, 678/1, 678/2	62	E-7	S. N. Road	1618	Govt. Office	Existing	
349.	Mulund	676/1, 673/2	63	E-7	Behind Topiwala College	6778	Govt. Office	Existing	
	12 (g) Road Depot								
350.	Nahur & Mulund	568 (p) *15 (p)	26	E-6	Junction of P.K. Road Goshala Road	1858	Road Depot	Proposed	

APPENDIX - I (Cont.)

'T' WARD

Sr. No.	Village	C.T.S. No. S. No.	Tikka No.	Revised D.P. Sheet No.	Location	Area in Sq. mt. mts.	Purpose of reservation	Existing Proposed	REMARKS
1	2	3	4	5	6	7	8	9	10
351.	Mulund	626	19	E-3	Model Town Road	2006	Road Depot	Proposed	
352.	Mulund	661 (p)	30, 39	E-7	Deendayal Upadhaya Road	1517	Road Depot	Proposed	
353.	Mulund	362 (p)	79	E-7	East side of Gavarpada (E)	2349	Road Depot	Proposed	
12 (h) I.T. Octroi Office									
354.	Mulund	647 (p), 648, 661 (p)	29, 30	E-3 & E-7	L.B.S. Marg	20639	T.T. and Octroi Office	Existing	
355.	Mulund	128, 129, 130, 60 (p), 53, 56, 54, 52, 53, 57 (p), 58 (p), 51, 59 (p), 132, 133 134	66, 67, 79, 80	E-7	East of E.E. Highway (East)	22757	Town duty & Octroi Office	Existing	
356.	Mulund	648	30	E-6	L.B.S. Marg	3511	Town Duty Office	Existing	
357.	Mulund	3 (p)	13	E-3	At Thana Bombay Boundary (West)	1300	Town Duty	Proposed	
358.	Mulund	7 (p)	13	E-3	Abutting 27.40 m. D.P. Road	1486	Town Duty	Proposed	
359.	Mulund	47 (p), 135	66	E-7	West side of E.E. Highway (E)	2675	Town Duty	Proposed	

APPENDIX - I (Cont.)

'T' WARD

Sr. No.	Village	C.T.S. No. S. No.	Tikka No.	Revised D.P. Sheet No.	Location	Area in Sq. mt. mts.	Purpose of reservation	Existing Proposed	REMARKS
1	2	3	4	5	6	7	8	9	10
360.	Mulund	136, 137, 138, 139, 140, 141, 142, 143	79, 92	E-7	West side of E.E. Highway (E)	3500	Export Office	Proposed	Part reservation is deleted & included in R-zone T/95
12 (j) Cinemas / Drama Theatres									
361.	Mulund	1111 (p)	71, 84	E-6	LBS Marg, Opp. Borroughs Welcome Ltd.	4180	Cinema	Existing	
362.	Mulund	873/1 to 7	48	E-6	Dr. Rajendra Prasad Road	1328	Cinema	Existing	
363.	Nahur	597	37, 38	E-10	Jawaharlal Nehru Road	10403	Cinema	Existing	
364.	Mulund	662/1 & 2, 662/4	99	E-7	Gopal Krishna Gokhale Road (East)	2006	Cinema	Existing	
365.	Mulund	1300	137	E-11	East of Pumping Station (E)	5905	Cinema	Proposed	
366.	Mulund	24 (p)	26, 18	E-6	Opp. to Model	4459	Cinema	Proposed	Deleted & included in C-1 zone (T/55)
12 (k) Public Hall									
367.	Mulund	132 (p)	73	E-6	P.K. Road	2510	Public Hall	Proposed	Part reservation is deleted & included in R-zone

APPENDIX - I (Cont.)

'T' WARD

Sr. No.	Village	C.T.S. No. S. No.	Tikka No.	Revised D.P. Sheet No.	Location	Area in Sq. mt. mts.	Purpose of reservation	Existing Proposed	REMARKS	
1	2	3	4	5	6	7	8	9	10	
314 A.	Nahur	422 (p)	5, 6, 11	E-	Touching Mulund Colony Road	1000	Public Hall	Proposed	Please refer to Sr. No. 314 (T/48)	
368.	12 (c) Shopping Centre & Housing Mulund		1258 (p)	86	E-6	Dr. Ambedkar Road	334	Shopping Centre	Existing	Changed to that of Shopping Centre (T/33)
369.	Mulund & Nahur	1111 (p), 1480 1480, 568 (p)	85 16	E-6	Kesnavpada & P.K. Road	5573	Shopping Centre & Housing	Proposed	Changed to that of shopping on ground floor, PH/HDH on upper floors (T/62)	
370.	Mulund	1143/1 to 40	74, 87	E-6 & E-7	Mahatma Gandhi Road	1709	Shopping Centre	Proposed	Changed to that of R.M. (T/63)	
371.	Mulund	520 (p)	88	E-7	G.V. Scheme near Private Primary school, Mulund (East) L.T. Road	645	Shopping Centre	Proposed	Changed to Parking Lot (T/72)	
372.	Mulund	100 (p)	93	E-7	East of E.E. Highway (East)	1254	Shopping Centre	Proposed		

APPENDIX - I (Cont.)

'T' WARD

Sr. No.	Village	C.T.S. No. S. No.	Tikka No.	Revised D.P. Sheet No.	Location	Area in Sq. mt. mts.	Purpose of reservation	Existing Proposed	REMARKS
1	2	3	4	5	6	7	8	9	10
376.	Nahur	550 (p), 598 (p)	37	E-40	Jawaharlal Nehru Road, Mehul Cinema	2369	Shopping on Ground Commercial on upper floors	Proposed	Please refer Sl. No. 376
12 (a) S.I. Estates									
373.	Mulund	1109 (p)	71	E-6	Devidayal Road	2600	Service Industries	Existing	
374.	Mulund	563 (p)	101	E-7	Abutting Existing Cemetery Mulund (E)	836	Industries	Proposed	Included in I-2 zone (T/59)
375.	Mulund	743 (p)	29	E-6	Devidayal Upadhaya Road	950	Industries	Proposed	Deleted & included partly in D.P. road & partly in I-3 zone (T/40)
376.	Nahur	550 (p), 598 (p)	37	E-10	Jawaharlal Nehru road Opp. Mehul Cinema	2369	Industries	Proposed	Changed to that of shopping on Ground floor Commercial user on upper floors included in list of S.C. (T/13)

APPENDIX - I (Cont.)

'T' WARD

Sr. No.	Village	C.T.S. No. S. No.	Tikka No.	Revised D.P. Sheet No.	Location	Area in Sq. mt. mts.	Purpose of reservation	Existing Proposed	REMARKS
1	2	3	4	5	6	7	8	9	10
12 (r) Godowns / Sp. Godowns									
377.	Mulund	47 (p) & 135 (p)	65, 55 79	E-7	West of E.E. Highway	5527	Timber Godown	Proposed	Deleted & included in I-2 zone
47 A.	Mulund	S. No. 351	1	E-11	Municipal Park	3,30,000	Godown complex for Hazardous Semi Hazardous Chemical Industries	Proposed	T/94
PARKING LOT									
371.	Mulund	CTS No. 520 (p)	88	E-7	G.V. Scheme near Pvt. Primary School	645	Parking Lot	Proposed	Please refer Sr. No. 371 (T/72)

(Note : The areas mentioned above are all tentative.)

**REVISED SANCTIONED DEVELOPMENT OF GREATER BOMBAY
SUMMARY OF REVISED SANCTIONED DEVELOPMENT
PLAN PROPOSALS**

'T' WARD

Sr. No.	Amenity	Existing Amenities		Amenities proposed in revised sanctioned Development Plan		Total Proposed + Existing		Remarks
		No.	Area in sq. mts.	No.	Area in sq. mts.	No.	Area in sq. mts.	
1.	Open Space							
a)	Recreation ground	1	2108	39	474214	40	476322	
b)	Parks	--	--	3	1554247	3	1554247	
c)	Play grounds (Exist. Mulund Gymkhana)	1	63948	61	280873	72	344821	
d)	Stadium	--	--	--	--	--	--	
e)	Swimming Pools	--	--	--	--	--	--	
f)	Clubs	--	--	--	--	--	--	
g)	Gardens	6	41421	8	28211	14	69632	
h)	Gymnasiums	--	--	--	--	--	--	
2.	Education							
a)	M+F & P+P	14	34312	28	70331	42	104643	
b)	S+S	20	57098	21	51344	41	108442	
c)	College & Polytechnics	1	3340	2	19611	3	22951	
d)	Technical & Other Institutions	1	36445	1	13448	2	49888	
3.	Medical Relief							
a)	General Hosp. & Specific Hosp.	2	11775	--	--	2	11775	
	Pvt. Hospitals	2	59511	--	--	2	59511	
		1	1394	--	--	1	1394	

(Cont.)

Sr. No.	Amenity	Existing Amenities		Amenities proposed in revised sanctioned Development Plan		Total Proposed + Existing		Remarks
		No.	Area in sq. mts.	No.	Area in sq. mts.	No.	Area in sq. mts.	
	b) M.H.	1	1321	2	6200	3	7521	
	c) D +	1	3121	6	6547	7	7868	
	d) Health Centre	--	--	--	--	--	--	
	e) Sanitorium	--	--	--	--	--	--	
	f) Leprosy Home	--	--	--	--	--	--	
4.	Market							
	a) Market & Mun. Housing	4	4322	--	--	4	4322	
	b) Retail Market	--	--	6	15415	6	15415	
5.	Library	--	--	2	2753	2	2753	
6.	Welfare Centre							
	a) Welfare Centre	2	2352	11	24105	13	26457	
	b) Cultural Centre	--	--	1	9240	1	9240	
	c) Community Hall & Health Centre	--	--	1	1750	1	1750	
7.	Fire Brigade	1	8707	1	5526	2	14233	
8.	Cemeteries / Cremation Ground	10	55,066	7	1,29,434	17	1,84,500	
9.	Housing							
	a) Municipal Housing	--	--	1	182530	1	182530	
	b) Housing for dishouse	--	--	1	14880	1	14880	

(Cont.)

'T' WARD

Sr No.	Amenity	Existing Amenities		Amenities proposed in revised sanctioned Development Plan		Total Proposed + Existing		Remarks
		No.	Area in sq. mts.	No.	Area in sq. mts.	No.	Area in sq. mts.	
c)	Public Housing	--	--	25	556074	25	556074	
c)	Other Housing with as Govt. etc.	--	--	1	14364	1	14364	
	Govt. Hsg. Police Housing, Court Housing Drohi Housing Telephone Housing	--	--	2	80409	2	80409	
10.	Public Utility							
A)	Water							
a)	Reservoir	--	--	--	--	--	--	
b)	RE.'s land	--	--	--	--	--	--	
c)	Pump House / Station	--	--	--	--	--	--	
d)	Water Works	1	7394	--	--	1	7394	
l)	Octroi Offices (TD)	3	43907	4	8961	7	55869	
j)	P.S.C S.	--	--	--	--	--	--	
k)	cinema / Drama Theaters	4	17917	1	5905	5	23822	
l)	Public Halls	--	--	2	3510	2	3510	
m)	Mun. Printing Press	--	--	--	--	--	--	
n)	Museums	--	--	--	--	--	--	
o)	Net Drying Yards & Fishing Activities	--	--	--	--	--	--	
p)	Shopping Centre	1	334	3	9196	4	9530	

(Cont.)

'T' WARD

Sr. No.	Amenity	Existing Amenities		Amenities proposed in revised sanctioned Development Plan		Total Proposed + Existing		Remarks
		No.	Area in sq. mts.	No.	Area in sq. mts.	No.	Area in sq. mts.	
q)	Industrial Estate	--	--	--	--	--	--	
r)	S. I. Estate	1	2600	--	--	1	2600	
s)	Godowns/Spl. Godowns	--	--	1	3,30,000	1	3,30,000	
t)	Workshops	--	--	--	--	--	--	
u)	Warehousing	--	--	--	--	--	--	
v)	Govt. printing Press	--	--	--	--	--	--	
w)	Civil Defence	--	--	--	--	--	--	
x)	Pedhla/Rehousing of Shops	--	--	--	--	--	--	
y)	Export Yard	--	--	1	25000	1	25000	
z)	Import Yard	--	--	1	10000	1	10000	
B)	Drainage							
a)	Drainage Purification Works	--	--	1	650000	1	650000	
b)	Balancing Reservoir	--	--	--	--	--	--	
c)	Lagoons	--	--	--	--	--	--	
d)	Pumping Station	1	20658	1	14700	2	35358	
C)	Refuse disposal							
a)	Night Soil Depot	--	--	--	--	--	--	
b)	Refuse Transfer Station	--	--	--	--	--	--	
c)	Refuse Sheds	--	--	--	--	--	--	
d)	Conservancy Chowkies, Ward Chowkies	--	--	3	2126	3	2126	

(Cont.)

'T' WARD

Sr. No.	Amenity	Existing Amenities		Amenities proposed in revised sanctioned Development Plan		Total Proposed + Existing		Remarks
		No.	Area in sq. mts.	No.	Area in sq. mts.	No.	Area in sq. mts.	
D)	Electricity							
a)	Receiving Station	--	--	--	--	--	--	
b)	Sub-Stations	--	--	3	41350	3	41350	
E)	Post & Telegrams							
a)	Post Office	--	--	2	834	2	834	
b)	Telephone Exch.	--	--	1	4087	1	4087	
c)	Telephone Service Centre	--	--	1	3142	1	3142	
d)	P & T Garage	--	--	--	--	--	--	
F)	Police Station	1	3009	3	2636	4	5645	
1.	Communications							
a)	Roads	--	--	--	--	--	--	
b)	Railways	--	--	--	--	--	--	
c)	BEST staff Quarters	1	3678	1	27512	2	31190	
	Staff Quarters	--	--	5	83368	5	83368	
d)	Parking Lot	--	--	1	645	1	645	
e)	S.T. Depots etc.	--	--	--	--	--	--	
f)	Transport Garage	--	--	2	43815	2	43815	
g)	Airport	--	--	--	--	--	--	
h)	Jetty	--	--	--	--	--	--	

(Cont.)

'T' WARD

Sr. No.	Amenity	Existing Amenities		Amenities proposed in revised sanctioned Development Plan		Total Proposed + Existing		Remarks
		No.	Area in sq. mts.	No.	Area in sq. mts.	No.	Area in sq. mts.	
12.	Miscellaneous							
a)	Municipal Offices	1	6578	1	381	2	8459	
b)	Municipal Stores	--	--	1	5573	1	5573	
c)	Govt. Offices	2	8396	--	--	2	8396	
d)	Courts	--	--	--	--	--	--	
e)	Dog Kennel	--	--	--	--	--	--	
f)	Cattle Ponds	--	--	--	--	--	--	
g)	Johbi Ghats	--	--	--	--	--	--	
h)	Road Depot	--	--	4	7730	4	7730	

(Note : The areas & C.S.T. No. mentioned above are all tentative)

