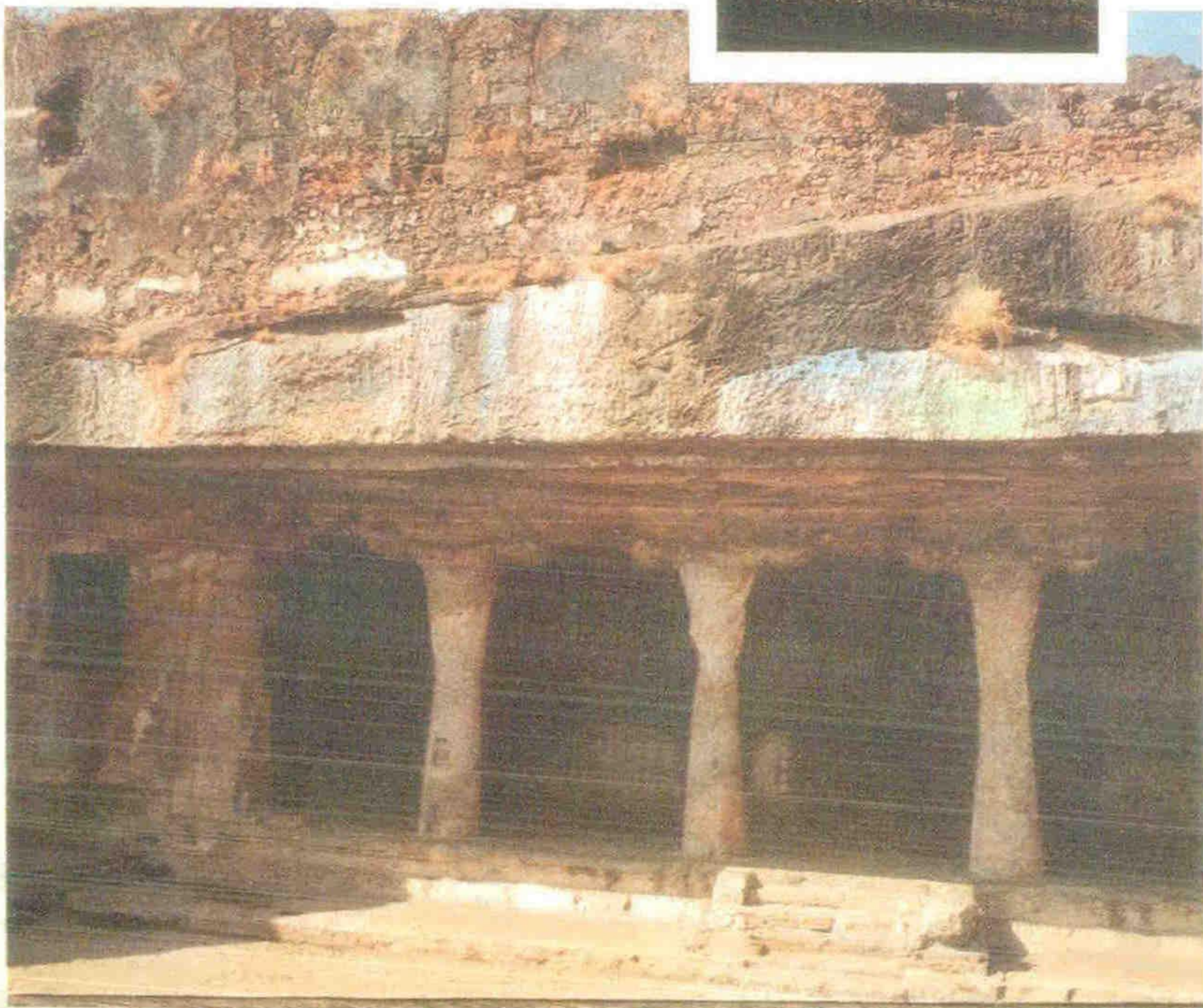
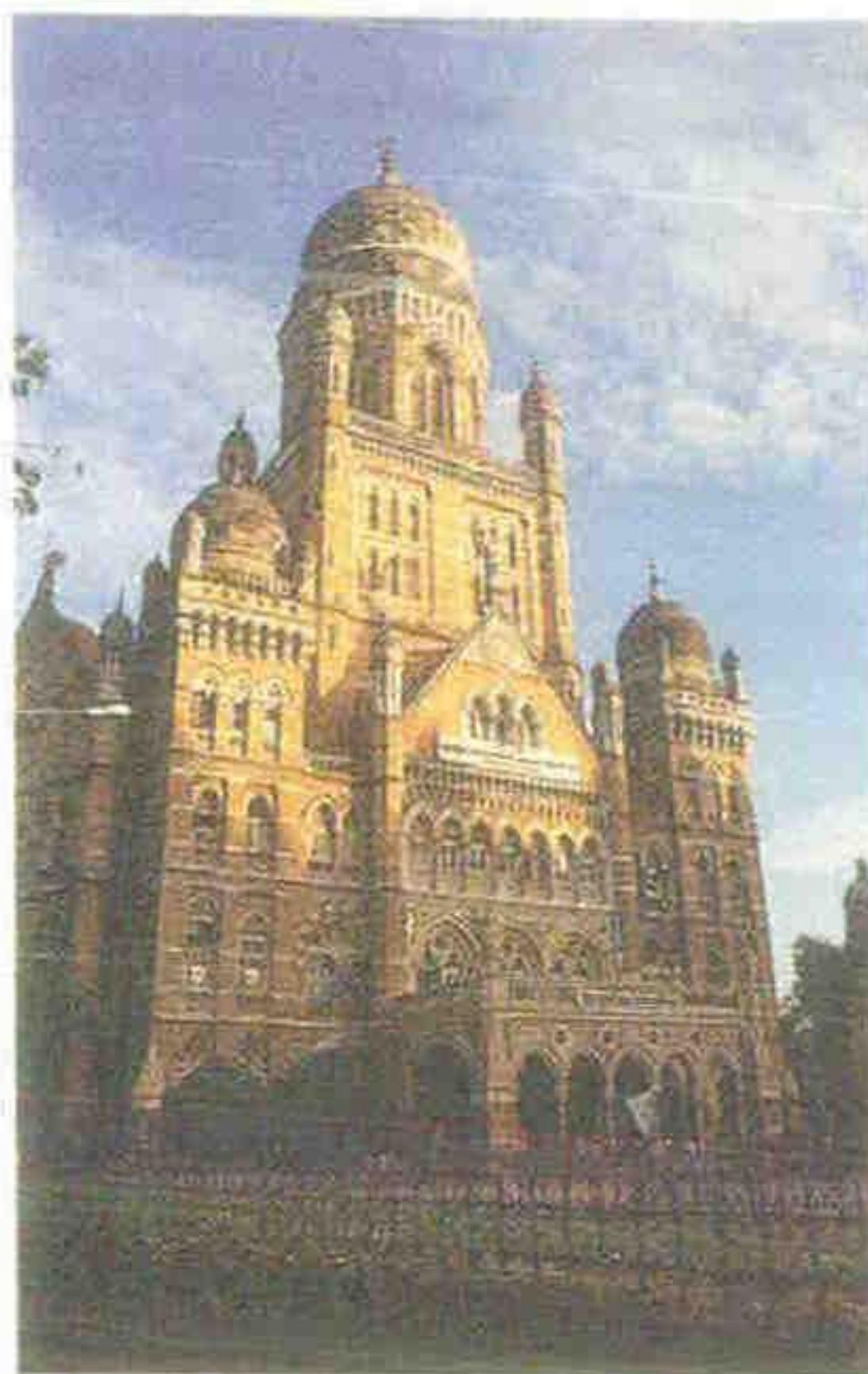




MUNICIPAL
CORPORATION OF
GREATER BOMBAY

know your ward development plan 'K'/EAST WARD



● 1st COVER PAGE

MAHAKALI CAVES

● BACK COVER PAGE

ISMAIL YUSUF COLLEGE

RESIDENTIAL DEVELOPMENT AT JOGESHWARI VIKHROLI LINK ROAD



FOREWORD

The municipal corporation of Greater Bombay is an autonomous Body, established under the provisions of Bombay Municipal Corporation Act, 1888 to administer the civic affairs of the Bombay City. The Municipal Commissioner is the Chief Executive Head of this Body and is responsible for providing and maintaining civic services in the City.

As per the provisions of Bombay Town Planning Act, 1954, it was necessary for the Municipal Corporation to prepare a Development Plan for Greater Bombay area. Such plan was, therefore, prepared which came into force in 1967. This Development Plan was for a period of twenty years, i.e. 1961 to 1981. This Development Plan however, was not effective as it did not involve any public participation and relied entirely on the Municipal Corporation to generate resources to meet the cost of acquisition of land, removal of encumbrances and development of the amenities. Moreover, there were no specific provisions available to raise the funds solely for the purpose of implementation of the Development Plan.

Keeping in view of the weaknesses of the First Development Plan, the Municipal Corporation has now revised the said Development Plan. The revised Development Plan has already come into force and is effective upto year 2001. This plan involves public participation and there are such provisions in the said Development Plan and the Development Control Regulations, 1991, sanctioned alongwith the said Plan that it would be possible now for the Municipal Corporation to implement the said plan without such financial liability.

It is felt that the citizens should be made aware of the broad outline of the Development Plan and the Development Control Regulations, 1991, so that they would be able to understand and participate more effectively in the implementation of the said Development Plan.

For the sake of convenience and to make it more effective, it is proposed to prepare a booklet '**Know Your Ward Development Plan**' for each Municipal Administrative Ward and print it for the benefit of general public.

We have great pleasure to publish the booklet in this series titled '**Know Your Development Plan for K/E ward**'. We are sure that it will help citizens to understand the basic characteristics of 'K/E' Ward, the amenities already existing in the Ward and the amenities proposed to be developed in the Revised sanctioned Development Plan. It is hoped that the citizens would make full use of this booklet & help the Municipal Corporation in implementing the Development Plan for betterment of this great metropolis.

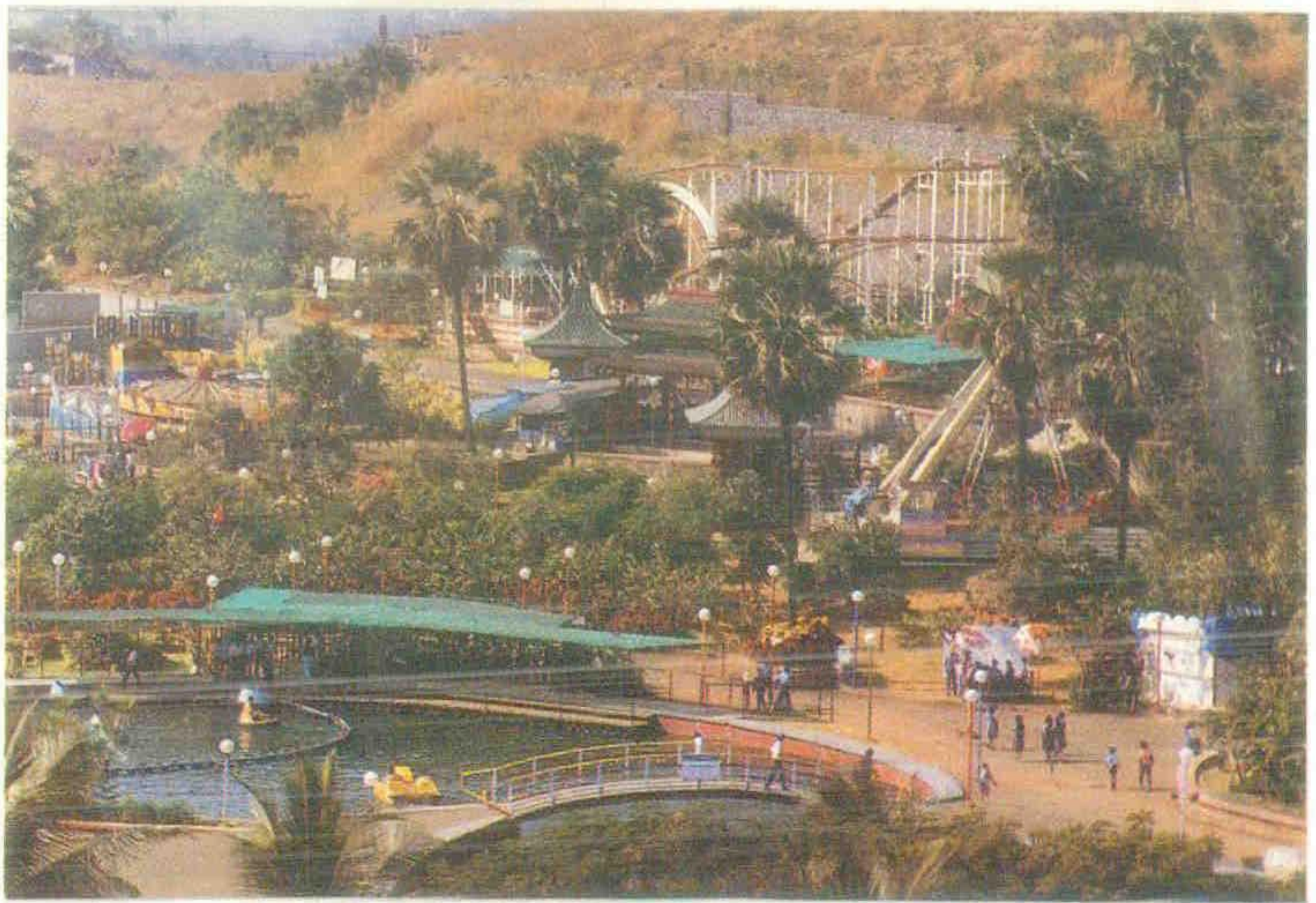
V. N. ZURALE
CH.E.(D P)

A. N. KALE
DIR.(E.S. & P)

SUDHA BHAVE
ADDL. MUNICIPAL COMMISSIONER

S. G. KALE
MUNICIPAL COMMISSIONER

FANTASY LAND



KNOW YOUR WARD

DEVELOPMENT PLAN

K/EAST WARD

1. BACKGROUND:

Three and half centuries ago, Bombay was a group of seven tiny islands predominantly inhabited by Kolis and the main trades were fishing, agriculture and coconut plantation, etc. In 1667, these islands were taken on lease by East India Company for the purpose of trade and commerce. They established a port, being the most suitable location and the same was constructed where the Gateway of India stands today. This started the development of Bombay City, which has now grown into metropolis.

Earlier the limit of Municipal corporation was confined to City area only. The suburban areas, which are now comprised in 'L', 'M', 'N', 'H' & 'K' wards were merged and brought within the jurisdiction of the Corporation in the year 1950, whereas the extended suburbs areas comprising of 'S', 'T', 'P', and 'R', wards were merged and brought within the Corporation limit in the year 1957. With the passage of time with all around development, the area within the jurisdiction of the Corporation now called as Greater Bombay has grown into the Great Metropolis with the population of around 1 crore.

The City has been divided into administrative wards for the purpose of local administration. With the passage of time, larger wards were subsequently divided and today, there are 23 administrative wards for the purpose of local administration. K/east ward admeasures 24.78 sq.kms. in area. It is bounded by Western Railway line

on West side, Mithi River on East side, Aarey colony on north side and Sahar Aerodrome on South side. It is accessible from the Vileparle, Andheri & Jogeshwari suburban stations of Western Railway. As per the census of 1991, the population of K/ East ward is 6,90,779.

2. CHARACTERISTICS:

The areas of K/East ward was added in 1950 to the Greater Bombay and as such, development is of mixed type i.e. there are Gaouthanes, like Marol, Bamanwada and Majas. Since the area is very spread out away from the main city, lot of area is developed for industrial purposes. In fact, the M.I.D.C. of Bombay is situated in this ward. Many areas in this ward are also developed for commercial use. This ward also housed the well-known Vervali Hill Reservoir. As such, general occupancy of this ward is of mixed type i.e. old Gaouthans, industrial development, commercial development and the residential development. Similarly, there are Town planning scheme already sanctioned in the past in Vileparle (East) area, which is a planned development.

The ward contains the old Gaouthan areas like Marol, Bamanwada, Sahar, Majas, Gundavali, where the development is of ground floor structure having very less manoeuvring areas. The residents were mainly Kolis having business connected with the fishing activities.

The ward contains lot of industrial development including one of M. I. D. C. at Marol. Out of the entire chunk of land falling in the layout of Maharashtra Industrial Development Corporation, part of the land is earmarked for an export oriented activities, popularly known as Santacruz Electronics Export Project Zone (Seepz). There are many pharmaceutical industries, lot of

area in this ward is placed in an industrial zone. However, because of the new D. C. Regulations, many proposals have been received for conversions of such industries to commercial users.

The ward contains Sahar International Airport, which has given impetus to the hotel activities in the vicinity of the same.

There also exists domestic terminal viz. terminal I & I.A., Catering the needs of passengers travelling all parts of India through Bombay. The five starred hotels, like Hotel Leela, Hotel Ambassador, are already constructed in this locality.

In the south of K/East i.e. in Vileparle (East), there are Town planning scheme, Viz. T.P.S.I., II, IV & V having a planned residential development.

This ward has the biggest Police Armed Headquarters Training Centre, wherein the activity of training of Police personnel in entire Maharashtra State is carried out.

The predominant features of the ward are as under:-

1. The oldest Caves known as Mahakali Caves Jogeshwari are existing in this area.
2. The Veravali Hill Reservoir provides water. This area is situated near the Mahakali Caves.
3. There is a well known kamalistan Studio along the Jogeshwari-Vikhroli Link road.
4. The well-known Amusement Park called as 'Fantasy Land' has been started recently in this ward.

5. The oldest Government College known as Esmail Yusuf College is situated in Jogeshwari (East).

6. The biggest plot owner's housing Society known as Sher-E-Punjab Housing society is situated in Northern part of this ward.

7. The Corporation's prestigious Marol Cancer Hospital is taking shape in this ward along the Marol-Maroshi Road.

2.1 The K/E ward is properly served with network of roads, which includes six major roads as under:-

1. Mathuradas Vasanji Road (Andheri-Kurla Road).
2. Mahakali Caves road.
3. Swami Nityanand road (Sahar road)
4. N.S.Phadke Marg (Andheri Ghatkopar Link road).
5. Jogeshwari-Vikhroli Link road.
6. Western Express Highway.

The K/East ward is centrally located in the suburbs and as such, it provides a link between western and Eastern Suburbs through the major link roads, like Andheri Kurla Road, Andheri Chatkopar road and Jogeshwari-Vikhroli Road. The prestigious school of Bombay viz. Parle Tilak Vidyalaya, Chinoy College & Ismail Yusuf College are situated in this ward.

The Sahar Airport is situated in the K/East ward and as such, the vehicular traffic in this area has attained importance. The Sahar Road, which connects the Andheri Railway station to the Airport has become an important link connecting Western Express Highway to the Airport. Consider-

ing the lot of traffic, part of portions of the Sahar Road Andheri Kurla Link Road and Andheri Ghatkopar Link road have been concretized.

3. DEVELOPMENT PLAN-1967:

As per the provisions of the Bombay Town Planning Act, 1954, the development plan of Greater Bombay was first prepared by the Municipal Corporation for the areas within their jurisdiction. The development plans of various wards were sanctioned by the Government from 1965-67. Accordingly, the development plan of K/East ward was sanctioned in the year 1967. The development plan includes zoning for Residential, Commercial, industrial and No Development Zone. It also includes reservations for various public amenities and utilities.

3.1 Due to financial stringency and various other constraints, the development plan of 1967 could be implemented to a very small extent by the Municipal Corporation. As a result, very few reservations could be developed in this ward.

4. REVISED DEVELOPMENT PLAN-1991:

After sanctioning of the early development plan, there were number of changes in policies, which were taken into account while preparing the development plan. Further in the meantime, the M.R.&T.P. Act came into force replacing Bombay Town Planning Act, 1954, which also provides for appointment of a Regional Authority. The Government, therefore, appointed Bombay Metropolitan Regional Development Authority to look after the development of various areas surrounding Bombay and also lay down policies and guide-lines for development within City of Bombay.

Taking into consideration these changes and being obligatory function under the M.R.&T.P. Act, the development plan of Greater Bombay has been revised,

which has been sanctioned by the Government from time to time in the recent past. The sanctioned revised Development Plan of K/East Ward has come into force from 29.12.1992.

4.1 The State Government has also sanctioned the Development Control Regulations, 1991 and the same have come into effect from 25.3.1991.

4.2 The list of existing amenities and sites reserved for proposed amenities is given in Appendix-1. This is a summary statement, which includes the number of existing and proposed amenities and the corresponding area in sq. mts. Further the entire K/East Ward is having 1750.40: 80.05: 425.95: and 221.60 Ha. area in Residential, Commercial, Industrial and "No Development Zone" respectively.

5. Implementation of Revised development Plan:

The revised Development Plan is for a period of 20 years from 1981 to 2001. Due to several procedural difficulties, the plan came to be sanctioned only in 1992. As such, a short time is available for implementation. It will be, therefore, necessary for the Municipal Corporation to prepare a phase-wise programme to develop the amenities shown in the Development Plan within the planned period.

6. Mechanism for Development:

The proposed amenity can be developed in the following manner:

6.1 The Municipal Corporation can acquire the plot under the provisions of the M.R.&T.P. Act, remove the encumbrance thereon by rehabilitating the authorized occupants elsewhere and developing the amenity as per the requirement of the local

population. The Corporation has to incur the cost of acquisition, rehabilitation and development. This was the basic principle adopted for implementation of the Development Plan Sanctioned in 1967. As the Municipal Corporation could not provide adequate financial resources, the amenities could not be developed to the desired extent. In order to facilitate development of various public amenities and facilities, specific provisions have been made in D. C. Regulations, which will speed up the development of such reserved sites for specific purposes without incurring any expenditure by the Corporation and will minimize acquisition procedure which is costly and time consuming.

6.2 Under the D. C. Regulation No.9 list of public amenities has been given, which can be developed by the owner and handed over to the Municipal Corporation or other Appropriate Authorities as the case may be, free of cost. The owner can then develop the plot for the permissible users in the zone to

its fullest extent (treating the amenity free of F. S. I.). Thus, the Municipal Corporation or the appropriate Authority will get the constructed amenity without incurring any expenditure. The said regulation also empowers the Municipal Corporation to hand over the constructed amenity to any registered institution or trust for operation and maintenance. Due to this regulation, many reservations, such as Shopping Centre, Maternity Home, Municipal Chowky, General Hospital, Library, etc. will be available to Corporation for benefit of public at large.

6.3 An important provision has been made under the D.C.Regulation No. 34 for grant of "Transferable development Rights" (T.D.R). Under this provision, if the owner removes the encumbrance on the plot under reservation, levels the plot under reference, puts a compound wall with a gate and hands it over to the Municipal Corporation or the State Government as the case may be, free of cost, he is entitled to get the development

SANTACRUZ AIRPORT



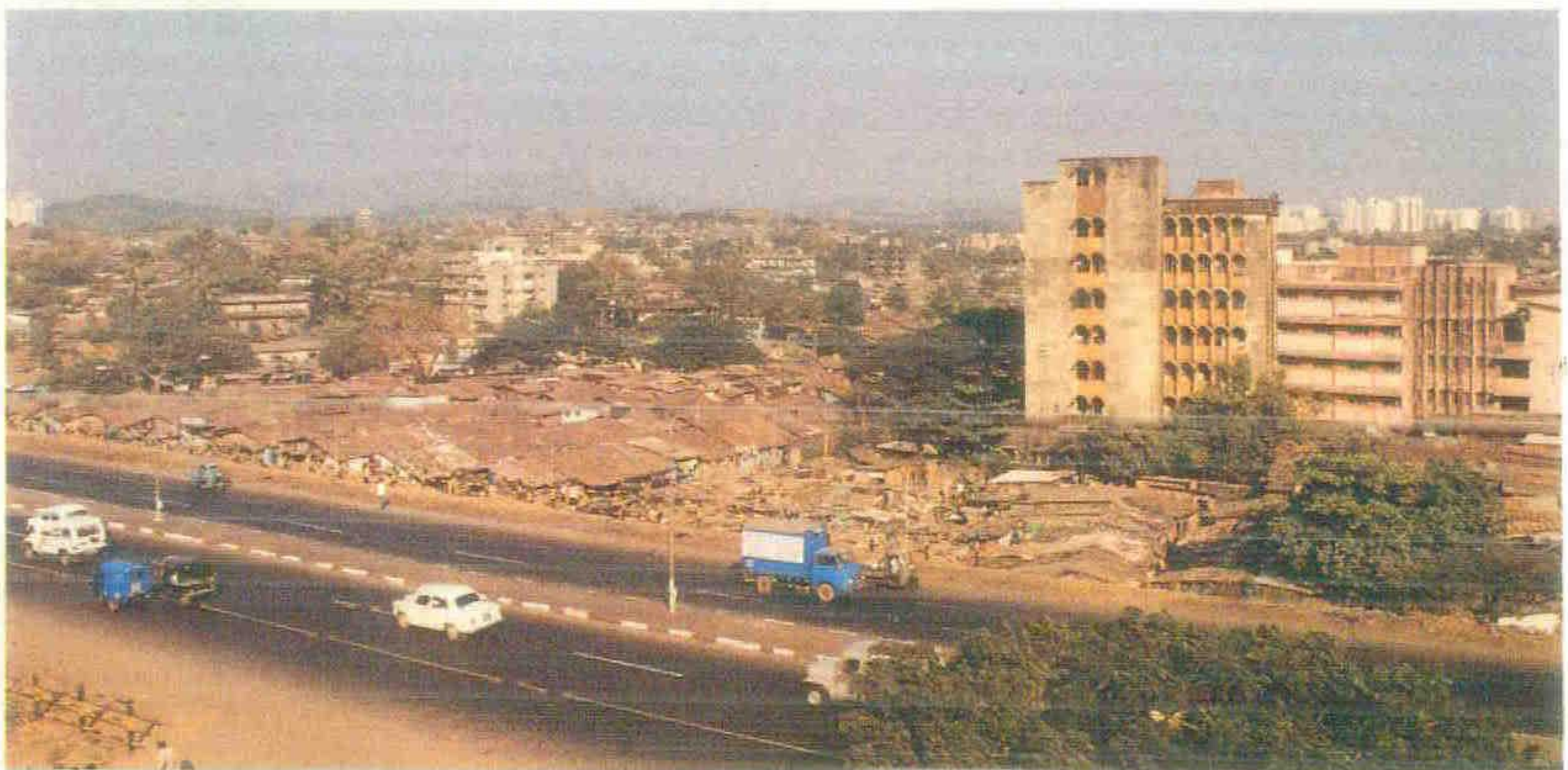
rights in the form of full F. S. I. of the plot handed over, to be used elsewhere. For the purpose of utilisation of this transferable F.S.I., the Greater Bombay area is divided into 2 zones, i.e. Receiving zone and Non-receiving zone. As such, transferable F.S.I. can be used only in the Receiving Zones. The entire city and the area between S.V. Road and Western Express Highway in the Western suburbs and area between Lal Bahadur Shastri Marg and Central Railway Main Line in the Eastern Suburbs have been placed in the Non-receiving zone. The Transferable F.S.I., therefore, will not be allowed to be used in these areas. This provision will enable the Municipal Corporation/State Government to take over plots free of cost, for which the benefit of D.C. Regulation No. 9 (accommodation reservation) is not available.

6.3.1 The D.C. Regulation No. 34 also allows the owner to hand over the plot as specified above along with constructed amenity threat, as per the requirements of the

owner is entitled to have further additional F.S.I. (Transferable) equivalent to the built-up area of the amenity constructed. This Regulation No. 34 not only provides taking over the reserved plot free of cost, but also enables the concerned authority to get the amenity constructed thereon free of cost.

6.3.2 As far as K/East ward is concerned, the land cost has escalated in consonance with the general escalation of land cost in Greater Bombay. Therefore, the provisions of T.D.R. generating from this area towards Northern side, etc. will not be very attractive. However, since the amenity reserved for Ward are likely to be cleared and the F. S. I. can be utilized within the Ward, there is likelihood of such amenities coming into Municipal possession in lieu of grant of T. D. R. Moreover, quite a much area of this Ward is in receivable zone for T. D. R. and as such, T. D. R. generated from the Island City of 'H' & 'M' Wards is likely to

MAJAS WADI



be utilized on these lands. Considering this, the residential development in this locality is bound to get boost in coming year.

6.4 As regards sites reserved for public housing/high density housing, the D. C. Regulation No.9 allows this reservation to be developed by the owner, subject to certain conditions. The most important condition being that 10% of the tenements of 180 Sq. ft. carpet area are to be handed over to the Municipal Corporation for accommodating the project affected persons, who are required to be shifted due to development of reservation, including widening of roads, etc. The owner, however, is entitled to get construction cost of each tenement plus 15% profit thereon. Public Housing reservation in the Ward could be developed by taking advantage of this provision.

6.5 Lot of area in this ward is situated in an Industrial Zone. However, in view of the provisions of the D. C. Regulation No. 56/57, this land can be allowed to be developed for commercial/residential purposes. As such, the industrial activity may receive and commercial/residential development in this ward is likely to get impetus.

7.1 Authorities responsible for implementation:

Since the revised Development Plan is required to be implemented within a span of years, it is necessary that the proper

phase-wise programme is prepared taking into consideration the priorities of local population. It is, therefore, advisable that the entire Ward is divided into suitable sectors and priorities are fixed for development of amenities therein. Based on these sectorwise priorities, a final priority list for the entire Ward can be prepared. Since the preparation of priority list is directly related to the local needs, the W. Os. /Zonal D. M. Cs. should prepare such a priority list in consultation with sectional heads in the Ward and local Councillors elected representatives and local community.

7.2 The office of the Ch. Engineer (Development Plan) will prepare yearwise priority for availing T. D. R. and publish the same for the benefit of owners of the revised plots (such publication of yearly priority list for availing T.D. R. is obligatory under the provisions of D. C. Regulation No.34).

7.3 It will also be necessary to take timely steps to develop the plots made available under T. D. R. facility or to put to use the constructed amenity either under T. D. R. facility or under accommodation reservation. The Zonal D. M. C., W. O. and the Local Councillors will have to take a lead and play a constructive role in fuller implementation of the Development Plan of the Ward thereby making available amenities and facilities to residents of the locality.

APPENDIX - I
List of Reservation for Public Purposes in the Sanctioned
Revised Development Plan of K/East Ward (1984 - 2001)

Sr. No.	Village D.P.	C.T.S. No. or S. No. in	Tikka of	Revised ree-sheet No.	Location Proposed.	Area sq.m.	Purpose of Reservation.	Existing Proposed
1	2	3	4	5	6	7	8	9
1	OPEN SPACES (EXISTING AMINITIES) a) Recreating Grounds b) PARKS		NIL					
1.	Vileparle	F.P. No. 72	TPSI	W-45	M.G. Road	1358	Park	Existing
2.	Gundavali	CTS No. 523,522, 524	8	W-42	Jn. of M. V. Road & Telly gul'y Vaikuntha Park	5240	-do-	-do-
3.	PLAY GROUNDS Vileparle CTS No.785		41	W-45 W-42	Paranjape Scheme on the north of Hanuman Road (ParleTilak Vidyalaya)	4060	Play Ground	-do-
4.	Andheri	Vijay Nagar layout	7	W-42	Vijay Nagar Paranjape School	1650	-do-	-do-
5.	Vileparle	F. P. No.296	TPSII	W-45	Play ground x Road	4710	Play ground	-do-

APPENDIX - I CONTD.

K/EAST WARD

Sr. No.	Village D.P.	C.T.S. No. or S. No. in	Tikka of	Revised ree-sheet No.	Location Proposed.	Area sq.m.	Purpose of Reservation.	Existing Proposed
1	2	3	4	5	6	7	8	9
6.	-do-	F. P. No. 161&162	TPSV	W-45	Dahanukar Coll.	7946	Collegecum	-do-
7.	-do-	F.P. No.257(P)	-do-	W-45	Shradhanand Road	1000	PlayGround	-do-
8.	Chakala	337(P),338(P)	15-16	W-42	30' D. P. Road in Tarun Bharat Co-op. Housing Soc.layout	875	-do-	-do-
9.	-do-	S. No.63, 64(P)	18	W-42	East of Wireless Station	1550	-do-	-do-
10.	Sahar	CTS No. 293(P)	15-16	W-45	Behind Church	915	-do-	-do-
11.	Ismaliya	CS No.1(P)	6	W-39	Ismaliya College	45480	-do-	-do-
12.	Ismaliya	45(P)	18		Canara Goud Saraswat Co-op.Hsg.Soc.	1150	do	do-
13.	-do-	131	9 & 10	W-39	Natwar Nagar	560	-do-	-do-
14.	Gundavali	104(P)	1&2	W-42	Chinoy College	2100	-do-	-do-

APPENDIX - I CONTD.

K/EAST WARD

Sr. No.	Village D.P.	C.T.S. No. or S. No. in	Tikka of	Revised ree-sheet No.	Location Proposed.	Area sq.m.	Purpose of Reservation.	Existing Proposed
1	2	3	4	5	6	7	8	9
15.	-do-	S. No.50F	142	W-42	South of chinoy College	2415 1000 1415	-do-- SAS P.G.	do- -do- proposed
16.	Gundavali	276(P), 205(P)S.No.	9-10	W-42	Kamgar KalyanKendra	1985	P.G.	-do-
17.	Mulgaon	S.No.85(P), CTSTNo.18(P)	6	W-39	Connoseian HighSchl. MahakaliRd.	13125	-do-	-do-
18.	Maro	CTS No.1307	27	W-43	Marol Church Road	3825	-do-	Exist.
19.	Chakala	C.S. No.104, 100(P),103(P)	19	W-42	Opp. Fit Tight Nut Bolt Compound	4180	-do-	-do-
20	-do-	S. No - 52/2		W - 42	Holi S Piril Hogh School, M. V. Road	1280	- do -	-do-

APPENDIX - I CONTD.

K/EAST WARD

Sr. No.	Village D.P.	C.T.S. No. or S. No. or	Tikka of	Revised re-se-sheet No.	Location Proposed.	Area sq.m.	Purpose of Reservation.	Existing Proposed
1	2	3	4	5	6	7	8	9
(G) Gardens :								
21.	Vileparle	CTS No.582	41,42	W-42-45	On the south of Shah Cinema.	3264	Garden	do
22.	do-	FP No.91	TPSII	W-45	At the Jn. of Malviya road & Park Road	654	-do-	-do-
23	Kondivita	293, Plot No.27	22	W-42	J. B. Nagar	3329	-do-	-do
24-	Majas	CTS No. 102 & 99 (P)	24	W-39	At the Jn of Caves Road & W.E. Highway.	7835	-do-	-do-
25.	A-dheri	677 (P)	46	W-42	On the south of Best Bus Stn. & East of Rly. Line.	225	-do-	-do-
(a) Recreation Grounds (Proposed Amentities)								
26.	Vileparle	FP No. 187 B to D, 187 A to H, 187	TPS V	W-45	West of 90, D.P. Road & east of Nanda Patkar Road.	3847	Recreation Ground	-do-
27.	Marol	Rs. No.s 132, 123, 118 (P) 124,127,125, 110 (P) 94 (P), 126, 128 129 (P), 131 (P), 133 (P)	45,44 50 & 61	W-43 W46	East of Inter National Airport Road.	77750	-do-	-do-

APPENDIX - I CONTD.

K/EAST WARD

Sr. No.	Village D.P.	C.T.S. No. or S. No. in	Tikka of	Revised re-se sheet No.	Location Proposed.	Area sq.m.	Purpose of Reservation.	Existing Proposed
1	2	3	4	5	6	7	8	9
28.	Marol	S. No. 115 (P), 114 (P), 119 122 (P), 121, (p) 111, (P), 112 (P) 113 (P), 128 (P), 113 (P), 111 (P) 83 (P)	46	W-43	South of Kurla	52600	R. G. Andheri road.	Proposed
29A.	-do-	S. No. 94. (P), 96 (P), 97 (P)	62	W-46	West of Mithi River	4800	Hot only.	-do- Project
29B.	-do-	S. No. 94 (P), 97 (P)	Creek Land	-do-	-do-	9600	RG.	-do-
29.C	-do-	S. No. 96 (P), 97 (P)	-do-	-do-	-do-	14100	-do-	-do-
30.	Majas	CTS 110, 104, 123, 117 95,96,85	37, 38 27	W-39	North of BSES Sub station.	30100	-do-	-do-
31A.	Kondivata & Mulgaon	S. No. 78 (P) 79(P), 76 (P) 80(P), 81 of Kondivata & S. No. 51 (P), 53(P), 55 (P) of Mulgaon	31-32 29-30 of Kondivata 3,3A of Mulgaon.	W-39 W-40	South of Veravali Low Level Reservoir.	65300	-do-	-do-
31B.		S. No. 83 (P), 84 (P)	32-32 of Kondivata	W-40	-do-	4100	-do-	-do-

APPENDIX - I CONTD.

K/EAST WARD

Sr. No.	Village D.P.	C.T.S. No. or S. No. in	Tikka of	Revised ree-sheet No.	Location Proposed.	Area sq.m.	Purpose of Reservation.	Existing Proposed
1	2	3	4	5	6	7	8	9
32A.	Majas & Veravali	S. No. 37, 39, 40 of Majas S. No. 9P varavali	32-31-42-43 of Majas 1 & 2 of Varavali.	W-40	South of Link Rd.	158250	-do-	-do-
32B.								
32C	Varavali	S. No 9 (p) of Varavali	2 & 2A of Varavali	W-40	South of Varavali Low Level Reservoir.	6250	R.G.	-do-
33.	Gundvali	S. No. 10A (P)	12, 19	W-42	North of German Remedy Factory.	2100	-do-	-do-
34.	-do-	242 (P)	12-20	W-42	West of Holy Spirit Convent (Tank Land)	11500	-do-	-do-
35.	Chakala	S. No. 119 (A)	2,3	W-39	Mahakali Road	5600	-do-	-do-
36.	Vileparle	CTS No. 17 (P), 16 (P)	5,7	W-42	South of K/E ward Office under Bridge.	5500	-do-	-do-
37.	-do-	CTS No. 56 (P), 59 (P)	19	W-42	Koldongri road No.1	2595	-do-	-do-
38.	-do-	289 (P)	23	W-42	Chhatrapati Shivaji Maharaj Road.	1070	-do-	-do-
39.								

APPENDIX - I CONTD.

K/EAST WARD

Sr. No.	Village D.F.	C.T.S. No. or S. No. in	Tikka of	Revised re-sheet No.	Location Proposed.	Area sq.m.	Purpose of Reservation.	Existing Proposed
1	2	3	4	5	6	7	8	9
40.	Vileparle	FP No. 188 B (P), 188 B (P), 188C 188 D, 188E	TPSV	W-45	Nanda Patkar Road	1320	R.G.	Proposed
41.	Vileparle							
42.	Chakala & Vileparle	Chakala CTS No. 538 (P), 539 (P) Vileparle, CTS No. 115 & 115/1	6 & 20	W-42	North of Sahar Road Cemetery.	2205 1325 450	Garden Pvt. H. D C	-do- Proposed Existing
43.	Chakala	S. No 107 (P)	14	W-42	Parasiwada North of Sahar Road.	2125	R.G.	Proposed
44.	-do-	CTS No. 437, 386, 387, 212 379 (P)	15-16	W-42	West of Park reservation & North of Tarun Bharat Co-op. Hsg. Society.	1875	-do-	-do-
45.	-do-	227, 214, 225, 202, 201, 212	20	W-42	South of Tarun Bharat Co. Op. Hsg. Soc.	1875	-do-	-do-
46	Sahar	S. No. 22 (p)	2	-do-	North of West of Torana Apartment Sahar Road.	1750	-do-	-do-

17

APPENDIX - I CONTD.

K/EAST WARD

Sr. No.	Village D.P.	C.T.S. No. or S. No. in	Tikka of	Revised re-sheet No.	Location Proposed.	Area sq.m.	Purpose of Reservation.	Existing Proposed
1	2	3	4	5	6	7	8	9
47.	Vi eparle	F.P. No. 108	TPSV	W-45	South of Service Industry Reservation (Hanuman Rd)	4475	-do-	-do-
48.	Kondivita	273, 274 (P)	23,16	W-43	South of J. B. Nagar Market.	4230	-do-	-do-
49.	Marol	S. No. 88 (P), 1653 (P)	48,57	W-46	On the west of Mithi River South of MV Road.	3215	-do-	-do-
50	Majas	53 (P), 54 (P)	13	W-39	On the West of Highway & south of Ajgaonkar Plot.	2185	R.G.	-do-
51.	Ismaliya	CTS No.131 (P)	9	W-39	On the east of Rly Line & in the Canara Goud Society.	5105	-do-	-do-
52.	Mogra	CTS No.40 (P)	9	W-39	On the east of Amboli Rly. Crossing & South of Hindu Friends society	1325	-do-	-do-

APPENDIX - I CONTD.

K/EAST WARD

Sr. No.	Village D.P.	C.T.S. No. or S. No. in	Tikka of	Revised ree-sheet No.	Location Proposed.	Area sq.m.	Purpose of Reservation.	Existing Proposed
1	2	3	4	5	6	7	8	9
53.	Mogra	CTS No.81 (P), 81, 84 (P)	10	W-39	On the north of Parsi Panchayat Road & West of 90' D.P. road Crossing to it.	2160 5930	R.G. S.A.S.&P.G.	-do- -do-
54.	-do-	CTS No.227, 228	11,12	W-39	West of Highway South of Mistry Aparment.	2900	R.G.	-do-
56.	Mcgra	CTS Nos. 182 (P), 184 (P)	19-20	W-39	South of Parsi Panchayat road	320 1680	R.G. P.H.	Proposed -do-
57.	Ma'as	S.no. 51 (P), 52 (P)	27	W-39	Squatters colony	2520	R.G.	-do-
58.	Mogra	382 (P), S.No.43 (P)	13,24	W-39	North of Aghadi Nagar.	2000	-do-	-do-
59.	Mogra	366 (P)	6-7	W-39	South of Post office reservation.	3200	-do-	-do-
60.	-do-	CTS No.146	18-19	W-39	North of Bhutta Highschool.	3822	-do-	-do-
61.	-do-	CTSNos.172-75,76,183,182(P)	20	W-39	North east of Krishna Dying compound.	13950	-do-	-do-

60

APPENDIX - I CONTD.

K/EAST WARD

Sr. No.	Village D.P.	C.T.S. No. or S. No. in	Tikka of	Revised re-sheet No.	Location Proposed.	Area sq.m.	Purpose of Reservation.	Existing Proposed
1	2	3	4	5	6	7	8	9
62.	Majas	S.No.49 (P), S.No.6,H. No.6 (P)	5-6 12-13	W-35	Bendrekar wadi	19700	-do-	-do-
63.	Kondivata	S.No.80 (P)	33	W-40	East of Mahakali Temple.	4000	-do-	-do-
64.	Veravali	S.No.9 (P), 19 (P)	5-6	W-40	East of Caves	32000	-do-	-do-
65.	Mulgaon	CTS No.59 (P), 67 (P), 64 (P), 65 (P), 68 (P)	11	W-39	East of Gyam Ashram.	11225	Pvt. RG	-do-
66.	-do-	CTS No.142 (P)	17	42-43	East of Telephone Exchange (Marol)	13795	-do-	-do-
67.	Prajapur	CTS Nos. 11 (P), S.No. 1 (P), 9A (P), 8 (P)	29	W-40	South of Aarey Colony	15750	R.G.	-do-
68.	Mulgaon & Kondivata	MIDC layout (Plot No.41-42)	Mulgaon 13 Kondivata 2	W-42 W-43	On the east of 90' Central road in MIDC	3300	-do-	-do-
69.	Mulgaon & Kondivata	CTS Nos.142, 144, 145, 146 of Mulgaon & CTS No.28, 31,34 (P), 35, 36 of Kondivata	Mulgaon 22&22A Kondivata 6	W-42 W-43	On the north of Kondivata Gaothan & south east of Telephone Exchange in M.I.D.C. Layout	50075	-do-	-do-

APPENDIX - I CONTD.

K/EAST WARD

Sr. No.	Village D.P.	C.T.S. No. or S. No. in	Tikka of	Revised re-sheet No.	Location Proposed.	Area sq.m.	Purpose of Reservation.	Existing Proposed
1	2	3	4	5	6	7	8	9
69A.	-do-	-do-	-	W-42	MIDC Layout	9450	ESIS.	
70.	Kondivata	S.No.21/22,23/5, 23/6, 29/0 26/2, H.No.1, CTS No.146 (P) 147 (P), 148 (P), 153, 154, 152 (P)	11,12	W-43	On the West Pipe line 90' DP road & South of YMC Nagar	5280	R.G.	roposed.
71.	-do-	S.No.28/3, CTS 135 (P), 138 (P), 137 (P) 56 (P)	12	W-43	South of MIDC boundary & We. 90' DP road	54200	R.G.	-do-
72.	-do-	S.No.12 (P)	7	W-43	East of 44 ft. MIDC road	3300	-do-	-do-
72.A		-do-	-do-		-do-	4180	Police Quarters	-do
73.	Marol	44 (P), 45 (P), 46 (P)	10-16	W-43	West of Pipeline	7900	R G	-do-
73A.		MIDC Layout	-do-		-do-	6129	Reservoir	-do-
74.								
75.	Marol	CTS No.1391, 1399-98 1397	26	W-43	East of Mukund Nagar	9265	R.G.	-do-

APPENDIX - I CONTD.

K/EAST WARD

Sr. No.	Village D P.	C.T.S. No. or S. No. in	Tikka of	Revised re-sheet No.	Location Proposed.	Area sq.m.	Purpose of Reservation.	Existing Proposed
1	2	3	4	5	6	7	8	9
76.	Marol	1354,1356,1359, 1360 (P) 1866 (P)	35-36	W-43	On the east of Church road & North of Andheri Kurla Road.	2180	-do-	-do-
77.	Chakala	S.No.-79 (P) C.T.S No.- 131 (P),130 (P)	9	W - 43	on the north of 150' Link Road and west of Charat Sing Colony Road	1450	-do-	-do-
78.	Mulgaon	S.No.41 (P)	9-10	W-42	On the west of Mahakali Road & South east of Home for the aged.	2850	-do-	-do-
79.	Gundavali	S.No.90 (P), 90A (P)	11	W-42	On the east of Suren road & North of Darpan Cinema.	2100	-do-	-do-
80.	Gundavali Chakala	S.No.24A, H.No.4, S.No.26 H.No.4	Gundavali 25	W-42	Premises of Mohan Studio Chakala 7	5350	-do-	-do-
81.	Marol	CTS No.119 (P) to 122, 130 to 132, 127 (P), 128 129, 117 (P), 124, S.No.16 17 (P), CTS No.125,128 129, 132 (P),	7,8,9	W-40 & 43	On the south side of Police Armed Head Quarters & West of Mithi river.	6000 38170	Hotel Management & Training Institute. R.G.	-do-

APPENDIX - I CONTD.

K/EAST WARD

Sr. No.	Village D.P.	C.T.S. No. or S. No. in	Tikka of	Revised ree-sheet No.	Location Proposed.	Area sq.m.	Purpose of Reservation.	Existing Proposed
1	2	3	4	5	6	7	8	9
82.	Marol	S.No.31 (P), 32 (P)	3-6	W-40	Alongwith Mithi River.		Green zone.	
82.A	Marol	CTS No.289 (P), 290 (P), 284/34, 284/31, 284/24, 284/25, 136 (P) 135 (P), 139 (P), 138 (P)	8.9	W-43 14.15	Alongwith Mithi Head Quarters.	19585	R.G. River & on the east of Police Armed	Proposed
82.B.	-do-	CTS Nos.288 (P), 322 (P), 318 (P)	20-21	W-43	-do-	1700	-do-	-do-
82C.	-do-	322 (P)	21-26	W-43	-do-	550	-do-	-do-
83.	-do-	432, 408, 395 (P), 396, 394 (P) 434 (P), 435, 436 (P), 37, 493 441, 412 (P), 411 (P), 406 (P) 399 (P), 397, 360, 438 (P), 440 (P), 441	23	W-43	On the east of Marol Maroshi Rd. & west of Borosil Glass Co.	15415	RG.	-do-
84.	-do-	S.No.25 (P), 26 (P)	25	W-42	On the West of Mithi River	9100	RG.	-do-
85.	-do-	CTS No 655 (P), 718 (P), 719 (P) 721 (P)	30	W-43	On the south of Borosil Glass Co.	4500 2500	RG. BEST Bus station.	-do-

APPENDIX - I CONTD.

K/EAST WARD

Sr. No.	Village D.P.	C.T.S. No. or S. No. in	Tikka of	Revised re-sheet No.	Location Proposed.	Area sq.m.	Purpose of Reservation.	Existing Proposed
1	2	3	4	5	6	7	8	9
86.	-do-	S.No.19 (P)	20,25 31,	W-43	On the west of Mithi river.	6540	R.G.	-do-
(b) P A R K S								
87.	Vileparle	269 to 271, 257 to 260, 262 250, 256, 263	23	W-42	Jn. of M.G. Road & 30' D.P. road.	9865	Park	-do-
88.	Chakala	CTS Nos.400 to 407,418, 232 327, 330, 323, 326, 12 (P) & 81 (P)	16,17	W-42	South of 150' D.P. road & north of 30' DP road.	24250	-do-	-do-
89.	Chakala & Sahar	Sahar, 19,250 Chakala 632	2 of Sahar	W-42 & 45 Chakala	Tank land opp.	14350	-do-	-do-
90.	Majas	CTS No. -231 (P) & 230 (P), 232 (P)	20 Chakala	W-35	in of W.E.Highway & 150 Link Road	4490	-do-	-do-
91.	Mogra	CTS No.417,418, 422,402 404, S.No.39 (P), 423 (P)	20,25 21,26	W-39	Suren Road & Eastern side of W.E. Highway.	14675	-do-	-do-
(b) PLAY GROUNDS								
92	Vileparle	418 (P), 419, 426, 526 529	36	W-42	M.G. Road	2820	Play Ground	Proposed

APPENDIX - I CONTD.

K/EAST WARD

Sr. No.	Village D.P.	C.T.S. No. or S. No. in	Tikka of	Revised re-sheet No.	Location Proposed.	Area sq.m.	Purpose of Reservation.	Existing Proposed
1	2	3	4	5	6	7	8	9
93.	Gundavali	S.No.83 (P), 82 (P)	21,22,15	W-42	Koldongari behind vijay Nagar Public Hall.	2125	-do-	-do-
94.	-do-	S.No.83 (P), CTS No.456 (P)	21,15 22	W-42	Koldongri on the East of Chandrashekar socety.	2800	-do-	-do-
95.	Vileparle	424	TPSV	W-45	Gujarathi Mandal road.	975	-do-	-do-
96.	Bapnalla	S.No.12 (P), CTS No.41 (P)	11A	W45 46	Behind Import House Airport	4060	-do-	-do-
97.	Sahar	CTS No.145 (P)	15	W-45	East of Pipeline	3420	-do-	-do-
98.	-do-	CTS No.145 (P)	20 21	W-45	East of Pipeline & south of Sahar Road.	9420	-do-	-do-
99.	-do-	CTS No.294	16, 17	W-45	South of Indian Oil Depto	7940	-do-	-do-
100.	Mogra	CTS No.68 to 75 (P)	2	W-39	East of Hindu Friends society road.	9365	-do-	-do-

APPENDIX - I CONTD.

K/EAST WARD

Sr. No.	Village D.P.	C.T.S. No. or S. No. in	Tikka of	Revised re-sheet No.	Location Proposed.	Area sq.m.	Purpose of Reservation.	Ex sting Proposed
1	2	3	4	5	6	7	8	9
101.	-do-	125 (P)	Land 1A	W-39	North of New Nagardas X Road	4000	-do-	-do-
102.	Gundavali	CTS No.399	8	W-42	East of Teligully & south of Kurla Andheri road (M.V. Road).	967	-do-	-do-
103.	-do- & Mogra	CTS No.110 of Gundavali & 148 of Mogra	Gundavali 2 Mogra 24	W-39	Bhutta School	1900	-do-	-do-
104.	Mogra	CTS No.148 (P)	24	W-39	East of Bhutta	1850	-do-	-do-
105.	-do-	CTS No.320	4	W-39	East of W.E. Highway.	11080	-do-	-do-
106.	-do-	368 (P), S.No.23 (P)	5	W-39	North of Shankar Wadi School.	3375	-do-	-do-
107.	-do-	S.No.13 (P)	14-15 22-23	W-39	East of Aghadi Nagar.	4010	-do-	-do-
108.	-do-	CTS No.367 (P), 368 (P)	7	W-39	South of post office reservaton.	3350	-do-	-do-

APPENDIX - I CONTD.

K/EAST WARD

Sr. No.	Village D.P.	C.T.S. No. or S. No. in	Tikka of	Revised ree-sheet No.	Location Proposed.	Area sq.m.	Purpose of Reservation.	Existing Proposed
1	2	3	4	5	6	7	8	9
109.	-do-	368 (P)	8	W-39	North west of Holi Spirit Hosp.	2700	-do-	-do-
110.	Majas	S.No.40 (P), CTS No.175 (P)	40	W-39	West of Model Town.	5290	P.G.	Proposed
111.	-do-	760 to 1245	26	W-39	South of Caves road.	2210	-do-	-do-
112.	Marol & Kardivita	S.No.153 (P)	13	Kordi-vata Marol 26	Near Saifee foundation colony.	3980	-do-	-do-
113.	Marol	S.No.155, H.No. 11 (P)	21	W-43	East of Saifee foundation.	4400	-do-	-do-
114.	Marol	328 (P), 838 (P), 833 (P)	36	W-43	West of Mun. school, Marol.	2700	-do-	-do-
115.	Kordivate	S.No.59 (P)	7-8	W-43	West of Pipeline & South of M.I.D.C	11200	-do-	-do-
116.	Marol	210 (P), 225 (P), 212 (P) 214 (P), 161 (P)	18	W-43	Jn. of Military Rd. & Marol Maroshi Rd.	5738	-do-	-do-

22

APPENDIX - I CONTD.

K/EAST WARD

Sr. No.	Village D.P.	C.T.S. No. or S. No. in	Tikka of	Revised ree-sheet No.	Location Proposed.	Area sq.m.	Purpose of Reservation.	Existing Proposed
1	2	3	4	5	6	7	8	9
117.	Vileparle	661 (P) 655 (P)	37-40	W-42	Mahila Mahavidyalaya	3300	-do-	-do-
118.	-do-	35 (P), 109 (P), 80 (P), 84 (P)	19-22	W-42	Koldongri Municipal Primary School	1850	-do-	-do-
119.	-do-	S.No.54. H.No.3 C.T.S. No. - 19(Pt)	5-7	W-42	East of Rly. line & South of K/E Ward Office		3865	-do- -do-
120.	Marol	348, 354 (P), 352 (P) 358 (P), & 55 (P)	13	W-42	Near Jeevan Vikas Kendra CSM Rd.	1150 1475 1985	Garden H.D. Hsopita	-do- -do-
121.		369 (P), 360 (P), 358 (P)	18	W-42	South of Kalpita Enclave	3020	P.G.	-do-
122.	Marol	F.P. No.329	TPS 11	W-45	Nariman Road	1726	-do-	-do-
123.								
124.	Chakala	CTS No. 541 (P)	4	W-42	South east of Gold Sport Fact. Parsiwada	2310	-do-	-do-
125.	-do-	CTS. No.397 (P), 338 339, 304 (P), 346 (P)	16	W-42	West of Mun. School Tarunbharat co-op. Hsg. Society.	3175	P.G.	-do-

APPENDIX - I CONTD.

K/EAST WARD

Sr. No.	Village D.F.	C.T.S. No. or S. No. in	Tikka of	Revised ree-sheet No.	Location Proposed.	Area sq.m.	Purpose of Reservation.	Existing Proposed
1	2	3	4	5	6	7	8	9
126.	Sahar & Chakala	Sahar S.No.23 (P) CTS 7 (P), 8 (P) Chakala 175 (P), 176 (P)	Sahar 3 Chakala	W-42	West of service Industry reservation at 60' DP Rd	3800	-do-	-do-
127.	Kondivata	S.No.47,48	26 26A	W-42	East of Ser Industry res tion.	4255	-do-	-do-
128.	Bandivali	269, 256 (P)	17	W-39	East of Jogesh station.	1550	P.G.	Proposed
129.	Isma iya	CTS No.60	10-11	W-39	Natwar Nagar	570	-do-	-do-
130.	Mogra	CTS No.207, 208 (P)	-do-	-do-	North of Parsi Panchayat Rd. & South of 44' DP Road.	2850	-do-	-do-
131.	-do-	CTS No.126	-do-	-do-	Jn. of Parsi Panchayat Rd & New Nagardas Rd.	1380	PH/HDH	-co-
132.	-do-	CTS No.41 (P)	1	-do-	South of Amboly Level Crossing	1320	P.G.	-do-
133.	Gundavali	S.No.4, H.No.1 (P), F.No.2 (P)	6	W-42	North of Kamgar Kalyan Kendra	6970	-do-	-co-

29

APPENDIX - I CONTD.

K/EAST WARD

Sr. No.	Village D.P.	C.T.S. No. or S. No. n	Tikka of	Revised re-sheet No.	Location Proposed.	Area sq.m.	Purpose of Reservation.	Existing Proposed
1	2	3	4	5	6	7	8	9
134.	-do-	CTS No.145	1	W-42	West of Chinoy College & New Nagardas road.	1400	-do-	-do-
135.	Majas	S.No.6 (P), H. No.6 (P) S.No.49 (P)	6	W-35	Ajgaonkar's plot	4125	-do-	-do-
136.	-do-	CTS No.203	14	W-39	North of Dhobi Ghat Caves Rd.	350	-do-	-do-
137.	-do-	760 to 1245	26	W-39	South of Caves Ghat Caves Rd.	1920	-do-	-do-
138.	-do-	CTS No.-206 (P)	25	W-39	Dalavai Compound	3000	-do-	-do-
139.	Mogra	360 (P)	5 & 6	W-39	North of Shankar wadi school.	3037	-do-	-do-
140.	-do-	375 (P), 376 (P)	-do-	-do-	South of Shankar wadi school.	6300	-do-	-do-
141.	Mulgaon	S.No.45 (P), 47 (P)	6	W-39	South of Canossa School	720	-do-	-do-
142.	Majas	MHB Layout	38/39	W-39	West of Dargah	2540	-do-	-do-

APPENDIX - I CONTD.

K/EAST WARD

Sr. No.	Village D.P.	C.T.S. No. or S. No. in	Tikka of	Revised re-se-sheet No.	Location Proposed.	Area sq.m.	Purpose of Reservation.	Existing Proposed
1	2	3	4	5	6	7	8	9
143.	-do-	-do-	46	-do-	East of Dargah	10000	-do-	-do-
144.	-do-	S.No.54, 55 (P)	29	-do-	North of 44' DP road.	2200	-do-	-do-
145.	-do-	S.No.34 (P), H.no.1 (P)	19 20	-do-	South of 150 ft. Rd. Poonam Nagar.	2700	-do-	-do-
146.	-do-	S.No.42 (P) CTS No.175 (P)	30	W-39	East of Market reservation in poonam nagar.	1275	-do-	-do-
147.	-do-	S.No.34 (P), 80 (P) CTS No.167 (P), 168 (P)	29 30	-do-	West of market reservation in poonam nagar.	1500	-do-	-do-
148.	Vyaravali & Mulgaon	S.No.8 (P), H.No.11 (P) S.No.23 (P), CTS No.17 (P) of Veravali Mulgaon CTS No.58 (P) 59 (P)	15 16	W-39	East of Gyan Ashram	7549	P.G.	Proposed
149.	Vyaravali	S.No.9 (P), H.No.1 (P) 15 of Vyaravali.	14	W-40	West of MIDC boundary.	5000	-do-	-do-
150.	Kondivata	S.No.50 (P)	8	W-43	West of Cemetery	1320	-do-	-do-

APPENDIX - I CONTD.

K/EAST WARD

Sr. No.	Village D.P.	C.T.S. No. or S. No. in	Tikka of	Revised ree-sheet No.	Location Proposed.	Area sq.m.	Purpose of Reservation.	Existing Proposed
1	2	3	4	5	6	7	8	9
151.	-do-	S.No.15 (P)	8	-do-	West of Pipeline	1115	-do-	-do-
152.	Marol	CTS No.2281 (P), 1289 (P), 1282, S.No.49 H. No. 2 (P)	16 21	-do-	Saifee Foundation colony	4340 4110	SAS & Hostel P.G.	-do- -do-
153.	-do-	1296 (P)	8	-do-	-do-	1035	P.G.	-do-
154.	Kondivita	CTS No.167	13	-do-	Mukund Nagar road.	7590	-do-	-do-
155.	Chakala	CS No.54 (P)	9	W-42	South of Nelco Factory.	1485	-do-	-do-
156.	-do-	CS No.93 (P), 105 (P), S.No.71, H.No.3	9 10	-do-	West of Sangam Cinema.	3130	-do-	-do-
157.	Mogra	429 (P)	27	W-42	Malpe Dongri school.	5500	-do-	-do-
158.	Mulgaon	241 (P)	19 19A	W-42	Holi spirit School Mahakali Rd.	16545	-do-	-do-
159.	Chakala	199 A(P)	2	W-42	Guru Nanak School.	967	-do-	-do-

APPENDIX - I CONTD.

K/EAST WARD

Sr. No.	Village D.P.	C.T.S. No. or S. No. in	Tikka of	Revised re-sheet No.	Location Proposed.	Area sq.m.	Purpose of Reservation.	Existing Proposed
1	2	3	4	5	6	7	8	9
160.	Marol	CTS No.104 (P), 101 (P)	12	W-43	South of Police Armed Head Qrts.	1200	-do-	-do-
161.	-do-	CTS No.274, 279 (P) S.No.8 (P)	13	-do-	East of Bl Nagar.	4800	-do-	-do-
162.	-do-	284/26, S.No.8, H.No.9	13	-do-	East of Bhava Nagar.	2300	-do-	-do-
163.	-do-	S.No.48, 49,50 all parts	39 40	-do-	North of Telc centre.	6430	-do-	-do-
(g) GARDNS (PROPOSED AMENITIES)								
164.	Gundavali	CTS No.440 (P), S.No. 50 (P), CTS NO.449 (P)	15, 21,22	W-42	On the East of Chandrashekhar Society & west of 60' DP rd.	630	Garden	-do-
165.	-do-	S.No.32 (P), 33 (P)	22 23	-do-	On the south of 100' DF rd (Link rd)	4200	-do-	-do-
166.	Vileparle	FP No.186	TPSV	W-45	On the south of 130' FOB (Prop) Rd. & North West of Highway & Service rd.	1450	-co-	-do-

APPENDIX - I CONTD.

K/EAST WARD

Sr. No.	Village D.P.	C.T.S. No. or S. No. n	Tikka of	Revised ree-sheet No.	Location Proposed.	Area sq.m.	Purpose of Reservation.	Existing Proposed
1	2	3	4	5	6	7	8	9
167.	Vieparle	F.P.521	T.P.s.V.	W-45	At the jn. of Service road & Azad road near Subway.	335	Garden	Proposed
168.	-do-	FP No.483, 489	TPS V	W-45	Jn. of Dayaldas road & subway.	3328	-do-	-do-
169.	Sahar	327	16,17 22	W-45	On the east of Sahar Church & south of 90' DP rd.	16000	-do-	-do-
170.	Gundavali	CTS No.76	10	W-42	On the west of Highway & East of Kamgar Kalyan Kendra.	4165	-do-	-do-
171.	Kondivata	Tank land	11	W-42	On the south of MIDC & in the Kondivata Gaothan Tank land.	2100	-do-	-do-
172.	Marol	132, 967 (P), 953 (P)	27	W-43	On the east of Marol Church & West of Marol Maroshi Rd, (Tank land)	19070	-do-	-do-

APPENDIX - I CONTD.

K/EAST WARD

Sr. No.	Village D.P.	C.T.S. No. or S No. in	Tikka of	Revised re-sheet No.	Location Proposed.	Area sq.m.	Purpose of Reservation.	Existing Proposed
1	2	3	4	5	6	7	8	9
173.	Vileparle	CTS No.53 (P)	6	W-42	Koldongri Rd No.1 & east of 60' D.P. rd.	755	-do-	-do-
174.	-do-	55	19	W-42	On the south of No.2 & south of 120' Link Rd.	3600	-do-	-do-
175.	-do-	318 (P), 309,300 299, 317 (P), 301 316 (P)	18 & 20	W-42	On the south of Kalpita Enclave East of Rly. line	2640	-do-	-do-
176.	-do-	463, 464 & 466	37,40	W-42	On the north of Mahila Mahavidyalata	4050	-do-	-do-
177.	-do-	FP No.112	TPSII	W-45	Malviya rd.	1092	-do-	-do-
178.								
179.					-do-			
180.								
181.	-do-	FP No.524	TPSV	W-45	On the north of subway road & east of Azad rd.	1204	-do-	-do-

APPENDIX - I CONTD.

K/EAST WARD

Sr. No.	Village D.P.	C.T.S. No. or S. No. in	Tikka of	Revised ree-sheet No.	Location Proposed.	Area sq.m.	Purpose of Reservation.	Existing Proposed
1	2	3	4	5	6	7	8	9
182.	Sahar	15	10,15	W-45	On the west of Pipeline & east of 90' airport rd. starting from M.V. Road	2460	-do-	-do-
183.	Marol	Tank land 116, 142 (P), 142 (F)	36-45	W-43	On the south of M.V. Rd & East of 90' Airport Rd. Starting from M.V. Rd.	8400	-do-	-do-
184.	Gundvali	S.No.74 (P), CTS No.188 (P).	9	W-42	Azad rd on east of market reservation.	200	-do-	-do-
185.	Andheri	CTS NO. 679 & 680 of Andheri Village	46	W-42	On the South East of BEST Stn. and West of Police Hsg.	532	Garden	Proposed
186.	Majas	CTS No. 124, Tank land	14	W-39	On the east of W.E. Highway & North of Caves. Rd.	3700	-do-	-do-
187.	Mogra	374 (P)	14	W-39	Opp. Nirman Nagar & South of Shankar Wadi Mun. P. School.	1600	-do-	-do-

APPENDIX - I CONTD.

K/EAST WARD

Sr. No.	Village D.P.	C.T.S. No. or S. No. in	Tikka of	Revised ree-sheet No.	Location Proposed.	Area sq.m.	Purpose of Reservation.	Existing Proposed
1	2	3	4	5	6	7	8	9
188.	Mogra	382 (P)	14	W-39	On the south West of Nirman Nagar at Jitamata Road.	385	-do-	-do-
189.	Majas	S. No. 34, CTS 167	18-19	W-39	On the South of 150' Link Road & West of 60' Poonam Nagar road.	25600	-do-	-do-
190.	-do-	S. No.81 (P) 54 (P) 42(P)	28-29 30	W-39	North N. H. Boundary & Saphale Industry	54560	-do-	-do-
191.	-do-	S. No. 42 (P), CTS 173, (P), 1931 (P)	30-31	W-39	North N. H. boundary Poonam Nagar 60 Road & South West of Market Reservation.	9675	-do-	-do-
192.	Mulgaon	CTS No. 96. (P)	15-16 20-21	W-39	On the southern Side of MIDC & East of Gyan Ashram	1650	-do-	-do-

APPENDIX - I CONTD.

K/EAST WARD

Sr No.	Village D.P.	C.T.S. No. or S. No. in	Tikka of	Revised re-se-sheet No.	Location Proposed.	Area sq.m.	Purpose of Reservation.	Existing Proposed
1	2	3	4	5	6	7	8	9
193.	Kodivata	Kondivata 222 (p) Mulgaon Cts No. 179 (P) 181 (Pt)	Kondivata 10 Mulgaon 25	W-42	On the east of Vazir Glass Co. and south of MIDC (Tank land)	6000 4000	Garden Law Court & Court Hsg.	-do-
194.	Marol	CTS NO. 1189, 966 (P)	21-27	W-43	Behind Marol Church Roads Market on the west of Marol Gaothan	3075	Garden	-do-
195.	Marol	CTS No. 1311 (P) 152 (P)	27	W-43	On the east of Marol Church North of Tank land.	810	Garden	-do-
196.	Kondivata	CTS No. 105	11	W-43	Extn. to Garden Reservation.	190	Garden Extension	-do-
196A.								
193B.	Gundavli	S. No. 84 (P), CTS No. 329 (P)	16	W-42	South of Parsi Panchayat Layout 120' Andheri Ghatkopar Link Road.	1450	Garden	-do-

APPENDIX - I CONTD.

K/EAST WARD

Sr. No.	Village D.P.	C.T.S. No. or S. No. in	Tikka of	Revised re-sheet No.	Location Proposed.	Area sq.m.	Purpose of Reservation.	Existing Proposed
1	2	3	4	5	6	7	8	9
196 C		Vileparel	TPS FP 1,2					
196 D Majas		102 (P), 99 (P),	24	W-39	On the West of W.E. Highway, S.K. Patil Udyan, Dalvi Compd.	1500-do-	-dc-	
2. Education (Existing Ament es) MAP & PAP								
197.	Vileparle	529	36	W-42	M.G. Road	2340	MΔP	Existing
198	-do-	CTS NO. 80 (P)	22	W-42	Koldongri Mun. Primary School	5075	-do-	-do-
199.	-do-	CTS 787	41,42 53-54		Parle Tilak Primary School	3324	PΔP	-do-
200.	-do-	CTS No. 611	40	W-42	Paranjpe Schme A- behind Laxmi Cinema.	312	PΔP	-do-
201.	-do	CTS NO. 762	41,42 53,54	W-45	Parle Balvidya Mandir on the east of Parle Tilak Vidyalyaya	680	PΔP	-do-
202.	-do-	CTS No. 656	37,40	W-45	On the South of Mahila Mahavidyalay	650	PΔP	-do-

APPENDIX - I CONTD.

K/EAST WARD

Sr. No.	Village D.P.	C.T.S. No. or S. No. in	Tikka of	Revised re-sheet No.	Location Proposed.	Area sq.m.	Purpose of Reservation.	Existing Proposed
1	2	3	4	5	6	7	8	9
203.	-do-	FP NO. 71	TPSI	W-45	On the south of Chittranjan Rd. & east of M. G. Road	4151	MΔP	-do-
204.	-do-	FP NO. 310 (P)	TPSII	W-45	Dixit Road	4151	MΔP	-do-
205	-do-	FP No. 257 (P)	TPSV	W-45	Behind Harijan Quarters.	1000	PΔP	-do-
206	Chakala	CTS No. 318 (P)	16	W-42	South of 30' DP Rd. Tarun Bharat Co-op. Hsg. Society	1980	MΔP	-do-
207.	Kondivata	CTS No. 250	15	W-32	Poddar Primary School, MV Road.	2025	PΔP	-do-
208.	Ismaliya	CTS No. 165	5	W-32	Saraswat Colony	2325	MΔP	-do-
209.	Mogra	CTS No. 148 (P)	23	W-39	East of Bhutta School.	2000	MΔP	-do-
210.	Gundavali	CTS No. 40	5	W-42	Suren Primary School.	1010	MΔP	-DO-
211.	-do-	CTS NO. 388, 386 (P)	16	W-42	East of Scindia Compound	3235	MΔP	-DO-

APPENDIX - I CONTD.

K/EAST WARD

Sr. No.	Village D.P.	C.T.S. No. or S. No. in	Tikka of	Revised ree-sheet No.	Location Proposed.	Area sq.m.	Purpose of Reservation.	Existing Proposed
1	2	3	4	5	6	7	8	9
212.	Andheri	CTS NO. 653	34	W-42	Behind Nagardas Park Bldg.	580	PΔP	-do-
213.	Gundavai	125 (P)	1	W-39	Opp. Chinoy College	300	MΔP	-do-
214.	Majas	CTS No .86	25	W-39	Gujarathi Mun. School	3250	MΔP	-do-
215.	-do-	CTS No 201 of Majas village	14	W-39	Caves road Urdu School.	250	MΔP	-do-
216.	-do-	CTS No. 214 (P), 215 (P)	14	W-39	Cave Road Mun. Hindi School.	600	MΔP	-do-
217.	-do-	CTS No. 77 to 83	35	W-39	Squatters colony West of market.	2350	MΔP PG & MO	-do-
218.	Mogra	CTS No. 327 (Part)	4	W-39	West of Infant Jesus School.	1470	MΔP	Existing
219.	-do-	CTS No 357(P), 356 (P) 362 (P)	5	W-39	Shankar Wadi MPI School.	3735	-do-	-do-
220.	Mulgaon	S. No 21. (P), 38 (P) CTS No. 254 (P), 258 (P) 259 (P)	14	W-42	In. of Mahakali Road & Central Road MIDC.	1320	W.C.	-do-

APPENDIX - I CONTD.

K/EAST WARD

Sr. No.	Village D.P.	C.T.S. No. or S. No. in	Tikka of	Revised re-sheet No.	Location Proposed.	Area sq.m.	Purpose of Reservation.	Existing Proposed
1	2	3	4	5	6	7	8	9
221.	Marol	CTS No. 825 (P), 826 (P) 827 (P)	36	W-43	South of Makwana Nagar.	3415	MΔP	-do-
222.	-do-	1280 (P), 1282 (P)	21	W-43	Saifee Foundation	2700	PΔP	-do-
223.	-do-	879	22	W-43	Marol Gaothan	120	MΔP	-do-
224.	-do-	1024	28	W-43	-do-	150	MΔP	-do-
225.	Mogra	429 (P), 368 (P)	27	W-39	Malpadongri School	370	MΔP	-do-
226.	Marol	S. No. 48 (P), 47 (P)	49	W-43	Saug Baug Municipal School	1150	MΔP	-do-
(a) Municipal School (Proposed Amenities)								
227.	Vileparle	FP No. 423	TPSV	W-45	Gujarathi Mandal road,	1275	MΔP	Proposed
228.	Sahar & Kondivata	Shar CTS NO. 1 (P), Kondivata CTS No. 342 (P)	1	W-42 W-45	East of Bamanwada road,	3660	MΔP	-do-
229.	Sahar	CTS NO. 145 A (P)	16-17	W-45	North of Tank land	3276	MΔP	-do-
230.	Vilaparle	FP. No. 140	TPSV	W-45	Malviya road Extn.	1481	MΔP	-do-

APPENDIX - I CONTD.

Sr. No.	Village D.P.	C.T.S. No. or S. No. in	Tikka of	Revised ree-sheet No.	Location Proposed.	Area sq.m.	Purpose of Reservation.	Existing Proposed
1	2	3	4	5	6	7	8	9
231.	Sahar	S. No.118 (P), CTS 130	20-21	W-45	Opp. CPWD Qrts	3470	MΔP	-do-
232	Mogra	CTS No. 250	2	W-39	Near Natwar Nagar Road No.5	3935	MΔP	-do-
233.	-do-	CTS No. 125 (P)	Land 1A	W-	Behind Wilson Pen co.	5160	MΔP	-do-
234.	Mogra	S. No. 37 (P)	23-22	W-39	East of Aghadi Nagar (Sher-E) Punjab Hsg. Sc ity)	2150	MΔP	-do-
235.	-do-	367, 68 (P)	7	W-39	South of Post Office Reservation in MBB.	2080	MΔP	-do-
236.	-do-	42 (P), CTS No. 175 (P) S. No. 49 (P), CTS 56 (P) 137 (P).	40	W-39	Model Town	5400	MΔP	-do-
237	Kondivata	S. No.S. No. 34 (P), S. No 49 (P)7 CTS No. 56 (P), 137 (P)		W-43	South Of MIDC Boundary	1800	MΔP	-do-
238.	-dc-	S. No. 95 (P)	13	W-43	South of Saifee Foundation.	3100	MΔP	-do-
239.	Mogra	S. No. 37 (P), CTS No. 421 (P) 26 98 (P), 411 (P), 414 (P), 423 (P)		W-39	LIC Colony Western side	2730	SΔS	-do-

APPENDIX - I CONTD.

K/EAST WARD

Sr. No.	Village D.P.	C.T.S. No. or S. No. in	Tikka of	Revised ree-sheet No.	Location Proposed.	Area sq.m.	Purpose of Reservation.	Existing Proposed
1	2	3	4	5	6	7	8	9
240	Marol	CTS No. 1209 (P), 211 (P) 210 (P)	18	W-43	Jn. of Military Rd. & M. M. Road.	3000	MΔP	-do-
241.	Vileparle	S. No. 34 H. No. 1984 (P)	5-7	W-42	South of K/E Ward office	4140	MΔP	-do-
242.	-DO-	359	18	W-42	South of Kalpita Encla ve abutting to 44' DP Road,	2320	MΔP	-do-
243.	Kondivata	S. no. 50	26-26A	W-42	60, wide Bamapuri Road.	2700	MΔP	-do-
244.	Bandivali	255, 259 (P)	7	W-39	Navalkar's plot near Joeshwari Station.	2170	MΔP	-do-
245.	Ismaliya	CTS NO. 59	6	W-39	Natwar Nagar	1350	MΔP	-do-
246.	Mogra.	210 (P), 216 (P)	6	W-39	South of D.P Road . west of 60' D. P. Rd	4750	MΔP	-co-
247.	Majas	CTS No.5' (P), S No. 4 (P), 6 (P), H. No. 6 (P), S. No. 49 (P)	13 & 6	W-45	Ajgaonkar's Plot	4050	MΔP	-do-

APPENDIX - I CONTD.

K/EAST WARD

Sr. No.	Village D.P.	C.T.S. No. or S. No. in	Tikka of	Revised re-sheet No.	Location Proposed.	Area sq.m.	Purpose of Reservation.	Existing Proposed
1	2	3	4	5	6	7	8	9
248.	-do-	177 (P)	14	W-39	South of Maharaj Bhavan.	1225	MΔP	-do-
249.	-do-	CTS No. 368	16	W-39	South Link Rd. (150)	2175	MΔP	-do-
250	-do-	S. No. 55 (P), CTS No. 169 (P)	18	W-39	North of 44' D.P. road (Poonam Nagar)	2110	SΔS	-do-
251.	Majas	S. No. 34 (P), 80 (P), CTS No. 167 (P), 168 (P)	30	W-39 road	South of 44' D. P. (Poonan Nagar)	2350	MΔP	-do-
252.	-do-	S. No. 42 (P), CTS No. 175 (P)	30	W-39	South of Market reservation.	1300	MΔP	-do-
253.	-do-	Majas MHB Layout	37	W-39	Jijamata Marg	2100	MΔP	-do-
254.	Vyaravali & Mulgaon	S. No. 9. H. No. 1 (P) CTS NO 23(P) of Vyaravali CTS NO. 58 (P), 68 (P) 67 (P) of Mulgaon	15	W-40	East of Gyan Ashram	5715	MΔP	-do-

APPENDIX - I CONTD.

K/EAST WARD

Sr. No.	Village D.P.	C.T.S. No. or S. No. in	Tikka of	Revised ree-sheet No.	Location Proposed.	Area sq.m.	Purpose of Reservation.	Existing Proposed
1	2	3	4	5	6	7	8	9
255.	Mulgaon	68 (P), 59 (P)	11 & 12	W-39	North MIDC Boundary.	4550	MΔP	-do-
256.	Chakala	CS. NO.54 A (P), 118 (P) 9	22-27	W-42	South of Nelco	2335	MΔP	-do-
257.	Gundavali	CTS No. 429 (P)	22-27	W-39	Malpa Dongri School.	3770	MΔP	-do-
258.	Marol	276, 279 (P), 277 (P)	13-19	W-43	East of Bhavani Nagar.	2015	MΔP	-do-
2 (B) SECODARY SCHOOL (EXISTING AMENITIES)								
259.	Vileparle	CTS NO. 785	41-42 53-52	W-45	Hanuman Road & Parke Tilka Vicyalaya	3815	SΔS	Existing
260.	-do-	CTS No. 768	41-42 53-52	W-45	North of Hanuman Road & East Parle Tilak Vidyalaya.	820	SΔS	-do-
261.	-do-	CTS No. 21 (P)	40	W-45	Hanuman Cross Rd. No.2, Shivaji Vidyalaya.	575	SΔS	-do-
262.	-do-	655 (P)	37-40	W-42	Mahila Junior College.	3500	SΔS	-do-

APPENDIX - I CONTD.

K/EAST WARD

Sr. No.	Village D.P.	C.T.S. No. or S. No. in	Tikka of	Revised ree-sheet No.	Location Proposed.	Area sq.m.	Purpose of Reservation.	Existing Proposed
1	2	3	4	5	6	7	8	9
263.	-do-	424, 425	36-23	W-42	Bhutta School M.g. Road.	1550	SΔS	-do-
264.	-do-	Vijay Nagar Layout	7	W-42	Vijay Nagar Secondary School Sahar Road, Paranjape School	2450	SΔS	-do-
265.	-co-	F.P. No. 50 of TPS I & FP NO. 16 of TPS II	TPS I & II	W-45	Ruia High School	2880	SΔS	-do-
266.	-co-	FP No. 61	TPS I	W-45	-do-	793	SΔS	-do-
267.	-do-	FP No.17	TPSV	W-45	Pratharna Samaj High School.	1860	SΔS	-do-
268.	-dc-	FP No. 257	TPSV	W-45	Shradhanad road	2840	SΔS	-do-
269.	Chakala	S. No. 124 (P), CTS 45	18-21	W-42	Bamanpuri Road,	2840	SΔS	-do-
270.	Sahar	CTS No. 251	15	W-42	Poddar High School J. B. Nagar.	1560	SΔS	-do-
271.	Sahar	CTS No. 250	15-21	W-45	Sahar Church High School.	5380	SΔS	-do-

APPENDIX - I CONTD.

K/EAST WARD

Sr. No.	Village D.P.	C.T.S. No. or S. No. in	Tikka of	Revised re-sheet No.	Location Proposed.	Area sq.m.	Purpose of Reservation.	Existing Proposed
1	2	3	4	5	6	7	8	9
272.	Ismailiya	CTS No.92	9	W-39	Hindu Friends Socety.	450	SΔS	-do-
273.	-do-	CTS No.45(P)	10	W-39	Natwar Nagar	735	SΔS	-do-
274.	-do-	S. No. 1/36	2	W-39	Ismail Yusuf High School Caves Road.	4900	SΔS	-do-
275.	Gundavali	CTS No. 109	2	W-39	Butta High School Nagardas X Road.	2100	SΔS	-do-
276.	Gundavali	C.T.S. NO. 104	1	W-42	Verma Nagar High School.	1980	SΔS	Existing
277.	Majas	CTS. No. 49 (P)	5-6	W-35	Asmita Secondary School.	370	SΔS	-do-
278.(A)	Mulgaon	S. No. 85, 86 (P), CTS No. 17 (P)	6-16	W-39	St. Dominic Shool.	14525	SΔS	-do-
278 (E)		S. No. 47(pr)	6-7-16	W-39	Carmosian High School	370	SΔS	-do-
279.	Mogra	327 (P)	4	W-39	Infant Jesus School.	1165	SΔS	-do-

APPENDIX - I CONTD.

K/EAST WARD

Sr. No.	Village D.P.	C.T.S. No. or S. No. in	Tikka of	Revised re-sheet No.	Location Proposed.	Area sq.m.	Purpose of Reservation.	Existing Proposed
1	2	3	4	5	6	7	8	9
280.	Marol	CTSNos. 1306/5, S.No. 951/6 (P).	26-27	W-43	Marol Church Rd.	3814	SΔS	-do-
281.	-do-	CTS No. 180	17-18	W-43	North of Mukund Nagar.	1160	SΔS	-do-
282.	-do-	CTS No. 1233	22	W-43	Marol Gaothan	900	SΔS	-do-
283.	Chakala	CTS No. 103, 101, 100, 94, 81	9-10	W-42	West of Sangam Cinema.	12500	SΔS	-do-
284.	Gundavali	C.S. No. 295	19	W-42	Holi Family Church School.	1470	SΔS	-do-
285	-do-	CTS No. 278	19	W-42	Gurunank High School 700 School.		SΔS	-do-
(B) Secondary School (Proposed Amenities)								
286.	Gundavali	S. No. 83 (P) 34, 35(P)	15-21	W-42	East of Chandra Shekhar Society.	2425	SΔS	Proposed
287.	Sahar	CTS No. 145 (P)	10-15	W-45	East of Pipeline	3713	SΔS	-do-

APPENDIX - I CONTD.

K/EAST WARD

Sr. No.	Village D.P.	C.T.S. No. or S. No. in	Tikka of	Revised ree-sheet No.	Location Proposed.	Area sq.m.	Purpose of Reservation.	Existing Proposed
1	2	3	4	5	6	7	8	9
288.	Gundavali	S. No. 91 (P), CTS No. 78 (P)	3	W-42	West of Highway North of Kamgar Kalyan Kendra.	4095	SΔS	-do-
289.	Majas	S. No.55 (P)	28	W-39	South of Sapole Industries.	3600	SΔS	-do-
290.	Mogra	CTS No. 360 (F)	8	W-39	Sher-E-Punjab Society	3450	SΔS	-do-
291.	Marol	1227, 1225 (P) 1263 (P), 1265 (P) 1229 (P)	22	W-43	South of Hospital Reservation.	3600	SΔS	Proposed
292.	Vileparle	37,40	37,40	W-42	Extn. to J. College	2160	SΔS	-do-
293.	Vileparle	266	23, 36	W-42	Near Butta School	440	SΔS	-do-
294.								
295.	Chakala	CTS NO. 541 (P)	14	W-42	North Of Parsiwada	2850	SΔS	-do-
296.	Sahar	Cts No. 10,11,12 S. No. 23 - D	3	W-42	South of Service Industry.	2450	Dispensary	-do-
297.	Bapnala	S. No. 12 (P), CTS No. 41(P)	11-A	W-45, 6	East of Pipeline	4482	Play ground	-do-

APPENDIX - I CONTD.

K/EAST WARD

Sr No.	Village D.P.	C.T.S. No. or S. No. in	Tikka of	Revised ree-sheet No.	Location Proposed.	Area sq.m.	Purpose of Reservation.	Existing Proposed
1	2	3	4	5	6	7	8	9
298.	Mogra	S. No. 41 (P) 9 B	9 & 9 B	W-39	CTS No. 40, Amboli Level Crossing.	2280	SΔS	-do-
299.	Majas	CTS No. 49 (P)	5,6	W-35	Asmita Secondary School.	810	SΔS	-do-
300.	Majas	S. No. 34 (P)	19 20	W-39	Poonam Nagar	2700	SΔS	-do-
301.	-do-	Majas MHB layout	38	W-39	West of Dargah	2540	SΔS	-do-
302.	Majas	A/14, Majas MHB Layout	6	W-39	North of Dargah	1165	SΔS	-do-
303.	Mogra	371 (P), S. No 27 (P)	6	W-39	East of Shankar Wadi School.	3900	SΔS	-do-
304.	Mulgaon	S. NO. 47 (P) CTS 22	6	W-39	Extn. to Cannosa School	850	SΔS	-do-
305.	Vyaravali & Mulgaon	CTS NO 19 of Vyaravali & S. No. 58. (P) Mulgaon.	Varaval14 Mulgaon 11	W-39	East of Gyansharm	5110	SΔS	-do-
306.	Mulgaon & Chakala	Mulgaon 241 (F) S. No. 19 (A) of Chakala	19, 10-A	W-42	Opp. Helco Factory	7625	SΔS	-do-

APPENDIX - I CONTD.

K/EAST WARD

Sr. No.	Village D.P.	C.T.S. No. or S. No. in	Tikka of	Revised ree-sheet No.	Location Proposed.	Area sq.m.	Purpose of Reservation.	Existing Proposed
1	2	3	4	5	6	7	8	9
307.	Marcl	C. No. 104 (P), 104/1 (P)	12	W-43 W-43	South of Police Head Quarters	200 1500	SΔS W.C.	-do-
308.	Marcl	S. No. 8/12, CTS No. 280, 283	13	W-42	East of Bhavani Nagar	3825	SΔS	Proposed
309.	Chakala	S. No. 8/12, CTS No. 280, 283	2	W-42	Gurunanak School	696	SΔS	-do-
309A.	Majas	375 (P)		W-35	Bandivali School	250	SΔS	-DO-
2 (C) COLLEGE & POLYTECHICS : (EXISTING ON SITE)								
310.	Vileparle	FP No. 281	TPS II	W-45	Parle Collage	9900	College	Existing
311.	-do-	FP No. 284	-do-	W-45	Dahanukar College	2975	-do-	-do-
312.	Ismaliya	CS. No.1 (P)	7.8	W-39	Ismail Yusuf College.	135000	-do-	-do-
313.	Gundavali	104	1,2	W-42	Chinoy College	14970	-do-	-do-

APPENDIX - I CONTD.

K/EAST WARD

Sr. No.	Village D.P.	C.T.S. No. or S. No. in	Tikka of	Revised re-sheet No.	Location Proposed.	Area sq.m.	Purpose of Reservation.	Existing Proposed
1	2	3	4	5	6	7	8	9

(D) TECHNICAL & OTHERS INSTITUTIONS :

NIL

(3) MEDICAL RELIEF

(A) GENERAL HOSPITALS & SPECIFIC HOSPITALS (EXISTING ON SITE)

314.	Marol	CTS No. 1405 (Pt.)	43,44	W-43	Yellow Fever Hospital	5750	Hospital	Existing
315.	Mulgaon	S.No. 49 (P)	1 & 2	W-39	Holy spirit Hospital	42075	-do	-do-
316.	-do-	S. No. 4 (P), 64 (P)	15 16	W-42	ESIS Hospital	41530	-do-	-do-
Proposed Amenities								
317.	Marol	S. No. 157, 161, 181 (P) 150 (P), 164 (P)	16-17	W-43	Marol Hospital Marol Maroshi Road	(5000) 94636	BestBus Depot Hospital	Proposed
318.	Majas	S. No. 6 H. No. 6 (P) S. No. 4 (P) CTS No. 50 (P), 51 (P) S. No. 49 (P)	6-13	W-35	Adgaonkar's plot Sandrekar Wadi	24984	Hospital	-do-

APPENDIX - I CONTD.

K/EAST WARD

Sr. No.	Village D.P.	C.T.S. No. or S. No. in	Tikka of	Revised re-sheet No.	Location Proposed.	Area sq.m.	Purpose of Reservation.	Existing Proposed
1	2	3	4	5	6	7	8	9
(B) MATERNITY HOME : (Existing on site)								
319.	Vileparle	713	37,40	W-42	Opp. Mahalia Mahavidyalaya	925	MH	Existing
Proposed Amenities								
320.	Vileparle	FP No. 398	TPS V	W-45	South of Harijan Quarters	1610	MH+	Proposed
321.	-do-	S. No. 26, CTS No. 183	5	W-43	West of Pipeline	3248	MH+	-do-
322.	Gundavali	89 (P), 6/79	3	W-42	North of Kamgar Kalyan Kendra	4850	-do-	-do-
323.	Majas	134 (P), 135 (P)	27	W-39	Squatters Colony	3000	-do-	-do-
324.	Kandivita	CTS No. 158 (P), 159 (P)	12	W-43	Mukund Nagar Rd.	3025	-do-	-do-
326.	Mogra	182 (P), 186 (P)	19,20	W-39	60 D.P. Road	2135	+MH+	-do-
327.	Majas	Majas MHB Layout	29,40	W-39	MHB Layout 60'DP Road on the north of Dargah	1395	MH+	-do-
328.	Mulgaon	CIS No. 7 CTS No. 24(P)	20	W-39/40	North of MIDC Boundary	4430	MHD+	-do-

APPENDIX - I CONTD.

K/EAST WARD

Sr. No.	Village D.P.	C.T.S. No. or S. No. in	Tikka of	Revised re-sheet No.	Location Proposed.	Area sq.m.	Purpose of Reservation.	Existing Proposed
1	2	3	4	5	6	7	8	9
329.	Marol	CTS NO. 135 (P) S. No. 17 (P)	14-15	W-43	West of Mithi River.	3630	MH+	-do-
(C) Dispensary (Existing on site)								
330.	Vileparle	CTS 713	37,40	W-42	Opp. Mahila Maha Vidyalaya.	925	D+	Existing
331.	-do-	CTS 80 (P)	22	W-42	Opp. Bahar Cinema	525	D+	-do-
332.	Gundavali	CTS No. 174	9	W-42	Azad Road	412	D+	-do-
333.	Majas	CTS No. 60	25	W-59	Dalvai Compound	600	MHD+	-do-
334.	Marol	840	28	W-43	South of Tank Land Marol.	960	D+	-do-
335	-do-	1189 (P)	27	W-43	Opp. Church Road	1500	D+	-do-
Proposed Amenities								
336.	Sahar	C. T .S. No. 183 (P) 184 (P)	5	W-42	West of Pipeline	670	D+	Proposed
337.	Mog'a	240 (P), 241 (P) 244 (P), 245 (P)	11	W-39	Road No.5, Natwar Nagar.	2025	+D	Proposed

APPENDIX - I CONTD.

K/EAST WARD

Sr. No.	Village D.P.	C.T.S. No. or S. No. in	Tikka of	Revised re-sheet No.	Location Proposed.	Area sq.m.	Purpose of Reservation.	Existing Proposed
1	2	3	4	5	6	7	8	9
338.	Gundavali	89 (P), 6179	3	W-42	North of Kamgar Kalyan Kendra	670	D+	-co-
339.	Majas	S. No 51 (P), CTS 134,135 (P)	27	W-39	Squatters Colony	650	D+	-do-
340.	Kondivata	162, 160, 163, 158	12	W-43	Mukund Nay Raod	670	D+	-do-
341.	Vileparle	240 (P), 252 (P)	23	W-42	M. G. Road,	620	D+ (Ayurvedic)	-do-
342.	Mogra	CTS No. 192 (P)	17	W-39	Opp. Wilson Pen Factory.	850	D+	-do-
343								
344.	Vile Parle	F. P. No. 321	TPS II	W-45	At the Jn. of Nehru road & Dixit Road.	816	D+	-do-
345.	Chakala	CTS No. 266 (P)	21	W-42	In Tarun Bharat Co-op Hsg. Society.	450	D+	-do-
346.	Kandivata	S. No. 41 (P), CTS No. 337, 339 (P) 338 (P), 340	23	W-42	On the west of Pipeline south of Jb Nagar.	1500	D-	-do-

APPENDIX - I CONTD.

K/EAST WARD

Sr. No.	Village D.P.	C.T.S. No. or S. No. in	Tikka of	Revised re-sheet No.	Location Proposed.	Area sq.m.	Purpose of Reservation.	Existing Proposed
1	2	3	4	5	6	7	8	9
347.	Majas	S. No.34 (P)	29-30	W-39	On the east of Sapale Ind. Poonam Nagar	1100	D+	-do-
348.	Vyaravali	S. No. 7. CTS. No. 24 (P)	20	W-39/40	On the north side of MIDC Boundary.	670	D+	-do-
349.	Gurdavali	CTS NO. 128	11	W-42	On the West of Mahal Industrial Estate & East of W.E. Highway.	950	D+	-dc-
350.	Marol	S. No. 17 (P)	14 15	W-43	on the west of Mithi River.	670	D+	-do-
	(D)	Health Centre	-	Nil				
	(E)	Sanitoriums	-	Nil				
	(F)	Leporasy Home	-	Nil				
(4)	Market (Existing on site)							
351.	Vileparle	S. No. 34 (P)	5 & 7	W-42	On the south of K/E ward office.	2360	R.M.	Existing
352.	-do-	F.P. No 1	TPS I	W-45	Tejpal Road	4332	Market & Theatre	-dc-

APPENDIX - I CONTD.

K/EAST WARD

Sr. No.	Village D.P	C.T.S. No. or S. No. in	Tikka of	Revised ree-sheet No.	Location Proposed.	Area sq.m.	Purpose of Reservation.	Existing Proposed
1	2	3	4	5	6	7	8	9
353.	Chakala	CTS No. 264 (P), 263 (P), 262 (P), 228 (P).	20 21	W-42	Tarun Bharat Co-Op, Hsg. Socety.	2560	MRM	Existing
354.	Kondivata	270	16	W-43	J. B. Nagar, M.V. Road	8015	Open Mur. Market.	Existing
355.	Bandivai	256	7	W-49	Near Jogeshwary Rly. Stn. (E).	2925	MFM	Existing
356.	Majas	S. No. 51 (P)	25	W-39	Squatters Colony	1400	MRM	Existing
357.	Marol	CTS NO. 119 (P)	21	W-43	Marol Church Road	1000	MFM	-dc-

PROPOSED AMENITIES

M.R.M. & M i.e. municipal Retail market & municipal Housing)

358.	KONDIVATA		S. NO. 49, CTS NO.	26	W-42	44' DP RD. OF Tarun
5000	MRM & M	Proposed				
		457, 467, 468 (P)			Bharat layout on the north S.I. reservation.	
359.	Majas	MHB Layout	38	W-39	On the east of Potters Colony.	5200
						MRM & M
						Proposed

APPENDIX - I CONTD.

K/EAST WARD

Sr. No.	Village D.P.	C.T.S. No. or S. No. in	Tikka of	Revised re-sheet No.	Location Proposed.	Area sq.m.	Purpose of Reservation.	Existing Proposed
1	2	3	4	5	6	7	8	9
360.	Vileparle	FP No. 228	TPS V	W-45	Nariman road	1732	MRM & Mun. Staff Crts.	-do-
361.	Marol	CTS NO. 1199	21	W-43	Marol Church Rd.	1585	R.M.	-do-
362.	-do-	CTS No. 300 (P), 302 (P) 303 (P)	20	W-43	Military road	1805	R.M.	-do-
363.	Vileparle	218 (P), 211 (P) 210 (P)	18 19	W-42	At the Jn. of Mg Road & Sahar Rd.	1470	MRM & M	-do-
365.	Bandivali	257 (P), 255 (P)	7	W-39	Near Jogeshwari (E) Stn.	2040	Extn. to Existing Mkt.	Proposec
366.	Mogra	201 (P), 212 (P), 213 (P)	10 11	W-39	East of 90' DP. Rd.	2200	R.M.	-do-
367.	Gundavali	125 (P)	1	W-42	Behind Mun. Primary School at Old Nagardas Road,	3425	R.M.	-do-
368.	Mogra	381 (P), 384 (pt)	13	W-39	On the south of Potters Colony Jijamata Road.	2000	RM & M	Proposec

APPENDIX - I CONTD.

K/EAST WARD

Sr. No.	Village D.P.	C.T.S. No. or S. No. in	Tikka of	Revised re-sheet No.	Location Proposed.	Area sq.m.	Purpose of Reservation.	Existing Proposed
1	2	3	4	5	6	7	8	9
369.	Majas	S. No. 42 (P)	30	W-39/40	On the East of Saphale Industries (Poonam Nagar)	3600	MF&M	Proposed
370.	Vyarevali	S. No. 6 (P), CTS 1 (P), 15 (P), 14(P)	15	W-40	On the East of Gyan Ashram	2976	R.M	-do-
371.	Kondivata	S. NO. 57 (P), 58 (P) 56 (P)	6-11	W-43	On the north east of Kondivata Gaon.	4600	R.M.	-do-
372.	Gundavali	S. NO. 9A, 2/3 (P)	11-12 12	W-42	ON The West of Mahal Industrial Estate.	2700	MF&M	-do-
5	LIBRARY & (6) WELFARE CENTRE (EXISTING ON SITE)							
373.	Vileparle	345 (P), 336 337,346	18-23	W-42	Jeevan Viakas Kendra	1465	W.C.	Existing
374.	Gundavali	CTS No. 276 (P), S. No. 79/C	9	W-42	Kamgar Kalyan Kendra Gundavali	1685	W.C.	-do-
375.	-do-	S. No. 13 (P), CTS No. 209 (P), 210 (P)	17 17	W-39,42 42,	L & T Welfare Centre at the jn. of W.E. Highway & M.V. Rd.	2800	W.C.	-do-

APPENDIX - I CONTD.

K/EAST WARD

Sr. No.	Village D.P.	C.T.S. No. or S. No. in	Tikka of	Revised re-se-sheet No	Location Proposed.	Area sq.m.	Purpose of Reservation.	Existing Proposed
1	2	3	4	5	6	7	8	9
Proposed Amenities.								
376.	Vileparle	F.P. No. 77	TPSI	W-45	Mangibai Road	1364	W.C.	Proposed
377	-do-	F.P. No 199A	TPSV	W-45	Dayaldas Road	568	W.C	-do-
378.	Majas	CTS NO. 78 (P) & 80 (P)	27-28	W-39	On the mouth of Saple Industries.	5610	-do-	-do-
379.	Mogra	S. No. 52 (P)	8	W-39	North of Foli Spirit Hosp.	2975	-do-	-do-
380.	Vileparle	CTS No. 582	37-40	W-42	Behind Shan Cinema	1562	-do-	-do-
381.	Kondivata	CTS no. 168 (P), 173 (P) 174, 158 (P), 157 (P) 176 (P)	12	W-43	Along Mukund Nagar 30 D. P. Road,	3730	-do-	Proposed
382.	Marol	CTS No. 284/22, 284 284, 284/30, 284/24	14	W-43	on the West of Mithi river.	950	W.C. & Lib.	Proposed
383	-do-	CTS No. 758	39	W-43	On the South of Shanti Jamtile at Marol.	2715	W.C. & Lib + D	-do-

APPENDIX - I CONTD.

K/EAST WARD

Sr. No.	Village D.P.	C.T.S. No. or S. No. in	Tikka of	Revised ree-sheet No.	Location Proposed.	Area sq.m.	Purpose of Reservation.	Existing Proposed
1	2	3	4	5	6	7	8	9
(7) FIRE BRIGADE (EXISTING ON SITE)								
384.	Marol	S. No. 146 (P)	36-37	W-43	Marol Maroshi Road & M.V. Road Junction	14225	F. B.	Existing
(PROPOSED AMENITIE)								
385.	Vileparle	F.P. No. 507	TPS V	W-45	Azad Road	2583	F. B.	Proposed
(B) CEMETERIES (EXISTING ON SITE)								
387.	Chakala	522, 538 (P), 539 (P)	13	W-42	South of Gold Spot Factory Sahar Road	7950	Cemetery	Existing
388.	Sahar	250 (P)	15	W-45	Near CPWD Quarters Sahar Church, Sahar,	850	-do-	-do-
389.	Sahar	422, 145 (P), 239 (P)	10	W-45	West of Pipeline	15950	-do-	-do-
390.	Majas	46	46	W-49	South of Sher-E-Punjab Society.	6320	Cremation & Dargah	-do-
391.	Majas	232 (P)	14,7	W-35	Pratap Nagar Hindu Cemetery	2950 2845	Cemetery	-do-

APPENDIX - I CONTD.

K/EAST WARD

Sr. No.	Village D.P	C.T.S. No. or S. No. in	Tikka of	Revised ree-sheet No.	Location Proposed.	Area sq.m.	Purpose of Reservation.	Existing Proposed
1	2	3	4	5	6	7	8	9
391	A. -dc-	-do-	-do-		Near Pratap Nagar Hindu Cemetery	105	Temple	-do-
392.	Marol & Kancivile	43 (P)S. No 91 (P)		W-43	West of Pipeline 90' D. P Road	2475	Cemetery	-do-
393.	Marol	1306,1306/5 (P)	26-27	W-43	Behind Marol Church	2080	-do-	-do-
394.	Chakala	S. No 52	2	W-42	North of Holy Spirit High School	2100	-do-	-do-
395.	Marol	655,S. No. 32/9	30-31	W-40	West of Mithi River	5290	-do-	-do-
396.	Marol	405, 405, 415 (P) 399,411,412,406 (all parts)	23 & 24	W-43	West of Borosil Fact. near Marol Urdu School.	4255	-do-	-do-

PROPOSED AMENITIES :

NIL

(9) HOUSING

A) MUNICIPAL HOUSING (PROPOSED)

397.	Ma,as	S.No 4 (P), 11 (P) H. No.1	6	W=35	Ajgaonkar Plot Bandrekar Wadi	3685	M.H.	Proposed
------	-------	-------------------------------	---	------	----------------------------------	------	------	----------

APPENDIX - I CONTD.

K/EAST WARD

Sr. No.	Village D.P.	C.T.S. No. or S. No. in	Tikka of	Revised re-sheet No.	Location Proposed.	Area sq.m.	Purpose of Reservation.	Existing Proposed
1	2	3	4	5	6	7	8	9
397A	-do-	-do-	6	W-35	-do Asmita School	1500	SΔS	Proposed
(B) HOUSING FOR DISHOUSED (PROPOSED)								
398.	Vileparle	17,18, 34 (P), S. No.33, H. No. 9	5 & 7	W-42	On the south of K/E Ward Office.	10075	Housing for dishoused	-do-
399.	-do-	352 (P)	18	W-42	Jeevan Vikaskendra	1405	-do-	-do-
401.	-do-	387	23 & 36	W-42	On the East Rly. line & north of Parle Products.	2575	-do-	-do-
402.	Gundavali	422, 450, 443, 449 all parts, S. No. 33 (P), 34 (P), 54 (P) 36 (P)	22	W-42	On the South of	3060	-do-	-do-
403.	-do-	S. No. 34, 32	22	W-42	Koldongri road No. 1 East Side.	4815	-do-	-do-
404.	Vileparle	F. P. No. 109	TPS V	W-45	Mahant Road Extension.	2970	-do-	-do-
405.	-do-	FP No. 65	-do-	-do-	Prarthana Samaj Road.	2316	-do-	-do-

APPENDIX - I CONTD.

K/EAST WARD

Sr. No.	Village D.P.	C.T.S. No. or S. No. in	Tikka of	Revised ree-sheet No.	Location Proposed.	Area sq.m.	Purpose of Reservation.	Existing Proposed
1	2	3	4	5	6	7	8	9
406.	-do-	J.E. P. No. 121	-do-	-do-	North of Happy Home Society (East of Highway)	1027	-do-	-do-
407.	-do-	119-B	-do-	-do-	Dayaldas road	1213	-do-	-do-
408.	-do-	188 A, 188 (H)	TPSV	-do-	South of Sardar Vallabhai patel Hsg. Scty.	2555	-do-	-do-
409	-do-	FP. No. 425-A	-do-	-do-	Azad Road	1370	-do-	-do-
410.	-do-	392 A	-do-	-do-	Gujarathi Mandal Road.	745	-do-	-do-
410.A.	-do-	FP 152	-do-	-do-	North of Parle Collage	448	-do-	-do-
410 B.	-do-	Fp 380	-do-	-do-	Gujarathi Mandal Raod.	580	-do-	-do-
411.	Chakala	513 (P) & 523 (P)	7	W-42	On the East of Gold Spot Factory	2800	H.D.	Proposed
412								
413.				W-45		3414	M.O. & S. C.	Proposed

APPENDIX - I CONTD.

K/EAST WARD

Sr. No.	Village D.P.	C.T.S. No. or S. No. in	Tikka of	Revised re-sheet No.	Location Proposed.	Area sq.m.	Purpose of Reservation.	Existing Proposed
1	2	3	4	5	6	7	8	9
414.	Marol	1659 (P)	48	W-43	On the South of M.V. Road.	4000	-do-	-do-
415.	Mogra	201, 203, 204, 80 all parts.	10 11	W-39	North of Parsi Wada	3098	PH/HDH	-do-
416.	Isma iya	159 (P)	9	-do-	Hindu Friends Socieity Road	1800		-do-
417.	Mogra	111	18	W-39	East of Old Nagardas Road.	2128	P-H/HDH	-do-
418.	-co-	170(P)	20	W-39	Nagardas X Road	920	-do-	-do-
419.	Majas	70 (P), 52 (P)	12	W-35	East of Rly. Marashellig Yard.	4225	-do-	-do-
420.	Majas	S. No. 45 (P), 49 (P)	13	W-35	North of 120 Link Road & West of Highway	7150	H. D.	-do-
421.								
422.	Kondivata	S. No.. 21 (P), CTS No. 56. (P), 135 (P)	12	W-43	On the West of 90' D. P. Road, Pipe L ne.	5300	-do-	-do-

APPENDIX - I CONTD.

K/EAST WARD

Sr. No.	Village D.P.	C.T.S. No. or S. No. in	Tikka of	Revised re-sheet No.	Location Proposed.	Area sq.m.	Purpose of Reservation.	Existing Proposed
1	2	3	4	5	6	7	8	9
423.	Marol	CTS 284/2,3, (pt) 284/5, 284/8, 9, 12, 13, 15, 19 (P), 21 (P)	13-14 14	W-43	West of Mithi River	5400	-do-	-do-
424.	-dc-	124, 125, 126, 127, (All parts)	8	-do	South of Police Armed Head Qrts & West of Mithi River.	4150	-do-	-do-
425A.	Gundavali	S. No. 83 A (P), 31 (P)	Parle 6,7 Gund. 22, 23 5,6	W-42	South of 120 wide Andheri Ghatkopar Link Rd.	6025	P. H.	Proposed
425 B.	-do-	S. No. 30 H. No. 4 (P) S. No. 33 (P)	-do-	-do-	-do-	3750	-do-	-do-
425 C.	-do-	S. No. 35 (P), 34 (P), 39(P)	-do-	-do-	-do-	4500	-do-	-do-
425 D.	-do-	S. No. 35 (P)	-do-	-do-	-do-	2050	-do-	-do-
425 E.	-do-	S. No. 838 (P), 35	-do-	-do-	-do-	2750	-do-	-do-
425 F.	-do-	S. No. 32 (P), 33 (P)	-do-	-do-	-do-	2200	-do-	-do-
425 G.	-do-	30 (P), 31 (P)	-do-	-do-	-do-	1350	-do-	-do-

APPENDIX - I CONTD.

K/EAST WARD

Sr. No.	Village D.P.	C.T.S. No. or S. No. in	Tikka of	Revised re-sheet No.	Location Proposed.	Area sq.m.	Purpose of Reservation.	Existing Proposed
1	2	3	4	5	6	7	8	9
426 A.	Majas Mulgaon Mogra	S. No 9A (P) of Mogra	25-26 36-37	W-39	South of Squatter colony & Sher-E-Punjab Society & North of Holy Spirit Hosp.	10000	-do-	-do-
426B.	-do-	S. No. 9A (P), 22A, 22B, 25 (P) 26 24, 27 (P) of Mogra.	13-14 Mogra	-do-	-do-	-202661	-do-	-do-
426C	-do-	47 (P), 48 (P), 50 (P) 51 (P) of Majas Village.	27-28 Majas	-do-	-do-	40750	-do-	-do-
426 D	-do-	S. No.45 of Majas	28	-do-	-do-	9250	-do-	-do-
426 E	-do-	40 (P), 54 (P), 46 (P)	29	-do-	-do-	5185	-do-	-do-
426 F	-do-	40 (P) of Majas	30	W-39	-do-	21105	-do-	-do-
426 G	-do-	40 (P) of Majas	31	do-	-do-	12500	H.D.	-do-
426 H	-do-	46 (P) of Majas	39	-do-	-do-	52525	H. D.	-do-
426 I	-do-	46 (P) of Majas & S.No. 55(P) of mulgoon	40-41 mulgoon	-do-	-do-	37525	H. D.	-do-

APPENDIX - I CONTD.

K/EAST WARD

Sr. No.	Village D.P.	C.T.S. No. or S. No. in	Tikka of	Revised ree-sheet No.	Location Proposed.	Area sq.m.	Purpose of Reservation.	Existing Proposed
1	2	3	4	5	6	7	8	9
425 J	-do-	48 (P) of Majas	46 majas 38	-do-	-do-	9825	H.D.	-do-
426 K	Majas Mulgaon	46 (P), 45 (P) Majas	1-3 mulgaon 46 majas	W-39	South of Squatter Conlony & Sher-E-Punjab Society & North Of Holy Spirit Hosp	24300	P.H.	-do-
426 L	-do-	40 (P), of Majas & 55 (P) 53 (P), 51 (P) 52 of Mulgaon	1-3 Mulgaon 46 Majas	-do-	-do-	102500	P. H.	-do-
426 M	-do-	46 (P) of Majas 28,29 (P) of Mogra	45	-do-	-do-	11550	-do-	-do-
426 N	-do-	32,33, 31 (P) 34, 35 (P)	8	-do-	-do-	175400	-do-	-do-
426 O	-do-	34(P) 35(P) 37 (P) 30, 37 to 43 (P)	16	W-39	-do-	177500	-do-	-do-
426 P	-do-	Plot No. 149, 150 & 151	16	W-39	Sher-E-Punjab Society.	2100	College	-do-
426 Q	-do-	20 (P), 19 (P) of Mulgaon	6	-do-	-do-	925	ph	-do-

APPENDIX - I CONTD.

K/EAST WARD

Sr. No.	Village D.P.	C.T.S. No. or S. No. in	Tikka of	Revised re-sheet No.	Location Proposed.	Area sq.m.	Purpose of Reservation.	Existing Proposed
1	2	3	4	5	6	7	8	9
D) OTHER HOUSING (EXISTING ON SITE)								
428.	Vileparle	FP No. 274, 275 (P)	TPV	W-45	Shradhanada Road extn.	3254	Conservancy Staff Quarters.	existing
429.	-do-	FP No. 411	-do-	-do-	On the West of Shradhanada Road Extension	500		
430.	Andheri	677	46	W-42	Opp. Andheri Station (East)	2980	Police Housing	-do-
431.	-do-	680	46	W-42	On the West of Court.	3751	-do-	-do-
432.	-do-	670	46	-do-	on the south of Court	2045	-do-	-do-
433.	-do-	681, 679	46	-do-	On the north of Deo Gally	3940	-do-	Proposed
434.								
435.	-do-	FP No 308, 309, 310	TPSV	W-45	On the North of Tele. Exchange	1585	Tel Hsg. -do-	Proposed -do-
436.	Marol	S. No. 96,97 (P)		W-46	On the East of Air port Bombay & Mithi River	15685	Dhobi Housing	-do-

APPENDIX - I CONTD.

K/EAST WARD

Sr. No.	Village D.P.	C.T.S. No. or S. No. in	Tikka of	Revised re-se-sheet No.	Location Proposed.	Area sq.m.	Purpose of Reservation.	Existing Proposed
1	2	3	4	5	6	7	8	9
10. Public Utility (Existing On site)								
(A) Water Reservoirs								
437.	Vyaravali (Kondivate) Majas	Vaeravali, S. No. 9 (P) Kondivata, S. No. 85, 86 (P) & 140 (P) of Majas 42.	Kondivata 24-33 Vyaravali	W-40	Mahakali Caves Road Vyaravali Low Level Reservoirs.	21 Acres 380 Gunthas 80808 M ²	Reservoir Municipal Staff Quatr	Existing
438.	Vyaravali Prajapur	S. No. 9 (P) of Vyaravali S. No. 14 (P) of Prajapur.	2,3, 3A	W-40	Mahakali Caves Road Vyaravali High Level Reservoir.	23 Acres 12 Gunthas 903 84 M ² 3200	-do- Municiple Staff Quarter	-do-
439	-do-	S. No. 9 (P), 13 (P) 12 (P)	10, 11 12	W-40	On the South of Caves & North of BEST Bus Depot at Central Rd. Near Seepre	23 Acre 32 Gunthas 86256 M ² 6000	-do- Municipal Staff Quarter	-do- Proposed
440	Kondivata	Cts No. 350, 551	33	W-40	West of Caves & South of Low Level reservoir.	5440	Reservoir Extension	Proposed

APPENDIX - I CONTD.

K/EAST WARD

Sr. No.	Village D.P.	C.T.S. No. or S. No. in	Tikka of	Revised re-se-sheet No.	Location Proposed.	Area sq.m.	Purpose of Reservation.	Existing Proposed
1	2	3	4	5	6	7	8	9
c)	H. E. S and :	Nil						
c)	PUMP House/Stations :	Nil						
d)	Water Works :	Nil						
B)	Drainage							
a)	Drainage Purification works :	Nil						
b)	Balance Reservoir		Nil					
c)	Lagoons							
d)	Pumping Station (Existing on site)							
441.	Marol	CTS No. 706 S.No 47 (P)	49	W-43	Opp. Saug Baug Municipal School West of Mithi River	2620	Pumping Station	Existing

Proposed : Nil

- c) REFUSE DISPOSAL
- a) Night Soil depots : Nil
- b) Refuse Transfer Station : Nil
- c) Refuse Sheds : Nil
- d) Conservance Chowky / Ward Chowkies
Existing on site : Nil

APPENDIX - I CONTD.

K/EAST WARD

Sr. No.	Village D.P.	C.T.S. No. or S. No. in	Tikka of	Revised re-sheet No.	Location Proposed.	Area sq.m.	Purpose of Reservation.	Existing Proposed
1	2	3	4	5	6	7	8	9
Proposed :								
442.	Gundavali	C.T.S. NO. 238 (p)		W-42	South of 120, Link Road and east of Chandra Shekhar Society.	100	Municipal Chowky	Proposed
443.	Mogra	319 (part)	3	W-39	Natwar Nagar Road, No.1	1100	Mun. Chowky	-do-
444.	Vileparle	FP NO. 86	TPSI	W-45	Ram Mandir Road Vileparle (E)	664	Conservancy Chowkey	-do-
445.	Chakala	CTS NO. 198 (P), 236 (P)	21	W-42	Tarun Bharat Co-op. Hsg. Society.	525	Mun. chowky & Municipal Shed.	-do-
446.	Gundavali	S. No. 55, CTS. No. 8	9	W-42	On the East of Azad road & M.V. road	720	Mun. Chowky	-do-
447.	-do-	272 (F)	1B	W-42	M. V. Road Opp. Mohan Studio & Mun. Road Depot.	1250	Mun. of Chowky	-do-
448.	Marol	CTS No. 335, S.NO. 21/5	19	W-43	Military Road & Borosil Glass Co. Road Junction.	240	Mun. Chowky & Store	-do-

APPENDIX - I CONTD.

K/EAST WARD

Sr. No.	Village D.P.	C.T.S. No. or S. No. in	Tikka of	Revised re-sheet No.	Location Proposed.	Area sq.m.	Purpose of Reservation.	Existing Proposed
1	2	3	4	5	6	7	8	9
(D) Electricity								
a & b Receiving stations and substations : existing on site :								
449.	Mulgaon	S. No. 3 (P), 64 (P)	21	W-42	MIDC Central Road	7920	BSES Sub-Station.	Existing
Proposed.								
450.	Vileparle	FP NO. 32, TPS V	TPSV	W-45	Hanuman Road	495	BSES	Proposed
451.	Majas	CTS No. 126, 127, 128, 130 (P), 129 (P), 131 (P) 132 (P)	38	W-38, 39	East of Potter's Colony	7600	BEST Bus Stn.	
451 A	-do-	-do-	-do-	-do-	-do-	500	BSES Sub Stn.	-do-
452.	Vileparle	FP NO. 154, TPS V	TPSV	W-45	On the East of Park College	220	BSES Sub Stn.	-do-
453.	-do-	FP No. 495, TPSV	-do-	-do-	On the south of Fire Erigade at Azad Road.	472	-do-	-do-
454	-do-	FP No. 523, TPSV	-do-	W-45	On the South of Subway at Vileparle.	195	Petrol Pump	-do-
455.	Marol	CTS NO. 716, 715	40	W-45	On the West of Mithi River.	1757	-do-	-do-

APPENDIX - I CONTD.

K/EAST WARD

Sr. No.	Village D.P.	C.T.S. No. or S. No. in	Tikka of	Revised ree-sheet No.	Location Proposed.	Area sq.m.	Purpose of Reservation.	Existing Proposed
1	2	3	4	5	6	7	8	9
455 A	BSES Sub	Majas Proposed	S. No. 10 (P)	7	W-35	On the north of	Stn.	5500
(E) POST & TELEGRAPH								
(A) Post office (Existing on site)								
456.	Vileparle	CTS NO. 607	37,40	W-42	Praranjpe Scheme 'A' 528 'A' & South of Laxmi Cinema.		Post Office	Existing
457.	-do-	FP No. 131, TPS II		W-45	At the Junction of Nehru road & Malviya Road.	643	-do-	-do-
(Proposed)								
458.	Vileparle	FP NO. 228 TPS V	TPS V	W-45	Nanda Patkar Road	403	-do-	-do-
459.	Majas	MHB Layout	45	W-39	In MHB Layout South of Sher-E-Punjab Socceity.	225	-do-	-do-
(B) Telephone Exchange : (Existing On site)								
460.	Vileparle	FP. No. 330, TPS V	TPS V	W-45	Nanda Patkar Road	5204	Telephone Exchange	Existing
461.	Mulgaon	CTS Nos. 118 (P) 119 (P) 120 (P), 122 (P), 121 (P)	22,17	W-39	MIDC Central Road Marol (Telephone Exchange)	11952	-do-	-do-

APPENDIX - I CONTD.

K/EAST WARD

Sr. No.	Village D.P.	C.T.S. No. or S. No. in	Tikka of	Revised ree-sheet No.	Location Proposed.	Area sq.m.	Purpose of Reservation.	Existing Proposed
1	2	3	4	5	6	7	8	9
(Proposed) NIL								
c) Telephone Service Centres (Existing on site)								
462	Marol	CTS No. 709	40	W-43	On the south of Marol Co-op. Industrial Estate & West of Mithi River.	1680	Telephone Centre	Existing
463.	-do-	CTS NO. 47 (P), 48 (P)	40	W-43	on the north of Sagbaug Municipal Primary School	4375	P & T Training Centre	-do-
d) P & T Garages : NIL								
P) Police Stations : (Existing on site)								
464	Andheri	674	34	W-42	At the Junction of Andheri Kurla Road & Sahar Road.	3361	Police Station	Existing
465.	Sahar	68-A	Airport Area	W-45	Nehru road	605	-do-	-do-
466.	Vileparle	FP No 184, TPS V	TPS V	W-45	Dayaldas Road	287, 40	-do-	Proposed

APPENDIX - I CONTD.

K/EAST WARD

Sr. No.	Village D.P.	C.T.S. No. or S. No. in	Tikka of	Revised re-sheet No.	Location Proposed.	Area sq.m.	Purpose of Reservation.	Existing Proposed
1	2	3	4	5	6	7	8	9
11.	Communications :							
	a) Roads :							
	b) Railways :							
	c) B.E.S.T. : Existing on Site							
467.	Andheri	677 (P)	46	W-42	Opp. Andheri Station Station.	1235	BEST Bus	Existing
468.	Mulgaon	F/9, MIDC Layout	15-16	W-42	Central Rd., MIDC	19815	BEST BUS Depot	Existing
469.	Vyaravali	MIDC Layout	17	W-40	Seepze Central Road,	4550	-do-	-do-
	(Proposed)							
470.	Andheri	802	45-46	W-42	South of Alka Bldg. Sahar Road.	715	BEST	Proposed
471.	Malas	S. No. 33 (P), 55 (P)	29	W-39	On the East of Dyana Craft Factory 150' Link Rd.	29500	BEST Bus	-do- Depot
472.	Marol	308 (P)	22	W-43	Marol Maroshi Road & North of Marol Gaothan.	5000	BEST Bus Depot	-do-
473.	Marol	65/3, 65/2	28	W-43	Marol Maroshi road and West of Marol Industrial co-op Housing Society.	1390	-do-	-do-

APPENDIX - I CONTD.

K/EAST WARD

Sr. No.	Village D.P.	C.T.S. No. or S. No. in	Tikka of	Revised re-se-sheet No.	Location Proposed.	Area sq.m.	Purpose of Reservation.	Existing Proposed
1	2	3	4	5	6	7	8	9
D) Goods Truck Terminal : Nil Parting Lots : Existing : NIL Proposed								
474	Andheri	803	45	W-42	North of Alka Bldg.	260	Parking Lot.	Proposed
475.	Andheri	610	33	W-42	South of Usha Cenema	713	Parking Lot.	-do-
476.								
477.	Chakala	228	20	W-42	opp. Market Tarun Bharat Society	452	-do-	-do-
478.	Bapnalla & Sahar	Sahar S. No. 10 (P) & 9 (P)	11B Sahar	W-46	South of Yellow Faver Hosp. & North of Airport Road starting from Pipe Line.	30800	Parking Ancillary to the Air port.	-do- Ancillary
479.	Maro & Sahar	Marol 130 (P), 136 (P) & Sahar 104 (P), 4 (P)	Marol 30-36 44-45 Sahar LIC	W-43 W-36	Parking Lot along International Airport Road starting from M.V. Road	24000	Parking Wt	-do-
480.	Vyaraval	CS No. 6, CTS 15 (P)	21	W-40	On the south of Seepz Bus Station West of Central Road	3742	P.L.	-do-

APPENDIX - I CONTD.

K/EAST WARD

Sr. No.	Village D.P.	C.T.S. No. or S. No. in	Tikka of	Revised ree-sheet No.	Location Proposed.	Area sq.m.	Purpose of Reservation.	Existing Proposed
1	2	3	4	5	6	7	8	9
481.	Marol	C S No. 8/10, CTS 284 (P) 224 (P)	14-20	W-43	West of Mithi River	2230	Parking lot	-do-
f) S.T. Depot : Nil g) Transport Garage : Nil h) Airport i) Jettys : Nil j) B. P. T. : Nil								
12. Miscellaneous								
a) Municipal Office & Stores : Existing								
482.	Vileparle	FP No.12	TPS I	W-45	Mahatma Gandhi Road,	439	Municipal Officer.	Existing
483.	Vileparle	FP 163	TPS II	W-45	Shradhanand Road	439	-do-	-do-
484.	-do-	FP No. 321	-do-	-do-	Junction of Nehru Road & Dixit Road.	682	-do-	-do-
485.	Marol	S No. 157 (P), 164 (P) 161 (P)	16,17	W-40	Marol Maroshi Road	35200	BMC Store	-do-
Proposed								
486.	Gundavali	CTS No. 433, 417 (P)	15	W-42	East of Chandra Shekhar Society.	3380	Municipal office.	Proposed
487.	-do-	179,177	2	-do-	Azad Road	6025	-do-	-do-

APPENDIX - I CONTD.

K/EAST WARD

Sr. No.	Village D.P.	C.T.S. No. or S. No. in	Tikka of	Revised re-sheet No.	Location Proposed.	Area sq.m.	Purpose of Reservation.	Existing Proposed
1	2	3	4	5	6	7	8	9
B) Govt. Officers : Existing :								
483.	Andheri	CTS No. 16. S. NO. 157 (P) 161 (P), 163 (P)	46	W-42	Alka Bldg. Sahar Road	510	Rationing Officer Cum Parking Lgd.	Existing
c) Courts : Existing								
489	Andheri	C.T.S. NO. 665	46	W-42	On the South of K. V. Road	3526	Court	Existing
Proposed								
490.	Gundavali	Sn.o 370 (P)	15	W-42	Telli Gully	2565	Court	Proposed
d) Dog Kanel : Nil								
e) Cattle Ponds : Nil								
f) Dhobi Ghats : Existing								
491	Mogra	Cts No. 134	18-19	W-39	Parsi Panchyat Road	1500	Dhobi Ghat.	Existing
492.	Majas	C.T.S. No. 173 (P)	25	W-39	On the north of Dalvai compound.	275	-do-	-do-
493.	Marol	S. No. 96, 98 (P)	Airport Area	W-46	On the east of Airport Boundary at the Mithi river.	50485	Centrali Sed and Dhobi-Ghat.	Proposed

APPENDIX - I CONTD.

K/EAST WARD

Sr. No.	Village D.P.	C.T.S. No. or S. No. in	Tikka of	Revised ree-sheet No.	Location Proposed.	Area sq.m.	Purpose of Reservation.	Existing Proposed
1	2	3	4	5	6	7	8	9
g) ROAD DEPOT								
494.	Vileparle	522	TPS V	W-45	North of Sub-way at Azad Road,	1075	BEST Bus Station.	Proposed
495.	Marol	S. No. 10. H. No. 34 (P) CTS No. 173 (P), 174 (P), 161 (P) 213 (P) < 209 (P)	18	W-43	Military road	3000 2685	P.L. R.D.	-do-
h) Octroi Offices - NIC								
1) P. S. C. S. - Existing : Nil								
Proposed								
496	Vileparle	348(P)	18	W-42	North Of Jeevan Vikas Kendra.	2310	Hosp. & Public Hall.	-do-
497.	Vileparle	FP 228	TPSII	W-45	At the Junction Nehru road & Malviya road.	310	P.S.C.	Proposed
498.	-do-	FP No. 158	-do-	-do-	On the north of Dahanukar College Dixit Road.	248		-do- -do-
Cinemas & Drama Theatres								
499.	Vileparle	CTS No. 579	41-42 42 41	W-42	Shan Cinema M. G. Road,	4427	Cinema Theatres.	Existing

APPENDIX - I CONTD.

K/EAST WARD

Sr. No.	Village D.P.	C.T.S. No. or S. No. in	Tikka of	Revised ree-sheet No.	Location Proposed.	Area sq.m.	Purpose of Reservation.	Existing Proposed
1	2	3	4	5	6	7	8	9
500.	-do-	CTS No. 521	41-42	W-42	Laxmi Cinema, MG Road	1844	-do-	-do-
501.	-do-	140 (P), 141 (P) 142(P)	22	W-42	Bahar Cinema, Sahar Road	3525	-do-	-do-
502.	Ancheri	CTS No. 608	34-33	-do-	(Usha Talkies) Pinky Cinema New Nagardas Road,	1600	-do-	Existing
503.	Chakala	CS No.99 (P), 98 (P), 91 (P)	10	W-42	Sangam Cinema, M.V. Rd,	6350	-do-	-do-
504.	Gundavali	C.T S. No. 263	17	W-42	Suran Road, Darpan Cinema	1760	-do-	-do-
K) Public Halls : Existing								
505.	Vileparle	FP No. 170	TPS II	W-45	Thakkar Hall, Shraddanand road.	1595	Public Hall Existing	
506.	-do-	Vijay Nagar Layout	7	W-42	Vijay Nagar Sahar Road.	2280	-do-	-do-
507.	-do-	FP No-95	TPS I	W-45 W-45	Tilak Hall, Tilak Mandir Road.	858	-do-	-do-

APPENDIX - I CONTD.

K/EAST WARD

Sr. No.	Village D.P.	C.T.S. No. or S. No. in	Tikka of	Revised re-se-sheet No.	Location Proposed.	Area sq.m.	Purpose of Reservation.	Existing Proposed
1	2	3	4	5	6	7	8	9
l)	Municipal Printing Press		:	Nil				
m)	Musiums		:	Nil				
n)	Shopping Centres		:	Nil				
o)	Net Drying yards & Fishing activities		:	Nil				
p)	Industrial Estate		:	Nil				
q)	Service Industries		:	existing				
508.	Kondivata & Sahar	S. No. 25, H. No. 4 CTS No. 151, 152, 148 (P)	Kondivata 26 Sahar 3		East of Tarun Bharat W-42 Layout.	5390	S.I.	Existing
509.	Vileparle	Fp No. 187	TPS II	W-45	Nariman Road	532	S.I.	Proposed
510.	Marol	CTS 284 (P), 264 (P), S. No. 264 (P), 8/12	-do-	W-43	West of Mithi River	4680	S.I.	-do-
511.	Vileparle	229-A	TPS V	W-45	Near Nandu Patkar Rd. & Nariman Road.	770	S.I.	-do-
512.	Mogra	MHB Layout	48	W-39	South of MHB Layout.	4720	S.I.	Proposed
r)	Godown/s Spl. godowns		: Nil					
s)	Work Shops		: Nil					
t)	Warehousing		: Nil					
u)	Municipal Laundry		: Nil					
v)	Govt. Printing Press		: Nil					

APPENDIX - I CONTD.

K/EAST WARD

Sr. No.	Village D.P.	C.T.S. No. or S. No. in	Tikka of	Revised ree-sheet No.	Location Proposed.	Area sq.m.	Purpose of Reservation.	Existing Proposed
1	2	3	4	5	6	7	8	9
w)	Civil Defence : Nil							
x)	Pedhis Rehousing of Shops		: Nil					
y)	Caves							
513.	Vyaravali	5-11		W-40	Mahakali Caves Road	10555	Caves	existing
Police Armed head quarters : existing on site								
514.	Marol	S. No 13 (P), 14(P), 10 (P) 15,16 (P), 18 (P), 19 (P)	6,7,8	W-43	Marol Maroshi Road	210000	Police Armed Hd. p.G.	Existing Quarters. Proposed
515.	Gundavali	CTS No.1 (P), 2 (P), 4 (P) of Gundavali.	9 & 10	W-42	On the East of Kamgar Kalyan Kendra.	580		
516.	Marol	Cts No 414, 420	23	W-43	Marol Urdu School Off Marol Maroshi Road	520	PΔP	Existing
517.	Marol	CTS No. *289 (P), 1282 (P)	21-22	W-43	In the Saifee Foundation Layout.	4340	Pvt. Secondary. School	Proposed
518.	Majas	CTS No. *82 (P) < 190 (P) S. No. 38, 40, (P) of Majas	22 & 32	W-40	On the west of Modern Bakery & North of Vyaravali Low Level Reservoir.	14000	Medical College & Staff qrts	Proposed

APPENDIX - I CONTD.

K/EAST WARD

Sr. No.	Village D.P.	C.T.S. No. or S. No. in	Tikka of	Revised ree-sheet No.	Location Proposed.	Area sq.m.	Purpose of Reservation.	Existing Proposed
1	2	3	4	5	6	7	8	9
519.	Mulgaon & Kondvata.	CTS 179, 181 (P) 185 (P), of Mulgaon & 222 & 221 Kondivata.	25-25A of Mulga on. gaon. 9 & 16.	W-42	Opp. Podder High School (Rastriya Metal Housing of Kondivata.)	5000	Municipal	-do-
520.	Mulgaon & Kondivata	CTS 179, 185 (P), of Mulgaon & 222 of Kondivata.	25-25A Mulgaon 9-16 of Kondivata	W-42	Andheri Kurla Road	2000	Public Hall	-do-
521.	-do-	-do-	-do-	-do-	-do-	3000	Police Staion	-do-

(Note : The C.S. nos. and areas mentioned above are tentative without prejudice).

1. Area of the Ward 24.78 sq.mts.

2. Projected population 2001 A. D. 5,45,483

K / East Ward

Sr. No.	Amenity	Existing Amenities		Amenities proposed in		Total		Remarks
		No.	Area(sq.mts.)	No.	Area (sq.mts.)	No.	Area(sq.mts)	
1.	Open spaces							
	a) Recreation Ground	-	-	62	856794	62	856794	
	b) Parks	2	3590	4	60140	6	66738	
	c) Play Ground	18	98806	69	261864	7	360470	
	d) Stadia	-	-	-	-	-	-	
	e) Swimming pools	-	-	-	-	-	-	
	f) Amenity open space/Pvt.R.G./ Garden	1	2250	1	11225	2	13475	
	g) Gardens	5	15307	30	186507	5	201814	
	h) Gymnasiums	-	-	-	-	-	-	
2	Education							
	a) MΔP and PΔP	29	53730	32	91118	62	144848	
	b) SAS	28	98530	24	82761	53	181291	
	c) Colleges & Polytechnics	5	157037	-	-	-	-	
	d) Technical & Other Institutions (school or Destitutes & Hotel Management Training centre.	-	-	2	8250	2	8250	
3.	Medical Relief							
	a) General Hospitals & specific Hosp.	3	89,335	2	125970	5	215305	
	b) M. H.	1	920	9	27323	10	28243	
	c) D+	6	3040	15	12312	21	15352	
	d) Medical Centre	-	-	-	-	-	-	

Sr. Remarks No.	Amenity	Existing Amenities		Amenities proposed in		Total	
		No.	Area(sq.mts.)	No.	Area (sq.mts.)	No.	Area(sq.mts)
	e) Sanitoriums	-	-	-	-	-	-
	f) Laprosy Home	-	-	-	-	-	-
4	Retail market/Municipal Retail Maket & Municipal Housing.	7	22127	11/2	34165/4700	20	60992
5	Library/W.C./+D	-	-	2	3665	2	3665
6	Welfare centre	3	3475	9	13774	12	16849
7	Fire Brigade	1	14225	1	2583	3	13805
8	Cemeteries & Cremation Ground	10	55.520	-	-	10	55520
9	Housing						
	a) Munciple Housing	-	-	1	3685	1	3685
	b) Housing for dishoused	-	-	25	79539	25	79539
	c) Public Housing	-	-	25	813485	25	813485
	d) Other Housing such as Govt. Housing, Police Housing Court Housing, Dhobi Housing Telephone Housing.						
	Police Housing	4	12716	-	-	4	12716
	Dhobi Housing	-	-	1	15685	1	15685
	Telephone Housing	-	-	1	1585	1	1585

Sr. Remarks No.	Amenity	Existing Amenities		Amenities proposed in		Total	
		No.	Area(sq.mts.)	No.	Area (sq.mts.)	No.	Area(sq.mts)
10.	Public Utility :						
	A-Water						
	a)	3	212000 (68 acres)	1	5440	4	217440
	b) H. E.s land	-	-	-	-	-	-
	c) Pump House / station	-	-	-	-	-	-
	d) Water Works	-	-	-	-	-	-
	B - Drainage						
	a) Drainage Purification works	-	-	-	-	-	-
	b) Balancing Reservoir.	-	-	-	-	-	-
	c) Lagoon	-	-	-	-	-	-
	d) Pumping station	1	2650	-	-	1	2628
	C - Refuse Disposal :						
	a) Night Soil Depot.	-	-	-	-	-	-
	b) Refuse Transfer str.	-	-	-	-	-	-
	c) Refuse sheds	-	-	-	-	-	-
	d) Conservancy chowkies Ward chokies	7	4609	-	-	7	4609
	D - Electricity						
	a) Receiving Stations-2	1	7200	6	8639	7	15839
	b) Sub - Stations	-	-	-	-	-	-
	E - Post & Telegraph						
	a) Post office	2	1171	2	627	4	1798
	b) Telephone Exchange	2	13124	-	-	2	13124
	c) Telephone service centre	2	6055	-	-	-	6055
	d) P & T Factory	-	-	-	-	-	-
	F - Police Stations	-	-	-	-	-	-

Sr. Remarks No.	Amenity	Existing Amenities		Amenities proposed in		Total	
		No.	Area(sq.mts.)	No.	Area (sq.mts.)	No.	Area(sq.mts)
11.	Communications						
	a) Roads	-	-	-	-	-	-
	b) Railways	-	-	-	-	-	-
	c) B. E., S. T. Depot	3	26135	9	46800	12	72935
	d) Goods Truck Terminal	-	-	-	-	-	-
	e) Parking Lots	-	-	5	58195	5	58195
	f) S. T. Depot setc	-	-	-	-	-	-
	g) Transport Garage	-	-	-	-	-	-
	h) Airport	-	-	-	-	-	-
	i) Jettys	-	-	-	-	-	-
12.	Miscellaneous :						
	a) Municiple office	4	36419	2	9405	6	45824
	b) Govt. Office Enquiry	1	510	-	-	1	510
	Courts, Law Court & Law Court Housing.	1	3526	2	6565	3	10091
	d) Dog Kannel	-	-	-	-	-	-
	e) Cattle Ponds	-	-	-	-	-	-
	f) Dhobo Ghats	2	1775	1	50485	3	52260
	g) Road Depots	-	-	2	2725	2	2725
	h) Octroi Office	-	-	-	-	-	-
	i) P. S. C. s	-	-	2	550	2	550
	j) Cinema / Drama Theatres	6	19806	-	-	6	19806
	k) Public Hall	3	4733	3	5510	6	10243
	l) Municiple Printing Press	-	-	-	-	-	-
	m) Museums	-	-	-	-	-	-
	n) Net drying yards & Finishing activities	-	-	-	-	-	-
	o) Shopping centres	-	-	3	11228	3	11228

Sr. Remarks No.	Amenity	Existing Amenities		Amenities proposed in		Total	
		No.	Area(sq.mts.)	No.	Area (sq.mts.)	No.	Area(sq.mts)
	p) Industrial estates	-	-	-	-	-	-
	q) S.I. Estate	1	5390	5	8050	6	13440
	r) Godowns/Sp1. Godowns	-	-	-	-	-	-
	s) Dharmashala	-	-	-	-	-	-
	t) Warehousing	-	-	-	-	-	-
	u) Municipal Laundry	-	-	-	-	-	-
	v) Govt. Printing Press	-	-	-	-	-	-
	w) Civil Defence	-	-	-	-	-	-
	x) Pedhis/Rehousing of shops.	-	-	-	-	-	-
	xi) Beggars Home	-	-	-	-	-	-
	xii) Children's Home	-	-	-	-	-	-
	xiii) House of corrections (Female)	-	-	-	-	-	-
	xiv) Compost Plant	-	-	-	-	-	-
	xv) Natural Gas Projects	-	-	-	-	-	-
	xvi) Buldozer Godown.	-	-	-	-	-	-

(Note : The areas mentioned above are tentative without prejudice)

WESTERN EXPRESS HIGH WAY

